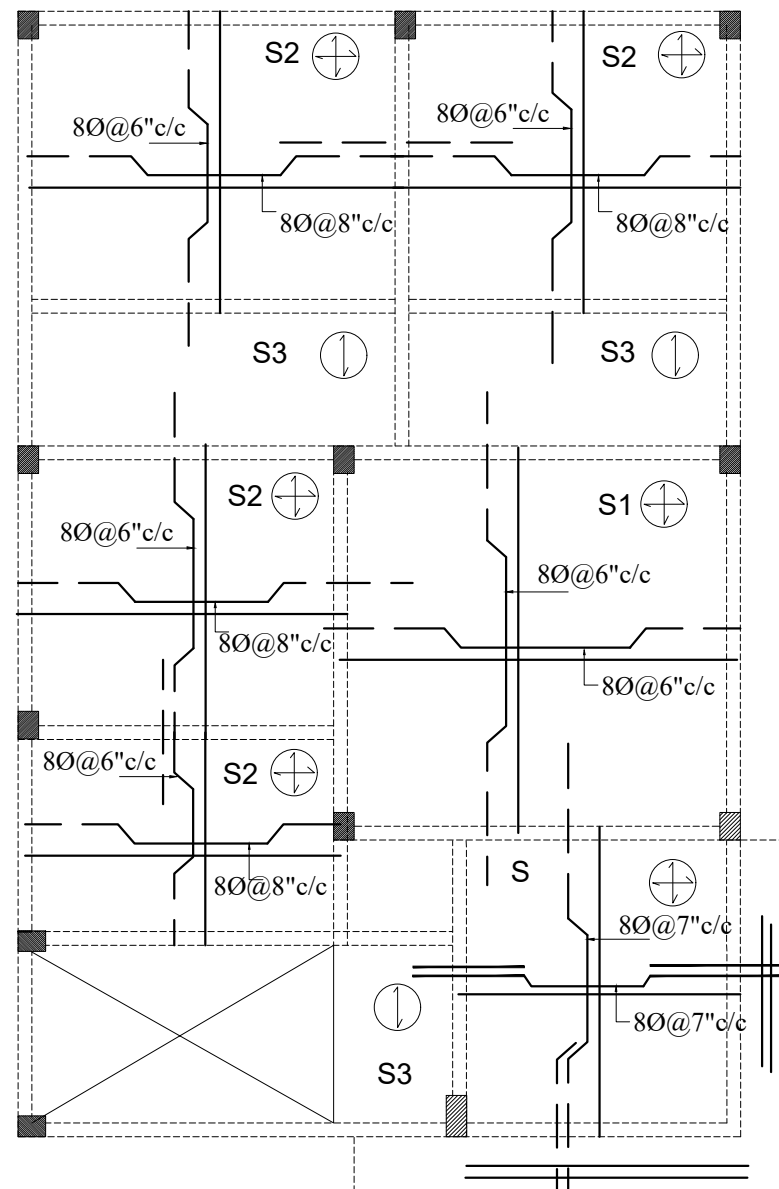


FIRST FLOOR BEAM LAY-OUT (TYPE A-1) DOUBLE



FIRST FLOOR SLAB

SCHEDULE OF SLAB REINFORCEMENT:				EXTRA AT CONTINUOUS EDGE		
TYPE	THICK	SHORTSPAN	LONGSPAN	SHORTSPAN	LONGSPAN	REMARKS
S	4½"	Y8@7"c/c(B) ALT-CRANKED	Y8@7"c/c(B) ALT-CRANKED	Y8@12"c/c(T)	Y8@12"c/c(T)	⊕
S1	4½"	Y8@5"c/c(B) ALT-CRANKED	Y8@6"c/c(B) ALT-CRANKED	Y8@12"c/c(T)	Y8@12"c/c(T)	⊕
S2	4½"	Y8@6"c/c(B) ALT-CRANKED	Y8@8"c/c(B) ALT-CRANKED	Y8@12"c/c(T)	Y8@12"c/c(T)	⊕
S3	4½"	Y8@8"c/c(B) ALT-CRANKED	Y8@10"c/c(B) DIST	Y8@12"c/c(T)	-----	⊖


General Notes :-

1. Use M25 (1:1:2) grade for columns & M20 (1:1.5:3) for footings,slab & Beams
2. Use FE 500 grade tor steel.
3. Provide clear cover of 2" for footings & 1.5" for columns.
4. S.B.C of the Soil is taken as 250kn/m2.
5. Footings are designen for Ground & Upeer 2 floor.
6. Provide clear cover of 1"for beams
7. Read horizontal beams from left to right & vertical from bottom to left.
8. crank +ve bars at L/4 th of span & extend -ve bars L/5 th of span.
9. Do not over lap bottom rods at center and top rods at support.
10. Slab thickness

DESCRIPTION	DATE

GOOD FOR CONSTRUCTIONS



Client	MODI PROPERTIES & INVESTMENTS PVT.LTD
Project	MIRYALGUDA
STRUCTURAL CONSULTANT	 KULKARNI CONSULTANT'S STRUCTURAL ENGINEERS, ARCHITECTS & PROJECT CONSULTANT'S #216, KUBERA TOWER'S, NARAYAN GUDA, HYDERABAD. CONTACT NO'S:- 04023223891, 09246343724, 09246343720.

DATE	15-02-2017	TYPE - A1 (DOUBLE)	
DEALT BY	PAWAN	TITLE:	FIRST FLOOR SLAB DETAILS
DESIGN BY	VIKUAR		
CHECKED & APPROVED:	KULKARNI	DWG. NO.	KC/SD/A1/7
		REV. No.	1