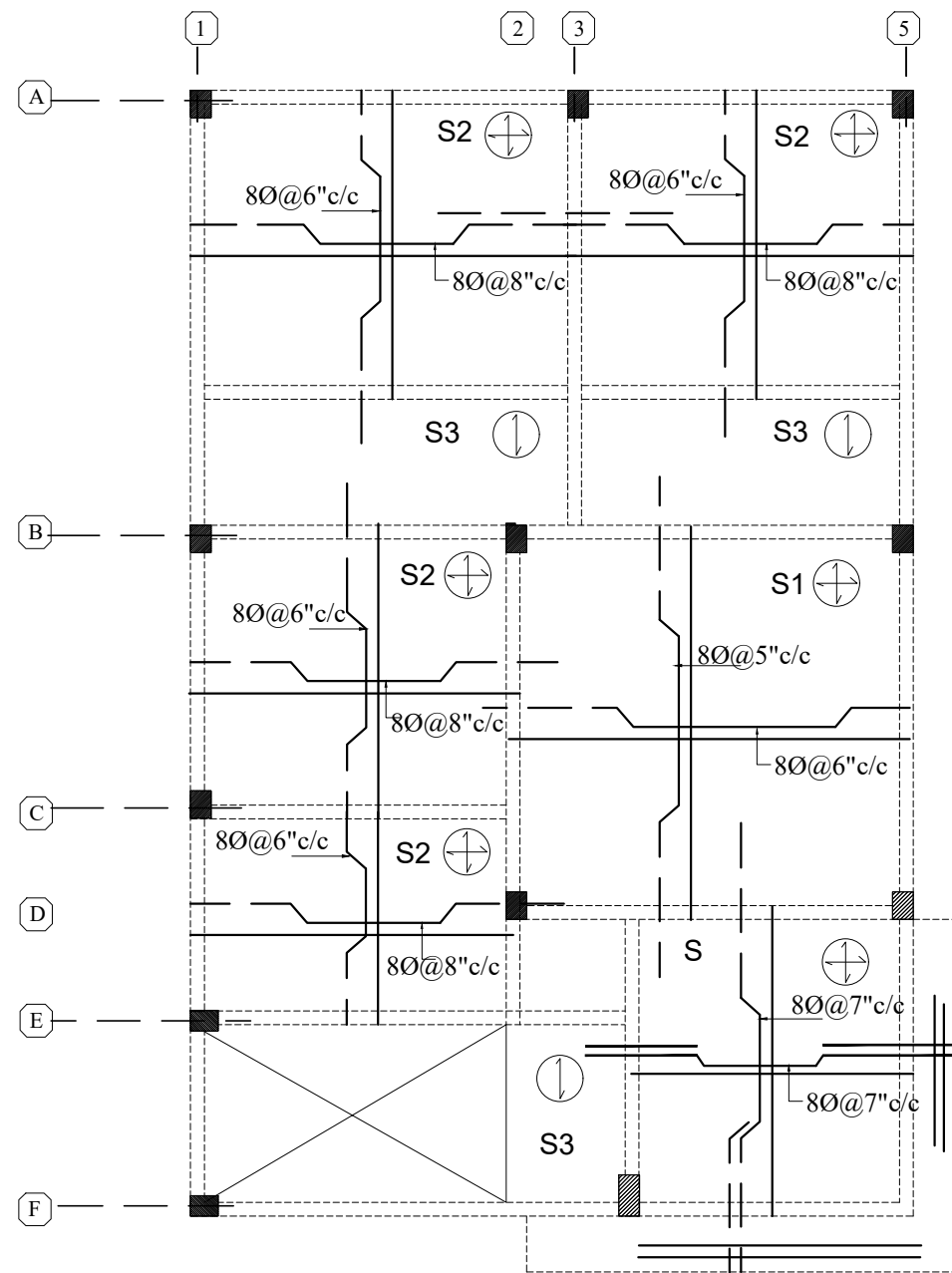


**GROUND FLOOR BEAM LAY-OUT  
(TYPE -A1) DUPLEX**



SCHEDULE OF SLAB REINFORCEMENT:				EXTRA AT CONTINUOUS EDGE		
TYPE	THICK	SHORTSPAN	LONGSPAN	SHORTSPAN	LONGSPAN	REMARKS
SS1	6"	Y12@5"c/c(B) ALT-CRANKED	Y10@4"c/c(B) DIST	Y10@12"c/c(T)	-----	⊕
S1	5"	Y8@5"c/c(B) ALT-CRANKED	Y8@6"c/c(B) ALT-CRANKED	Y8@12"c/c(T)	Y8@16"c/c(T)	⊕
S2	5"	Y8@6"c/c(B) ALT-CRANKED	Y8@8"c/c(B) ALT-CRANKED	Y8@12"c/c(T)	Y8@16"c/c(T)	⊕
S3	5"	Y8@8"c/c(B) ALT-CRANKED	Y8@10"c/c(B) DIST	Y8@12"c/c(T)	-----	⊕
ST1 Stair case	6"	Y10@5"c/c(B) ALT-CRANKED	Y8@10"c/c(B) DIST	Y10@10"c/c(T)	-----	⊕

**General Notes :-**

1. Use M25 (1:1:2) grade for columns & M20 (1:1.5:3) for footings, slab & Beams
2. Use FE 500 grade tor steel.
3. Provide clear cover of 2" for footings & 1.5" for columns.
4. S.B.C of the Soil is taken as 250kn/m<sup>2</sup>.
5. Footings are design for Ground & Upeer 2 floor.
6. Provide clear cover of 1" for beams
7. Read horizontal beams from left to right & vertical from bottom to left.
8. crank +ve bars at L/4 th of span & extend -ve bars L/5 th of span.
9. Do not over lap bottom rods at center and top rods at support.
10. Slab thickness

DESCRIPTION	DATE

GOOD FOR CONSTRUCTIONS

Client	MODI PROPERTIES & INVESTMENTS PVT.LTD
Project	MIRYALGUDA
STRUCTURAL CONSULTANT	<b>KULKARNI CONSULTANT'S</b> STRUCTURAL ENGINEERS, ARCHITECTS & PROJECT CONSULTANT'S #216, KUBERA TOWER'S, NARAYAN GUDA, HYDERABAD. CONTACT NO'S:- 04023223891, 09246343724, 09246343720.

DATE	15-02-2017	TYPE - A1 (DUPLEX)	
DEALT BY	PAWAN	TITLE:	GROUND FLOOR SLAB DETAILS
DESIGN BY	VIKUAR		
CHECKED & APPROVED:	KULKARNI	DWG. NO.	KC/SD/A1/9
		REV. No.	1