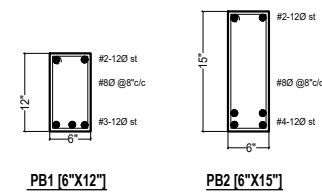
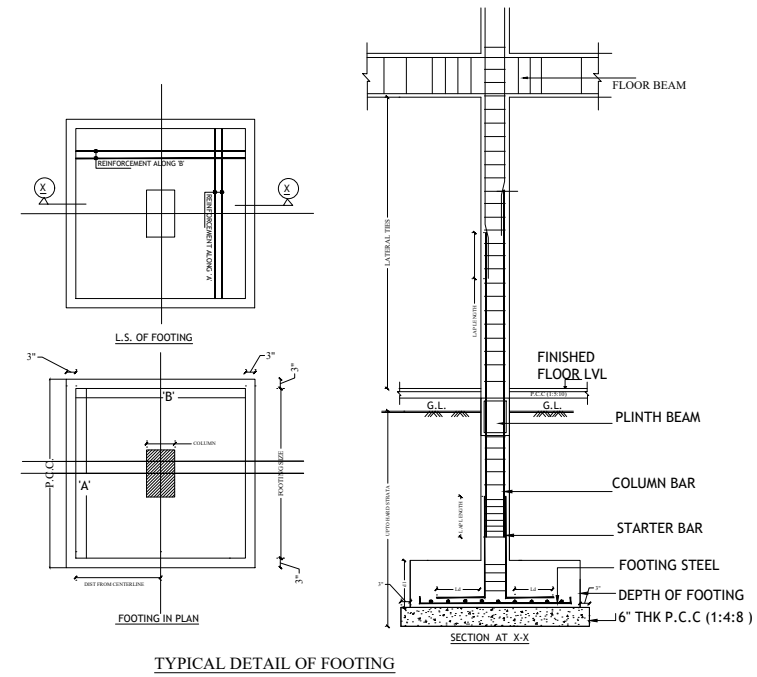


PLINTH BEAM LAY-OUT



PLINTH BEAM DETAILS



TYPICAL DETAIL OF FOOTING

COLUMN SECTION DETAILS						FOOTINGS SECTION DETAILS					
TYPE/ NOs	CONC. GRADE	SIZE	STEEL	SECTION	LATERAL TIES	TYPE/ NOs	CONC. GRADE	PIT SIZE	FOOTING SIZE (A X B)	DEPTH dt	REINFORCEMENT ALONG A&B
C1	M25	9"x12"	4 nos 160 + 2 nos 120		80@8" c/c	F1	M20	4'6"x4'6"	4'0"x4'0"	15"	100@ 6" c/c BOTH WAYS
C2	M25	9"x12"	8 nos 120		80@8" c/c	F2	M20	5'6"x5'6"	5'0"x5'0"	18"	100@ 6" c/c BOTH WAYS
C3	M25	9"x18"	4 nos 200 + 4 nos 160		80@8" c/c						

**General Notes :-**

1. Use M25 (1:1:2) grade for columns & M20 (1:1.5:3) for footings, slab & Beams
2. Use FE500 grade tor steel.
3. Provide clear cover of 2" for footings & 1.5" for columns.
4. S.B.C of the Soil is taken as 350kn/m2.
5. Footings are designed for Ground +2 Floors
6. Provide clear cover of 1" for beams

Note :- Refer architect center line drawing for center line dimensions.

DESCRIPTION	DATE



Client	MODI PROPERTIES & INVESTMENTS PVT.LTD		
Project	MIRYALGUDA - A1 ( SINGLE , DOUBLE & DUPLEX)		
STRUCTURAL CONSULTANT	<b>KULKARNI CONSULTANT'S</b> STRUCTURAL ENGINEERS, ARCHITECTS & PROJECT CONSULTANT'S #216, KUBERA TOWER'S, NARAYAN GUDA, HYDERABAD. CONTACT NO'S:- 9403223891, 99246343724, 99246343720.		
DATE	13-9-2017	MIRYALGUDA TYPE (A1)	
DEALT BY	PAWAN	TITLE:	COLUMN , FOOTINGS & PLINTH BEAM DETAILS
DESIGN BY	VIQHAR		
CHECKED	KULKARNI	DWG. NO.	KC/SD/A1/1
APPROVED		REV. No.	0