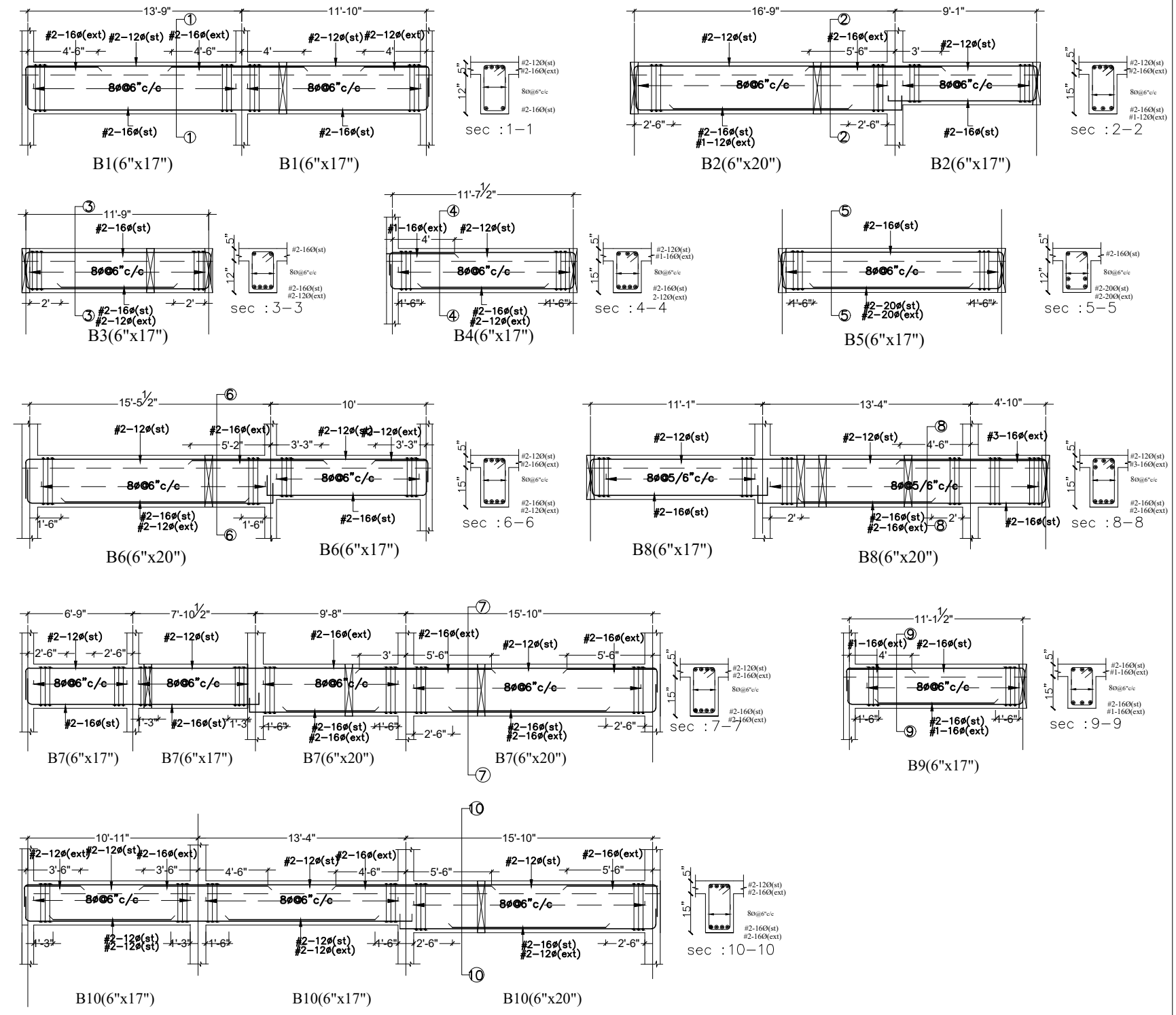


**SCHEDULE OF SLABS**

SLAB MARK	THICKNESS	TYPE	REINFORCEMENT STEEL AT	
			SHORT SPAN	LONG SPAN
S1	5"	↕	8Ø @ 5" C/C	8Ø @ 6" C/C
S2	5"	↕	8Ø @ 6" C/C	8Ø @ 7" C/C
S3	5"	↔	8Ø @ 5" C/C	8Ø @ 8" C/C



- General Notes : --
1. Use M20 (1:1.5:3) for slab & Beams
  2. Use FE 500 grade for steel.
  3. Provide clear cover of 1" for beams  $\frac{3}{4}$ " slab
  4. Read horizontal beam from left to right & vertical beam from bottom to top.
  5. crank +ve bars at L/4 th of span & extend -ve bars L/5 th of span.
  6. Do not over lap bottom rods at center and top rods at support.

DESCRIPTION		DATE
Client	MODI PROPERTIES & INVESTMENTS PVT.LTD	
Project	MIRYALGUDA - A1 3BHK ( VILLA 6&7 )	
STRUCTURAL CONSULTANT	<b>KULKARNI CONSULTANT'S</b> STRUCTURAL ENGINEERS, ARCHITECTS & PROJECT CONSULTANTS #216, KURESA TOWER'S, NARAYAN GUJA, HYDERABAD. CONTACT NO'S:- 9462322891, 99246343724, 99246343720.	
DATE	20-12-2017	MIRYALGUDA TYPE (A1) VILLA 6&7
DEALT BY	PAWAN	TITLE: FIRST FLOOR SLAB & BEAM DETAILS
DESIGN BY	SANTOSH	
CHECKED BY	KULKARNI	
APPROVED		DWG. NO. KC/SD/A1/3
		REV. No. 0