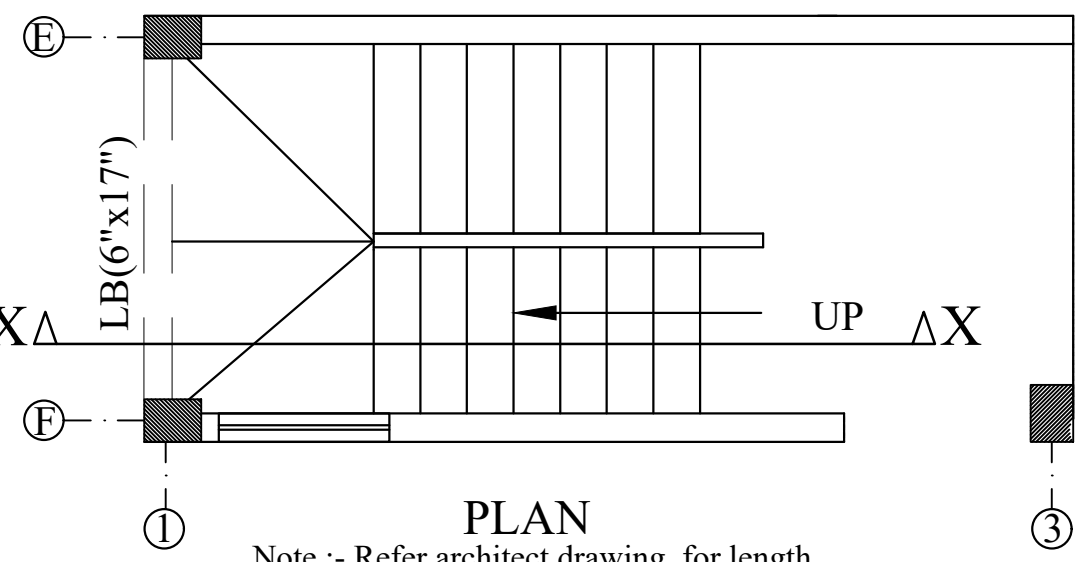
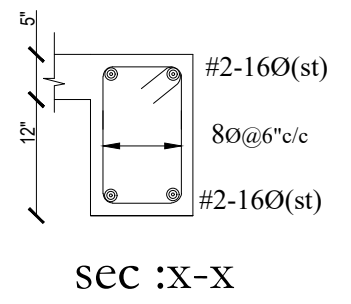
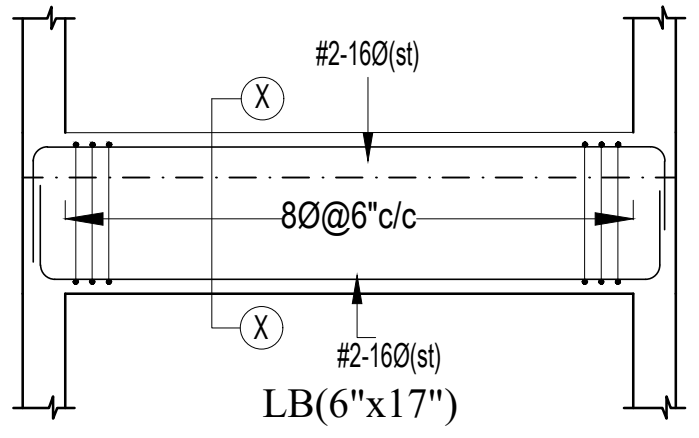


R.C.C SECTION DETAILS 'X-X'





PLAN

Note :- Refer architect drawing for length, width & riser



**General Notes :-**

1. Use M25 (1:1:2) grade for columns & M20 (1:1.5:3) wast slab & Beams
2. Use FE500 grade tor steel.
3. Provide clear cover of 20mm for wast slab & 25mm for landing beam.

DESCRIPTION		DATE
		
Client	MODI PROPERTIES & INVESTMENTS PVT.LTD	
Project	MIRYALGUDA - A1 ( SINGLE & DOUBLE )	
STRUCTURAL CONSULTANT	 <b>KULKARNI CONSULTANT'S</b> STRUCTURAL ENGINEERS, ARCHITECTS & PROJECT CONSULTANT'S #216, KUBERA TOWER'S, NARAYAN GUDA, HYDERABAD. CONTACT NO'S:- 04023223891, 09246343724, 09246343720.	
DATE	05-07-2017	MIRYALGUDA TYPE (A1 SINGLE)
DEALT BY	PAWAN	TITLE: STAIR CASE DETAILS
DESIGN BY	VIQHAR	
CHECKED & APPROVED	KULKARNI	DWG. NO. KC/SD/A1/1
		REV. No. 0