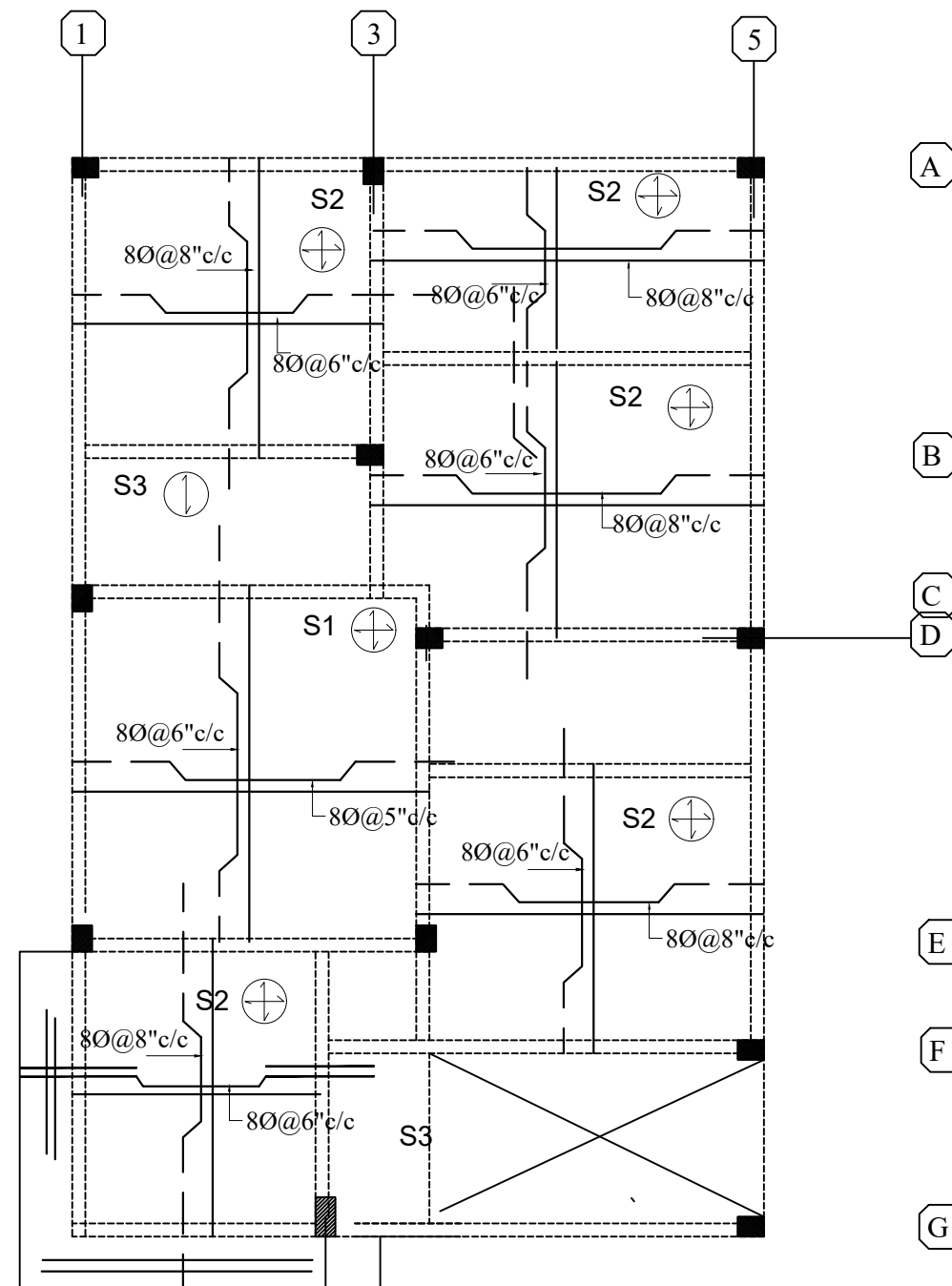


GROUND FLOOR BEAM LAY-OUT
(TYPE -A2) DUPLEX



GROUND FLOOR SLAB

SCHEDULE OF SLAB REINFORCEMENT:

| TYPE | THICK | SHORTSPAN | LONGSPAN | REMARKS |
|------|-------|-----------|----------|---------|
| S1 | 4½" | Y8@5\"/> | | |

General Notes :-

1. Use M25 (1:1:2) grade for columns & M20 (1:1.5:3) for footings, slab & Beams
2. Use FE 500 grade tor steel.
3. Provide clear cover of 2" for footings & 1.5" for columns.
4. S.B.C of the Soil is taken as 250kn/m2.
5. Footings are designen for Ground & Upeer 2 floor.
6. Provide clear cover of 1" for beams
7. Read horizontal beams from left to right & vertical from bottom to left.
8. crank +ve bars at L/4 th of span & extend -ve bars L/5 th of span.
9. Do not over lap bottom rods at center and top rods at support.
10. Slab thickness

| DESCRIPTION | DATE |
|-------------|------|
| | |
| | |
| | |
| | |

GOOD FOR CONSTRUCTIONS

| | |
|-----------------------|--|
| Client | MODI PROPERTIES & INVESTMENTS PVT.LTD |
| Project | MIRYALGUDA |
| STRUCTURAL CONSULTANT | KULKARNI CONSULTANT'S STRUCTURAL ENGINEERS, ARCHITECTS & PROJECT CONSULTANT'S #216, KUBERA TOWER'S, NARAYAN GUDA, HYDERABAD. CONTACT NO'S:- 04023223891, 09246343724, 09246343720. |

| | | | |
|---------------------|------------|--------------------|------------------------------|
| DATE | 12-01-2017 | TYPE - A2 (DUPLEX) | |
| DEALT BY | PAWAN | TITLE: | GROUND FLOOR SLAB DETAILS |
| DESIGN BY | VIQUAR | | |
| CHECKED & APPROVED: | KULKARNI | DWG. NO. | KC/SD/A2/17 |
| | | REV. No. | 1 |