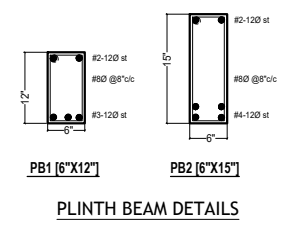


COLUMN SECTION DETAILS					
TYPE/ NOs	CONC. GRADE	SIZE	STEEL	SECTION	LATERAL TIES
C1	M25	9"x12"	4 nos 16Ø + 2 nos 12Ø		80@8"/c
C2	M25	9"x12"	8 nos 12Ø		80@8"/c
C3	M25	9"x18"	4 nos 20Ø + 4 nos 16Ø		80@8"/c

FOOTINGS SECTION DETAILS					
TYPE/ NOs	CONC. GRADE	PIT SIZE	FOOTING SIZE (A X B)	DEPTH at	REINFORCEMENT ALONG A&B
F1	M20	4'6"x4'6"	4'0"x4'0"	15"	10Ø@ 6"/c BOTH WAYS
F2	M20	5'6"x5'6"	5'0"x5'0"	18"	10Ø@ 6"/c BOTH WAYS



- General Notes :-**
1. Use M25 (1:1:2) grade for columns & M20 (1:1.5:3) for footings, slab & Beams
 2. Use FE500 grade tor steel.
 3. Provide clear cover of 2" for footings & 1.5" for columns.
 4. S.B.C of the Soil is taken as 350kn/m2.
 5. Footings are designed for Ground +2 Floors
 6. Provide clear cover of 1" for beams

Note :- Refer architect center line drawing for center line dimensions.

DESCRIPTION		DATE
Client	MODI PROPERTIES & INVESTMENTS PVT.LTD	
Project	MIRYALGUDA - A2 (SINGLE , DOUBLE & DUPLEX)	
STRUCTURAL CONSULTANT	KULKARNI CONSULTANT'S STRUCTURAL ENGINEERS, ARCHITECTS & PROJECT CONSULTANTS #216, KUBERA TOWER'S, NARAYAN GUDA, HYDERABAD. CONTACT NO'S:- 04023223891, 09246343724, 09246343720.	
DATE	13-9-2017	MIRYALGUDA TYPE (A2)
DEALT BY	PAWAN	TITLE: COLUMN , FOOTINGS & PLINTH BEAM DETAILS
DESIGN BY	VIQHAR	DWG. NO. KC/SD/A2/4
CHECKED & APPROVED:	KULKARNI	REV. No. 0