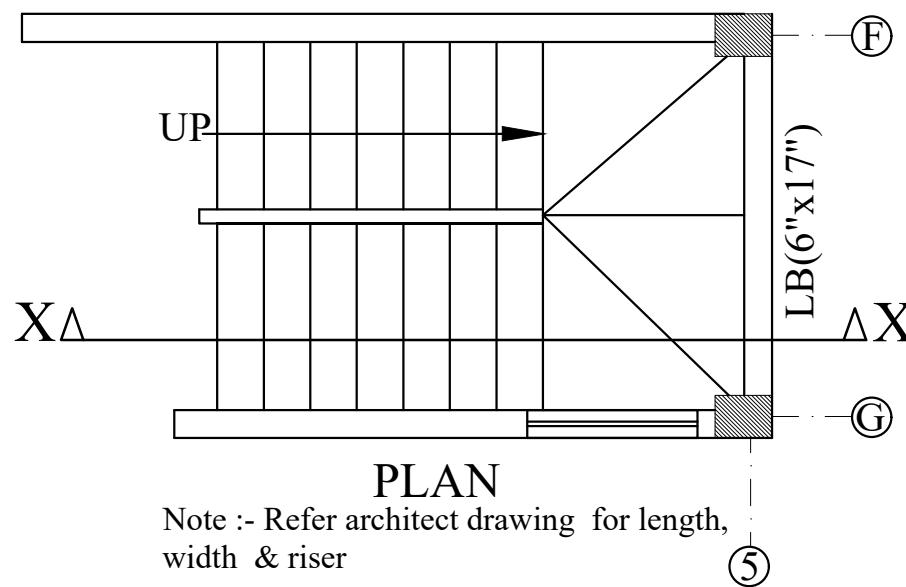
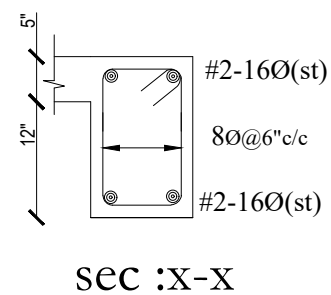
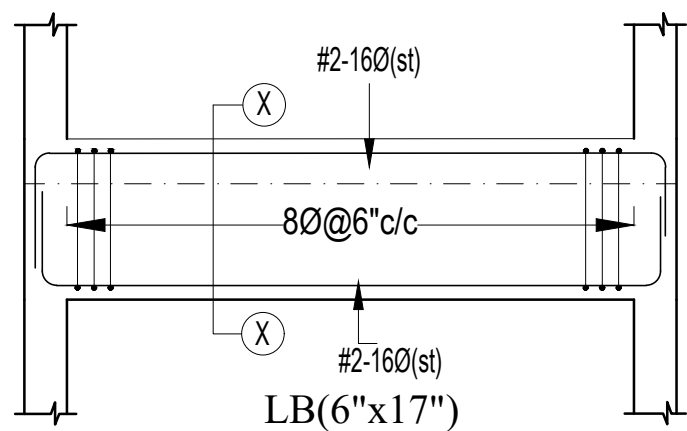


R.C.C SECTION DETAILS 'X-X'



PLAN


Note :- Refer architect drawing for length, width & riser

General Notes :-

1. Use M25 (1:1:2) grade for columns & M20 (1:1.5:3) wast slab & Beams
2. Use FE500 grade tor steel.
3. Provide clear cover of 20mm for wast slab & 25mm for landing beam.

DESCRIPTION	DATE



Client	MODI PROPERTIES & INVESTMENTS PVT.LTD		
Project	MIRYALGUDA - A2 (SINGLE & DOUBLE)		
STRUCTURAL CONSULTANT	 KULKARNI CONSULTANT'S STRUCTURAL ENGINEERS, ARCHITECTS & PROJECT CONSULTANT'S #216, KUBERA TOWER'S, NARAYAN GUDA, HYDERABAD. CONTACT NO'S:- 04023223891, 09246343724, 09246343720.		
DATE	05-07-2017	MIRYALGUDA TYPE (A2 SINGLE)	
DEALT BY	PAWAN	TITLE:	STAIR CASE DETAILS
DESIGN BY	VIQHAR	DWG. NO.	KC/SD/A1/1
CHECKED & APPROVED:	KULKARNI	REV. No.	0