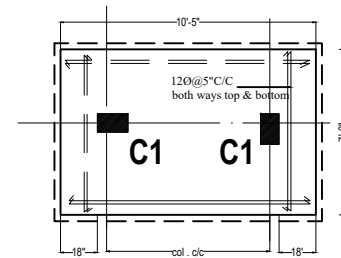
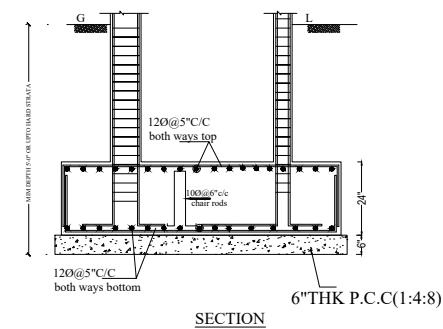
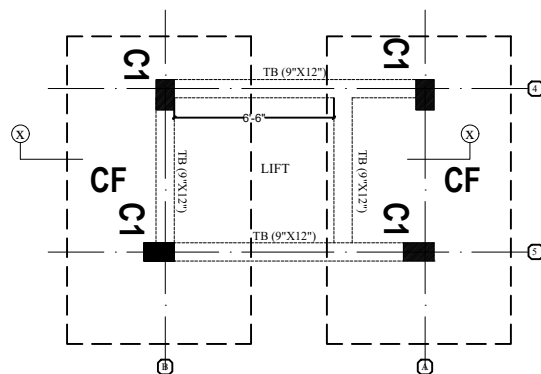
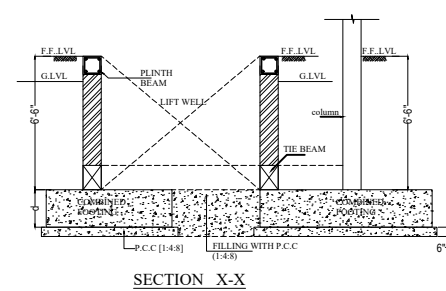
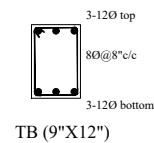
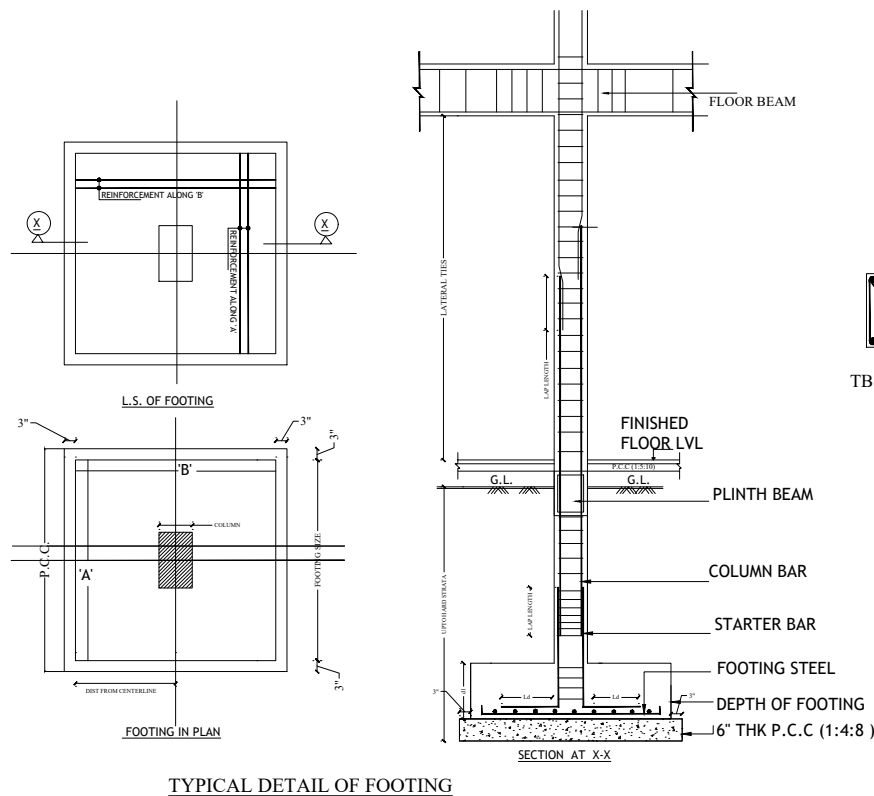


COLUMN SECTION DETAILS					
TYPE/ NOs	CONC. GRADE	SIZE	STEEL	SECTION	LATERAL TIES
C1	M25	9"x15"	6 nos 16Ø		80@8"c/c
C2	M25	9"x18"	4nos 20Ø+ 4nos 16Ø		80@8"c/c
C3	M25	9"x24"	4nos 20Ø+ 6nos 16Ø		80@8"c/c
C4	M25	15"x24"	8nos 25Ø 2nos 20Ø		4-leg stir. 80@8"c/c

FOOTINGS SECTION DETAILS					
TYPE/ NOs	CONC. GRADE	PIT SIZE	FOOTING SIZE (A X B)	DEPTH	REINFORCEMENT ALONG A&B
				d1	
F1	M20	5'6"x5'6"	5'0"x5'0"	15"	10Ø@6"c/c BOTH WAYS
F2	M20	7'6"x7'6"	7'0"x7'0"	18"	10Ø@5"c/c BOTH WAYS
F3	M20	10'0"x10'0"	9'6"x9'6"	24"	12Ø@5"c/c BOTH WAYS
F4	M20	11'6"x11'6"	11'0"x11'0"	30"	16Ø@6"c/c BOTH WAYS



**General Notes :-**

1. Use M25 (1:1:2) grade for columns & M20 (1:1.5:3) for footings, slab & Beams
2. Use FE500 grade for steel.
3. Provide clear cover of 2" for footings & 1.5" for columns.
4. S.B.C of the Soil is taken as 200kn/m2.
5. Footings are designed for Ground +4 Floors
6. Provide clear cover of 1" for beams

Note :- Refer architect center line drawing for center line dimensions.

DESCRIPTION	DATE



Client	MODI PROPERTIES & INVESTMENTS PVT.LTD
Project	MIRYALGUDA - (CLUB HOUSE)
STRUCTURAL CONSULTANT	<b>KULKARNI CONSULTANT'S</b> STRUCTURAL ENGINEERS, ARCHITECTS & PROJECT CONSULTANT'S #216, KUBERA TOWER'S, NARAYAN GUDA, HYDERABAD. CONTACT NO'S:- 04023223891, 09246343724, 09246343720.

DATE	28-7-2017	MIRYALGUDA (CLUB HOUSE)	
DEALT BY	PAWAN	TITLE:	COLUMN , FOOTINGS & DETAILS
DESIGN BY	SANTOSH		
CHECKED & APPROVED:	KULKARNI	DWG. NO.	KC/SD/M/CH/1
		REV. No.	0