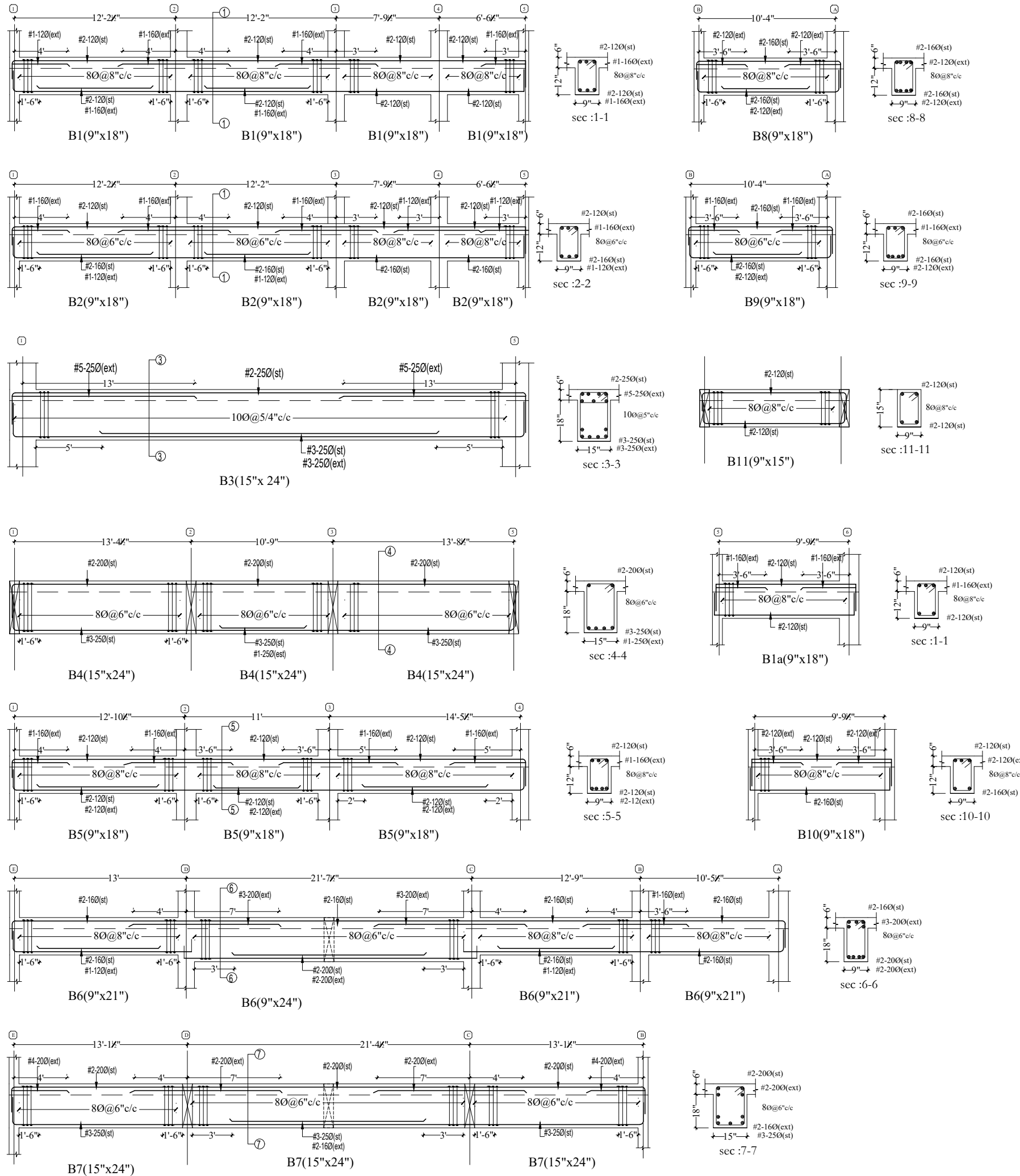



General Notes :-

1. Use M20 (1:1.5:3) for slab & Beams
2. Use FE 500 grade tor steel.
3. Provide clear cover of 1" for beams & $\frac{3}{4}$ " slab
4. Read horizontal beam from left to right & vertical beam from bottom to top.
5. crank +ve bars at L/4 th of span & extend -ve bars L/5 th of span.
6. Do not over lap bottom rods at center and top rods at support.



DESCRIPTION		DATE
Client	MODI PROPERTIES & INVESTMENTS PVT.LTD	
Project	MIRYALGUDA - (CLUB HOUSE)	
STRUCTURAL CONSULTANT	 KULKARNI CONSULTANT'S STRUCTURAL ENGINEERS, ARCHITECTS & PROJECT CONSULTANT'S #216, KUBERA TOWER'S, NARAYAN GUDA, HYDERABAD. CONTACT NO'S:- 04023223891, 09246343724, 09246343720.	
DATE	14-8-2017	MIRYALGUDA (CLUB HOUSE) TITLE: GROUND & TYPICAL FLOOR BEAM SECTION DETAILS
DEALT BY	PAWAN	
DESIGN BY	SANTOSH	
CHECKED & APPROVED:	KULKARNI	
DWG. NO.	KC/SD/M/CH/4	REV. No.
		0

