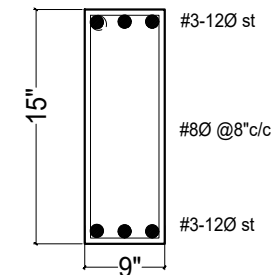
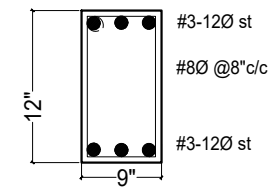


PB1 [9"X15"]



PB2 [9"X15"]



PB3 [9"X12"]

PLINTH BEAM DETAILS

General Notes :-

1. Use M25 (1:1:2) grade for columns & M20 (1:1.5:3) for footings, slab & Beams
2. Use FE500 grade tor steel.
3. Provide clear cover of 2" for footings & 1.5" for columns.
4. S.B.C of the Soil is taken as 200kn/m².
5. Footings are designed for Ground +4 Floors
6. Provide clear cover of 1" for beams

Note :- Refer architect center line drawing for center line dimensions.

DESCRIPTION	DATE



Client: **MODI PROPERTIES & INVESTMENTS PVT.LTD**

Project: **MIRYALGUDA - (CLUB HOUSE)**

STRUCTURAL CONSULTANT: **KULKARNI CONSULTANT'S**
 STRUCTURAL ENGINEERS, ARCHITECTS & PROJECT CONSULTANT'S
 # 216, KUBERA TOWER'S, NARAYAN GUDA, HYDERABAD.
 CONTACT NO'S:- 04023223891, 09246343724, 09246343720.

DATE	13-6-2017	MIRYALGUDA (CLUB HOUSE)	
DEALT BY	PAWAN	TITLE:	PLINTH BEAM DETAILS
DESIGN BY	SANTOSH		
CHECKED & APPROVED:	KULKARNI	DWG. NO.	KC/SD/M/CH/2
		REV. No.	0