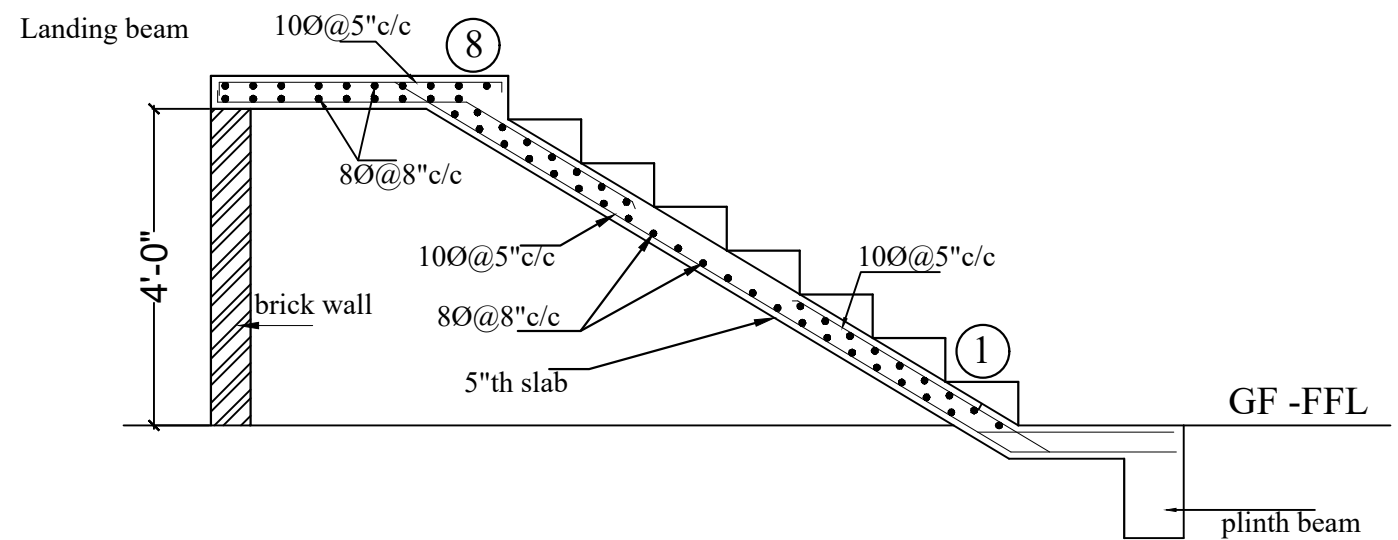
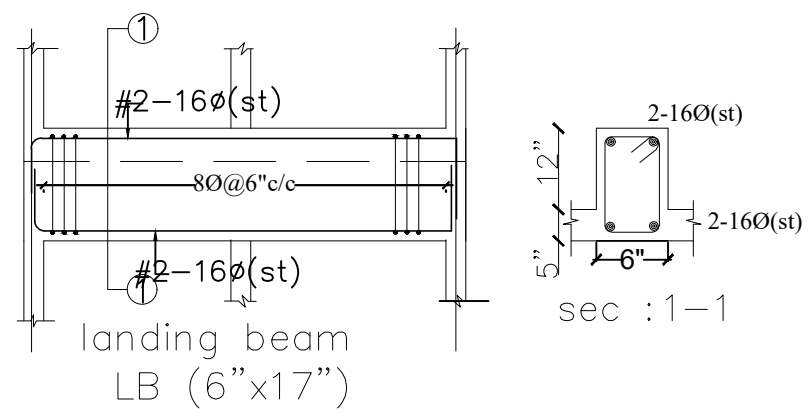


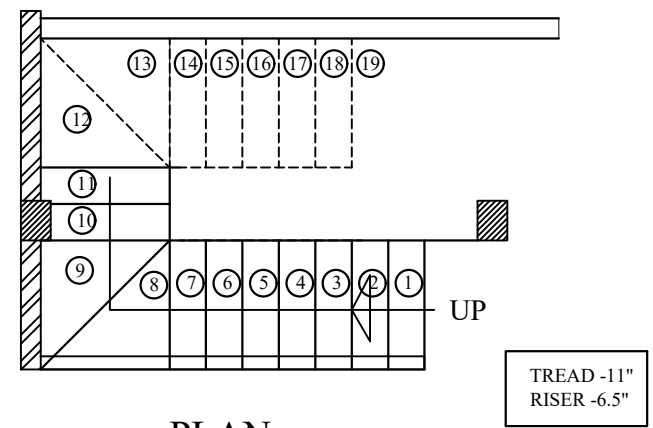
2 nd FLIGHT R.C.C SECTION DETAILS



R.C.C SECTION DETAILS

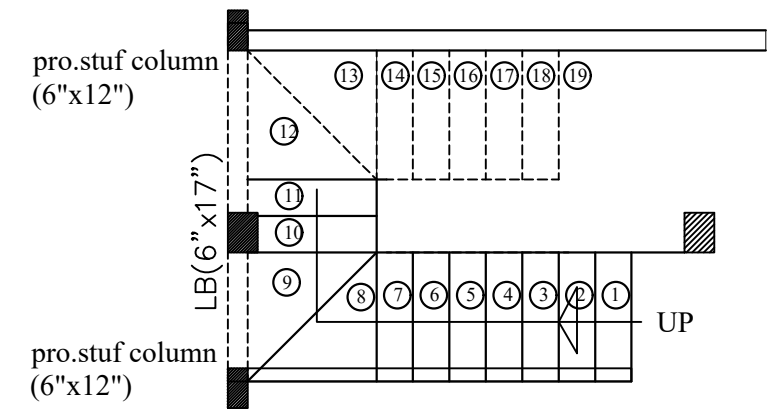


landing beam LB (6"x17")



PLAN
GROUND FLOOR PLAN

TREAD -11"
RISER -6.5"

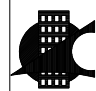


FIRST FLOOR PLAN

- General Notes : --
1. Use M20 (1:1.5:3) for slab & Beams
 2. Use FE 500 grade tor steel.
 3. Provide clear cover of 1" for beams $\frac{3}{4}$ " slab
 4. Read horizontal beam from left to right & vertical beam from bottom to top.
 5. crank +ve bars at L/4 th of span & extend -ve bars L/5 th of span.
 6. Do not over lap bottom rods at center and top rods at support.

PRODUCED BY AN AUTODESK STUDENT VERSION

PRODUCED BY AN AUTODESK STUDENT VERSION

DESCRIPTION		DATE
Client	MODI PROPERTIES & INVESTMENTS PVT.LTD	
Project	MIRYALGUDA - A1 3BHK (VILLA 6&7)	
STRUCTURAL CONSULTANT	 KULKARNI CONSULTANT'S STRUCTURAL ENGINEERS, ARCHITECTS & PROJECT CONSULTANT'S # 216, KUBERA TOWER'S, NARAYAN GUDA, HYDERABAD. CONTACT NO'S:- 04023223891, 09246343724, 09246343720.	
DATE	2-01-2018	MIRYALGUDA TYPE (A1) VILLA 6&7
DEALT BY	PAWAN	TITLE: STAIRCASE R.C.C DETAILS
DESIGN BY	SANTOSH	
CHECKED & APPROVED :	KULKARNI	DWG. NO. KC/SD/A1/4
		REV. No. 0