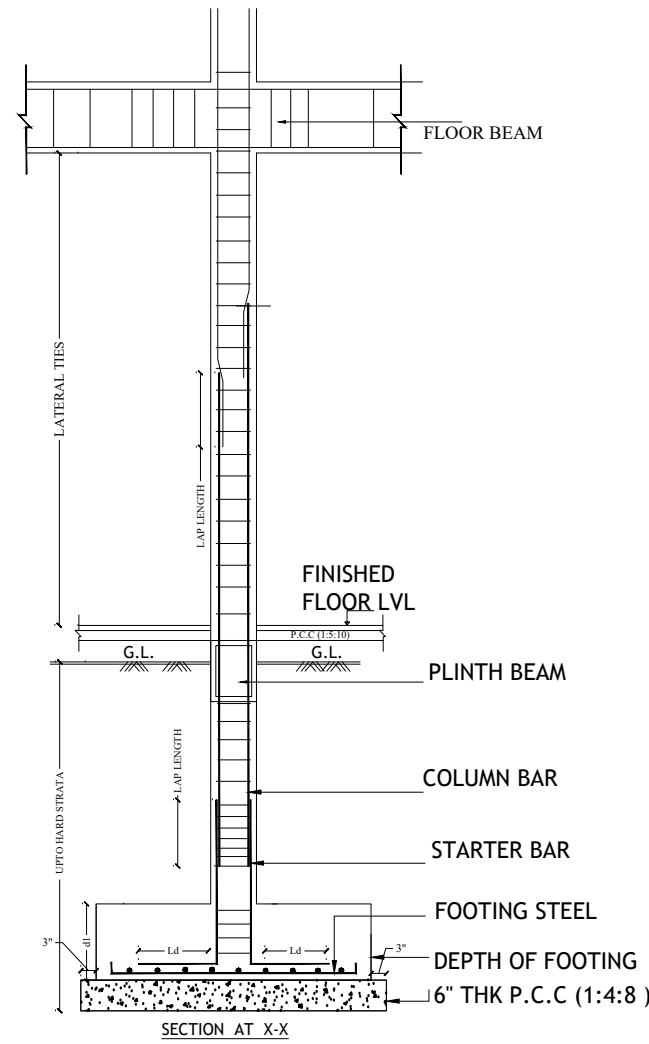
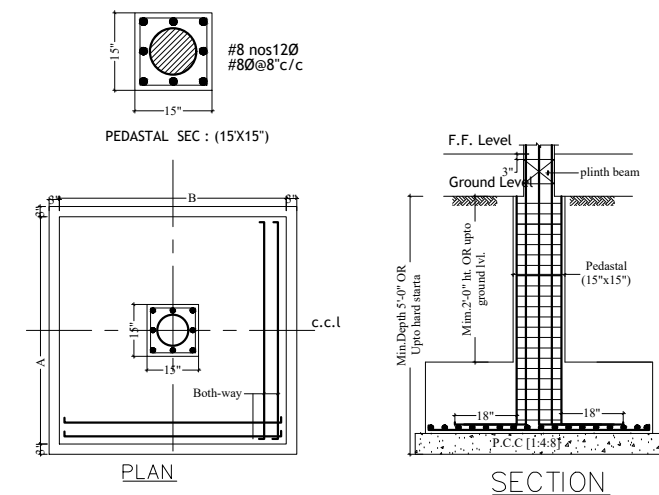


TYPICAL DETAIL OF FOOTING



COLUMN SECTION DETAILS						FOOTINGS SECTION DETAILS					
TYPE/ Nos	CONC. GRADE	SIZE	STEEL	SECTION	LATERAL TIES	TYPE/ Nos	CONC. GRADE	PIT SIZE	FOOTING SIZE (A X B)	DEPTHS d1	REINFORCEMENT ALONG A&B
C1	M25	9"x12"	4 nos16Ø + 2 nos12Ø		 8Ø@8" c/c	F1	M20	4'6"x4'6"	4'0"x4'0"	15"	10Ø@ 6"c/c BOTH WAYS
C2	M25	9"x12"	8 nos12Ø		 8Ø@8" c/c	F2	M20	5'6"x5'6"	5'0"x5'0"	18"	10Ø@ 6"c/c BOTH WAYS
C3	M25	9"x18"	4nos20Ø + 4 nos16Ø		 8Ø@8" c/c	F3	M20	4'6"x5'6"	4'0"x5'0"	18"	10Ø@ 6"c/c BOTH WAYS
C3	M25	9" dia 15" X15" (Pedastal)	8 nos12Ø		 8Ø@8" c/c						



CIRCULAR COLUMN FOOTING DETAILS

General Notes :--

1. Use M25 (1:1:2) grade for columns & M20 (1:1.5:3) for footings, slab & Beams
2. Use FE500 grade tor steel.
3. Provide clear cover of 2" for footings & 1.5" for columns.
4. S.B.C of the Soil is taken as 350kn/m2.
5. Footings are designed for Ground +2 Floors
6. Provide clear cover of 1" for beams

Note :- Refer architect center line drawing for center line dimensions.

DESCRIPTION		DATE
Client	MODI PROPERTIES & INVESTMENTS PVT.LTD	
Project	MIRYALGUDA - A1 3BHK ( VILLA 6&7 )	
STRUCTURAL CONSULTANT	<b>KULKARNI CONSULTANT'S</b> STRUCTURAL ENGINEERS, ARCHITECTS & PROJECT CONSULTANT'S #216, KUBERA TOWER'S, NARAYAN GUDA, HYDERABAD. CONTACT NO'S:- 04023223891, 09246343724, 09246343720.	
DATE	1-12-2017	MIRYALGUDA TYPE (A1 ) VILLA 6&7
DEALT BY	PAWAN	TITLE: COLUMN , FOOTINGS & DETAILS
DESIGN BY	SANTOSH	
CHECKED & APPROVED:	KULKARNI	DWG. NO. KC/SD/A1/1
		REV. No. 0