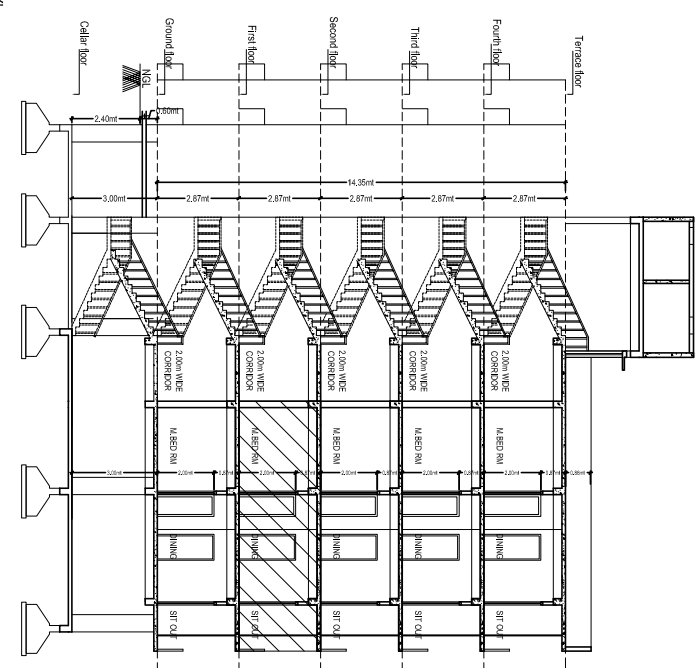




TYPICAL FLOOR PLAN (1ST, 2ND, 3RD & 4TH FLOORS)

GROUND FLOOR PLAN
BLOCK - B, F, G, H & I



SECTION AT 'Y-Y'

Office Use

REL. HUM.	COND.	TA.	WB.
FORM NO.	DATE		

- Conditions:
1. The structure is intended for use as an office building.
 2. The structure is intended for use as an office building.
 3. The structure is intended for use as an office building.
 4. The structure is intended for use as an office building.
 5. The structure is intended for use as an office building.
 6. The structure is intended for use as an office building.
 7. The structure is intended for use as an office building.
 8. The structure is intended for use as an office building.
 9. The structure is intended for use as an office building.
 10. The structure is intended for use as an office building.

11. The structure is intended for use as an office building.
12. The structure is intended for use as an office building.
13. The structure is intended for use as an office building.
14. The structure is intended for use as an office building.
15. The structure is intended for use as an office building.
16. The structure is intended for use as an office building.
17. The structure is intended for use as an office building.
18. The structure is intended for use as an office building.
19. The structure is intended for use as an office building.
20. The structure is intended for use as an office building.
21. The structure is intended for use as an office building.
22. The structure is intended for use as an office building.
23. The structure is intended for use as an office building.
24. The structure is intended for use as an office building.
25. The structure is intended for use as an office building.
26. The structure is intended for use as an office building.
27. The structure is intended for use as an office building.
28. The structure is intended for use as an office building.
29. The structure is intended for use as an office building.
30. The structure is intended for use as an office building.

Office Use

REL. HUM.	COND.	TA.	WB.
FORM NO.	DATE		

Office Use

REL. HUM.	COND.	TA.	WB.
FORM NO.	DATE		

PROPOSED GROUP HOUSING SCHEME IN SURVEY NOS. 193, 194 & 195 SITUATED AT KAPPA VILLAGE, CHINIKAPPA CIRCLE, BELONGING TO: ..

M/s. VISTA HOMES REPRESENTED BY MR. SOHAM MODI

Specification :-

1. FOUNDATION	GR. S. CONC.
2. BEARING WALLS	GR. S. CONC.
3. FLOORING FOR S.B	GR. S. CONC.
4. BEAMS FOR INTER-S	R.C.C. 124
5. JOINERY	C.T. WOOD
6. SUPER STUR	BRICK IN CM
7. PLASTERING	IN CM
8. FLOORINGS	MARBLE
9. DOORS & WINDOWS	WOOD
10. WINDOW S	C.T. WOOD

DOORS :-

MD - 1 (4.00x2.00M)	FD 1 - 1.20x2.00M
DI - 1 (0.90x2.00M)	DZ - 0.75x2.00M
DZ - 0.75x2.00M	FD - 2 (1.42x2.00M)

OPENINGS :-

MD - 1 (4.00x2.00M)	WD - 1 (2.00x2.00M)
DI - 1 (0.90x2.00M)	DI - 2 (0.75x2.00M)
DZ - 0.75x2.00M	WD - 2 (1.42x2.00M)

REFERENCE :-

PROPOSED :-

EXISTING :-

OSMANTELE :-

MORTGAGE AGEN :-

SCALE :- 1:100

AREA STATEMENT FOR GROUND & TYPICAL FLOORS :-

S.NO.	FLOOR	AREA (SQ.M)	TOTAL
1	GROUND FLOOR	112.26	112.26
2	1ST FLOOR	112.26	224.52
3	2ND FLOOR	112.26	336.78
4	3RD FLOOR	112.26	449.04
5	4TH FLOOR	112.26	561.30
6	5TH FLOOR	112.26	673.56
7	6TH FLOOR	112.26	785.82
8	7TH FLOOR	112.26	898.08
9	8TH FLOOR	112.26	1010.34
10	9TH FLOOR	112.26	1122.60
11	10TH FLOOR	112.26	1234.86
12	11TH FLOOR	112.26	1347.12
13	12TH FLOOR	112.26	1459.38
14	13TH FLOOR	112.26	1571.64
15	14TH FLOOR	112.26	1683.90
16	15TH FLOOR	112.26	1796.16
17	16TH FLOOR	112.26	1908.42
18	17TH FLOOR	112.26	2020.68
19	18TH FLOOR	112.26	2132.94
20	19TH FLOOR	112.26	2245.20
21	20TH FLOOR	112.26	2357.46
22	21TH FLOOR	112.26	2469.72
23	22TH FLOOR	112.26	2581.98
24	23TH FLOOR	112.26	2694.24
25	24TH FLOOR	112.26	2806.50
26	25TH FLOOR	112.26	2918.76
27	26TH FLOOR	112.26	3031.02
28	27TH FLOOR	112.26	3143.28
29	28TH FLOOR	112.26	3255.54
30	29TH FLOOR	112.26	3367.80
31	30TH FLOOR	112.26	3480.06
32	31TH FLOOR	112.26	3592.32
33	32TH FLOOR	112.26	3704.58
34	33TH FLOOR	112.26	3816.84
35	34TH FLOOR	112.26	3929.10
36	35TH FLOOR	112.26	4041.36
37	36TH FLOOR	112.26	4153.62
38	37TH FLOOR	112.26	4265.88
39	38TH FLOOR	112.26	4378.14
40	39TH FLOOR	112.26	4490.40
41	40TH FLOOR	112.26	4602.66
42	41TH FLOOR	112.26	4714.92
43	42TH FLOOR	112.26	4827.18
44	43TH FLOOR	112.26	4939.44
45	44TH FLOOR	112.26	5051.70
46	45TH FLOOR	112.26	5163.96
47	46TH FLOOR	112.26	5276.22
48	47TH FLOOR	112.26	5388.48
49	48TH FLOOR	112.26	5500.74
50	49TH FLOOR	112.26	5613.00
51	50TH FLOOR	112.26	5725.26
52	51TH FLOOR	112.26	5837.52
53	52TH FLOOR	112.26	5949.78
54	53TH FLOOR	112.26	6062.04
55	54TH FLOOR	112.26	6174.30
56	55TH FLOOR	112.26	6286.56
57	56TH FLOOR	112.26	6398.82
58	57TH FLOOR	112.26	6511.08
59	58TH FLOOR	112.26	6623.34
60	59TH FLOOR	112.26	6735.60
61	60TH FLOOR	112.26	6847.86
62	61TH FLOOR	112.26	6960.12
63	62TH FLOOR	112.26	7072.38
64	63TH FLOOR	112.26	7184.64
65	64TH FLOOR	112.26	7296.90
66	65TH FLOOR	112.26	7409.16
67	66TH FLOOR	112.26	7521.42
68	67TH FLOOR	112.26	7633.68
69	68TH FLOOR	112.26	7745.94
70	69TH FLOOR	112.26	7858.20
71	70TH FLOOR	112.26	7970.46
72	71TH FLOOR	112.26	8082.72
73	72TH FLOOR	112.26	8194.98
74	73TH FLOOR	112.26	8307.24
75	74TH FLOOR	112.26	8419.50
76	75TH FLOOR	112.26	8531.76
77	76TH FLOOR	112.26	8644.02
78	77TH FLOOR	112.26	8756.28
79	78TH FLOOR	112.26	8868.54
80	79TH FLOOR	112.26	8980.80
81	80TH FLOOR	112.26	9093.06
82	81TH FLOOR	112.26	9205.32
83	82TH FLOOR	112.26	9317.58
84	83TH FLOOR	112.26	9429.84
85	84TH FLOOR	112.26	9542.10
86	85TH FLOOR	112.26	9654.36
87	86TH FLOOR	112.26	9766.62
88	87TH FLOOR	112.26	9878.88
89	88TH FLOOR	112.26	9991.14
90	89TH FLOOR	112.26	10103.40
91	90TH FLOOR	112.26	10215.66
92	91TH FLOOR	112.26	10327.92
93	92TH FLOOR	112.26	10440.18
94	93TH FLOOR	112.26	10552.44
95	94TH FLOOR	112.26	10664.70
96	95TH FLOOR	112.26	10776.96
97	96TH FLOOR	112.26	10889.22
98	97TH FLOOR	112.26	11001.48
99	98TH FLOOR	112.26	11113.74
100	99TH FLOOR	112.26	11226.00

OWNERS SIGN :-

BUILDERS SIGN (REGD NO) :-

ARCHITECT'S SIGN (REGD NO) :-

STRUCTURAL ENGG SIGN (REGD NO) :-