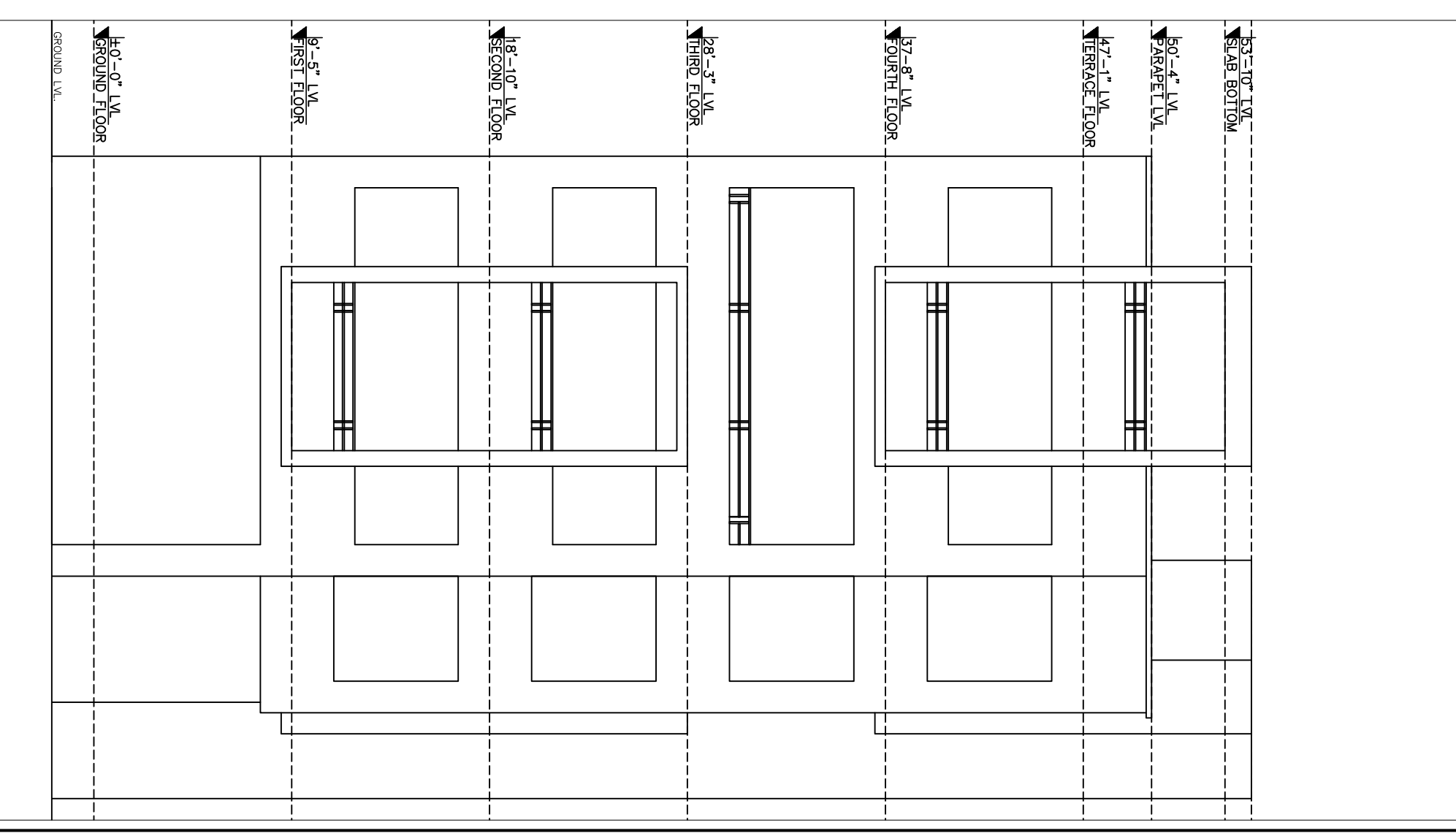
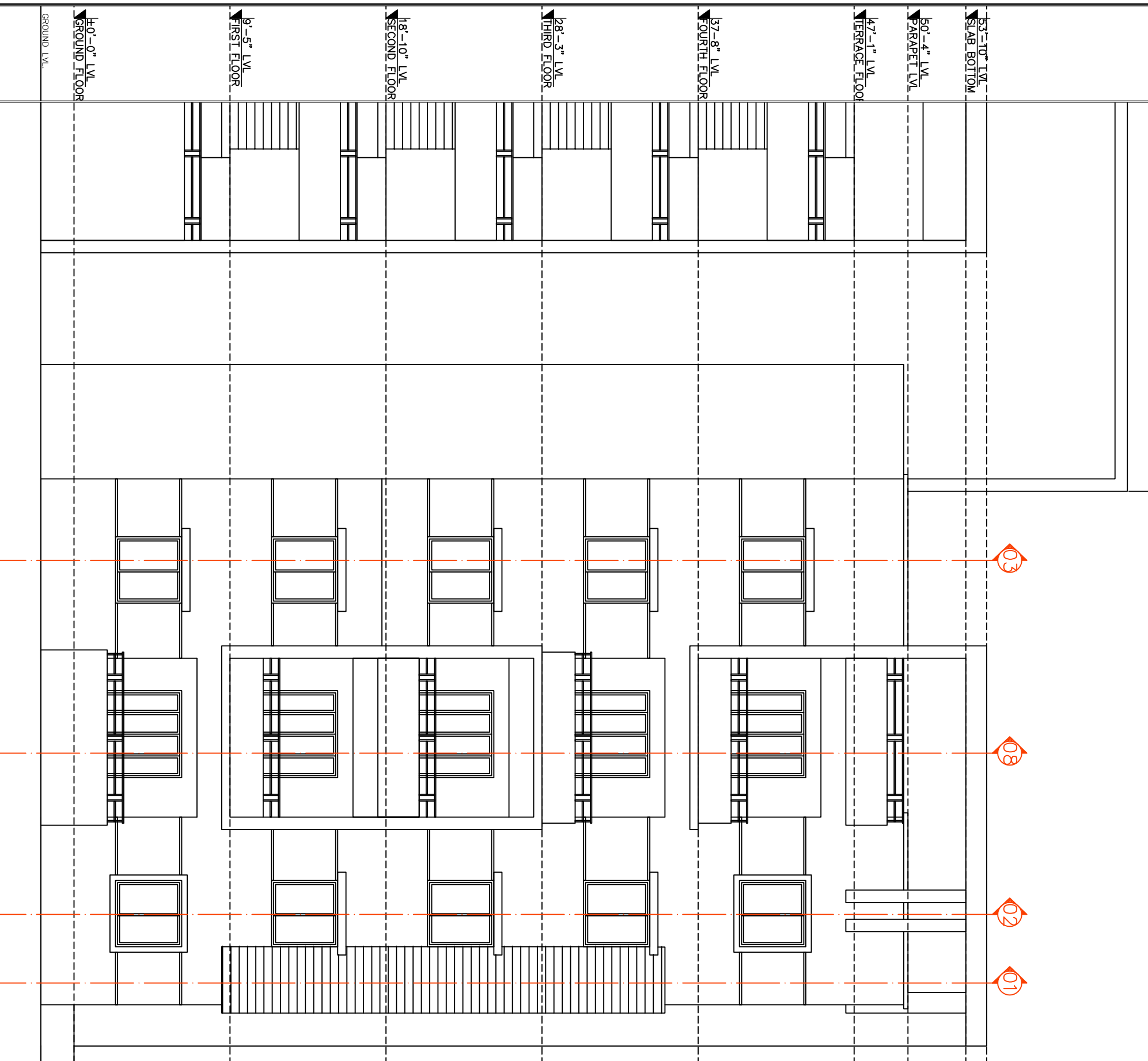


40'-5 1/2"



WEST SIDE ELEVATION - E2

WEST SIDE ELEVATION - E4

<p>Owners & Developers: 5-4-187 /3&4 SOHAM MANSION II FLOOR M.G. ROAD, SECUNDERABAD-500003. PHONE: 66335551(4LINES) FAX: 040-27544058 E-MAIL: INFO @MODIPROPERTIES.COM</p>		<p>R.No: DATE REVISION</p>	
<p>NOTE:- 1. ALL THE DIMENSIONS ARE IN FPS SYSTEM UNLESS NOT MENTIONED OTHERWISE. 2. THIS SHEET SUPERSEDES ALL THE PREVIOUS REVISED ARCHITECTURAL DRAWINGS OF SAME NUMBERS. 3. ALL LARGE SCALE DRAWINGS SHALL SUPERSEDE THE SMALL SCALE ONES. 4. ANY DISCREPANCY IN THE DRAWINGS SHALL BE BROUGHT TO THE NOTICE OF THE CONSULTANT BEFORE EXECUTION OF WORK.</p>		<p>SCALE: N.T.S. DATE: 19-03-2013 DRAWN: G. MOTIRAM CHECKED & APPROVED: KULKARNI</p>	
<p>VISTA HOMES BLOCK FOR REFERENCE ONLY</p>		<p>DATE: 19-03-2013 DRAWN: G. MOTIRAM CHECKED & APPROVED: KULKARNI</p>	
<p>TH: WEST SIDE ELEVATION [E 02&04] DWG. NO. KC/VH/AD/C/ELE/E 02</p>		<p>REV. NO. 00</p>	
<p>Architects & Engineers KULKARNI CONSULTANTS STRUCTURAL ENGINEERS, ARCHITECTS & PROJECT CONSULTANTS #216, KUBBRA TOWERS, NARAYAN GUDA, HYDERABAD.</p>		<p>Architects & Engineers KULKARNI CONSULTANTS STRUCTURAL ENGINEERS, ARCHITECTS & PROJECT CONSULTANTS #216, KUBBRA TOWERS, NARAYAN GUDA, HYDERABAD.</p>	