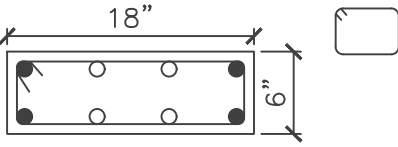
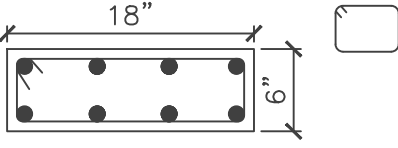
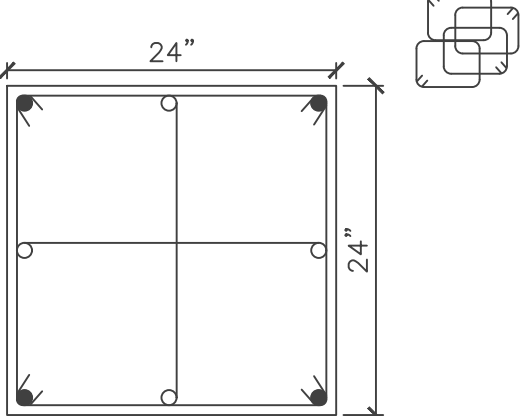
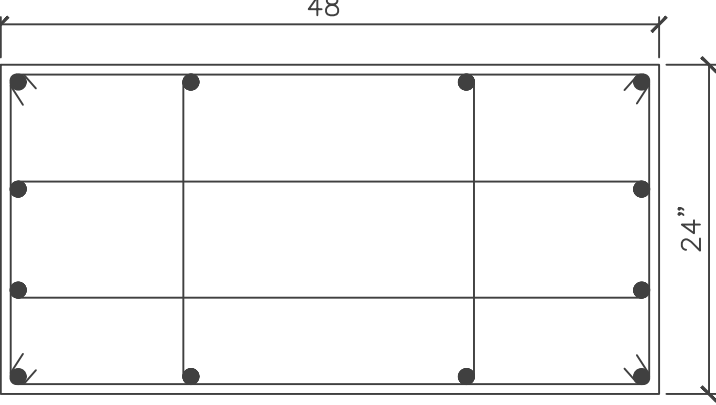
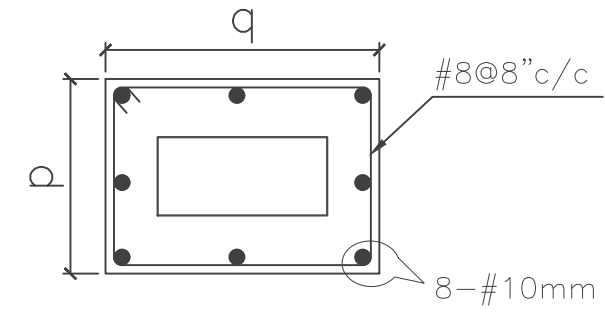
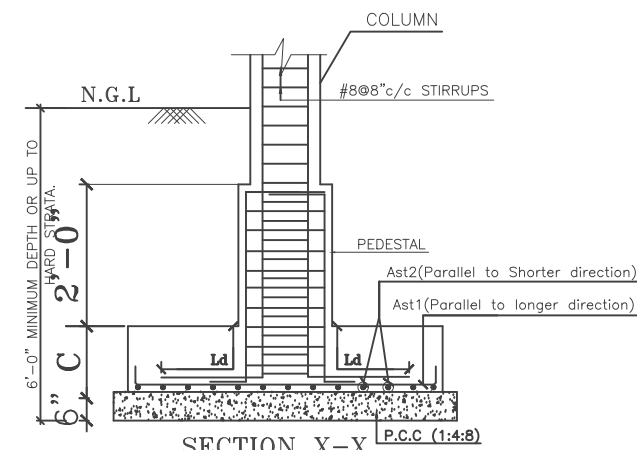


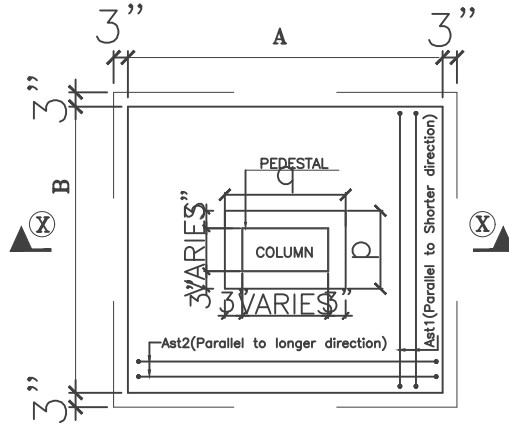
SCHEDULE OF COLUMNS						
COL. TYPE	MIX	SIZE (axb)	MAIN STEEL	TIES & LINKS	C/S OF COLUMN	SIZE OF PEDSTAL (P x Q)
C1	M-20	6"x18"	<ul style="list-style-type: none"> ● 4-#16mm ○ 4-#12mm 	#8@6"c/c 1 TIE		(12"x24")
C2	M-20	6"x18"	● 8-#16mm	#8@6"c/c 1 TIE		(12"x24")
C3	M-20	24"x24"	● 8-#20mm	#8@6"c/c 4 TIES		
C4	M-20	24"x48"	● 12-#20mm	#8@6"c/c 4 TIES		



PEDASTAL DETAILS FOR C1,C2



SECTION X-X



TYPICAL FOOTING PLAN

NOTES:

1. DO NOT SCALE THIS DRAWING. FOLLOW FIGURED DIMENSIONS.
2. ALL DIMENSIONS ARE IN FEET & INCHES ONLY.
3. USE VIBRATED REINFORCED CONCRETE OF MIX M20 FOR FOOTINGS AND COLUMNS CONFORMING TO IS:456-2000.
4. USE HYSD BARS OF Fe-415 AS PER IS:1786-1985.
5. MIN. LAP LENGTHS RECOMENDED FOR REINFORCEMENT.

BAR DIA	DEVELOPMENT LENGTH (Ld)
#8	1'-3"
#10	1'-9"
#12	2'-0"
#16	2'-6"
#20	3'-3"
#25	4'-0"

6. NOT MORE THAN 33% OF COLUMN REINFORCEMENT SHALL BE LAPPED AT A PARTICULAR LOCATION.
7. THE STRUCTURE IS DESIGNED FOR G+2 FLOORS ONLY.
8. S.B.C. OF SOIL IS ADOPTED AS 350 kN/Sqm
9. PROVIDE CLEAR COVER FOR FOOTINGS=2", COLUMNS=1½", BEAM STIRRUPS=¾", SLAB=¾"
10. STIRRUPS SHOULD HAVE STANDARD HOOK AS PER SP-34.
11. THE DIFFERENCE IN LEVELS OF DEPTH OF ADJACENT FOOTINGS SHALL NOT BE GREATER THAN HALF THE CLEAR DISTANCE BETWEEN THEM.
12. CORRELATE WITH THE RELEVANT DRAWINGS FOR THE NECESSARY DETAILS
13. ANY DISCREPANCY FROM THE DRAWING SHALL BE BROUGHT TO THE NOTICE OF CONSULTANTS.
14. THIS DRAWING SHOULD BE READ IN CONJUNCTION WITH RELEVANT ARCHITECTURAL DWG.

2				
1				
REV	DATE	DESCRIPTION	CHKD.BY	REFERENCE
Project : PROPOSED COMMERCIAL BUILDING AT CHERLAPALLY				
Title : REINFORCEMENT DETAILS OF COLUMNS				
Promoters: M/S. MODI BUILDERS				
DATE 28-05-2019		SCALE N.T.S.		DRAWN BY K.N
DESIGNED BY NARASIMHA		CHKD.BY		APPROVED BY
				REV.