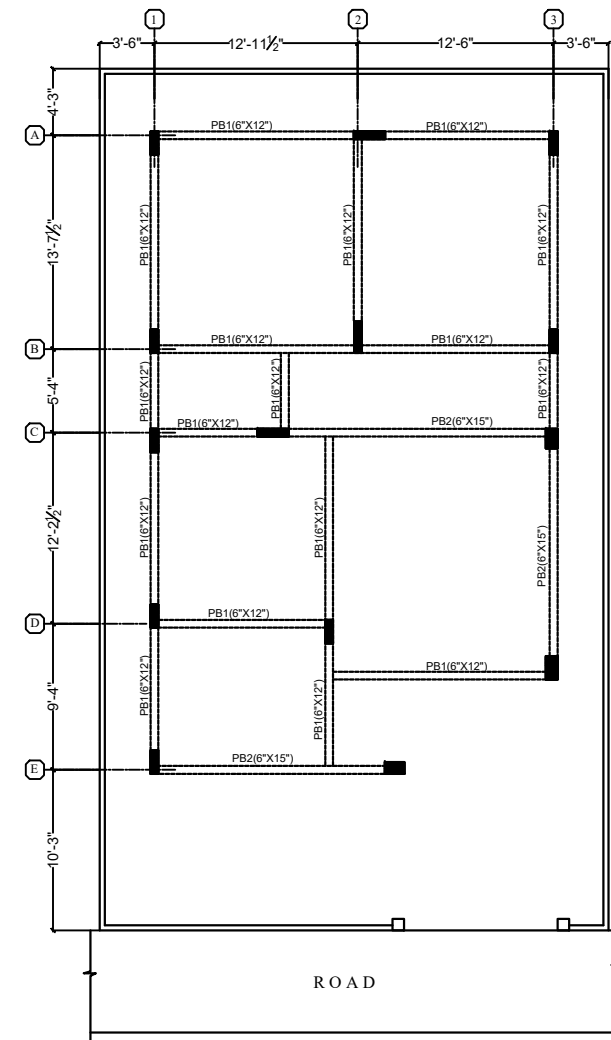


COLUMN SECTION DETAILS

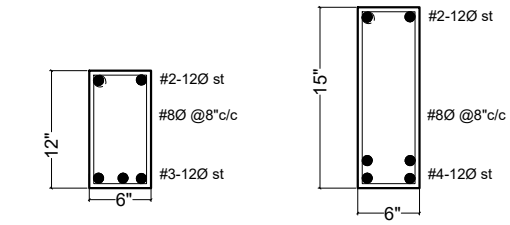
TYPE/ NOS	CONC. GRADE	SIZE	STEEL	SECTION	LATERAL TIES
C1	M25	6"x18"	4 nos 16Ø 2 nos 12Ø		8Ø@8" c/c
C2	M25	6"x24"	6 nos 16Ø		4-leg 8Ø@8" c/c
C3	M25	9"x15"	8 nos 16Ø		4-leg 8Ø@8" c/c
C4	M25	9"x18"	4 nos 20Ø+ 4 nos 16Ø		4-leg 8Ø@8" c/c

FOOTINGS SECTION DETAILS

TYPE/ NOS	CONC. GRADE	PIT SIZE	FOOTING SIZE (A X B)	DEPTH	REINFORCEMENT ALONG A&B
				d1	
F1	M20	5'6"x5'6"	5'0"x5'0"	15"	10Ø@5" c/c BOTH WAYS



PLINTH BEAM LAY-OUT



PLINTH BEAM DETAILS

- General Notes : --
1. Use M25 (1:1:2) grade for columns & M20 (1:1.5:3) for footings, slab & Beams
 2. Use FE500 grade for steel.
 3. Provide clear cover of 2" for footings & 1.5" for columns.
 4. S.B.C of the Soil is taken as 350kn/m2.
 5. Footings are designed for Ground +1 Floors
 6. Provide clear cover of 1" for beams

Note :- Refer architect center line drawing for center line dimensions.

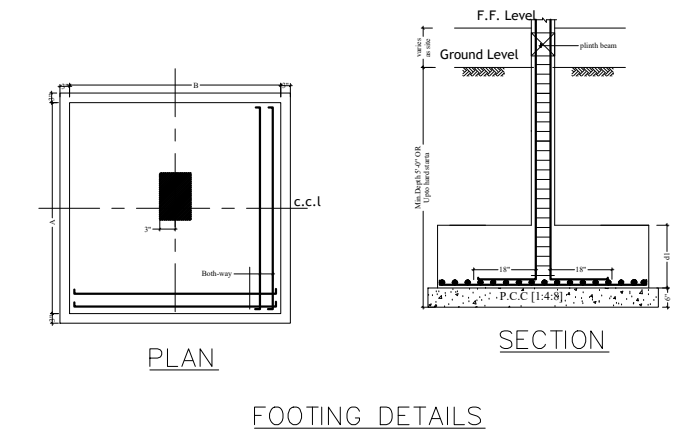
DESCRIPTION	DATE

Client: MODI PROPERTIES & INVESTMENTS PVT.LTD

Project: SHAMEERPET ,BLOOMDALE - (TYPE-B)

STRUCTURAL CONSULTANT: **KULKARNI CONSULTANT'S**
STRUCTURAL ENGINEERS, ARCHITECTS & PROJECT CONSULTANT'S
 #216, KUBERA TOWERS, NARAYAN GUJA, HYDERABAD.
 CONTACT NOS:- 04022223891, 09246343724, 09246343720.

DATE	20-6-2017	BLOOMDALE TYPE (D) SINGLE FLOOR	
DEALT BY	PAWAN	TITLE:	COLUMN , FOOTINGS & PLINTH BEAM DETAILS
DESIGN BY	SANTOSH		
CHECKED & APPROVED	KULKARNI	DWG. NO.	KC/SD/BLOOM/D1
		REV. No.	0



FOOTING DETAILS