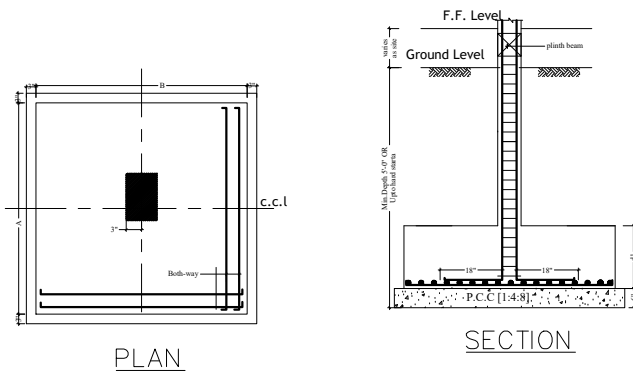


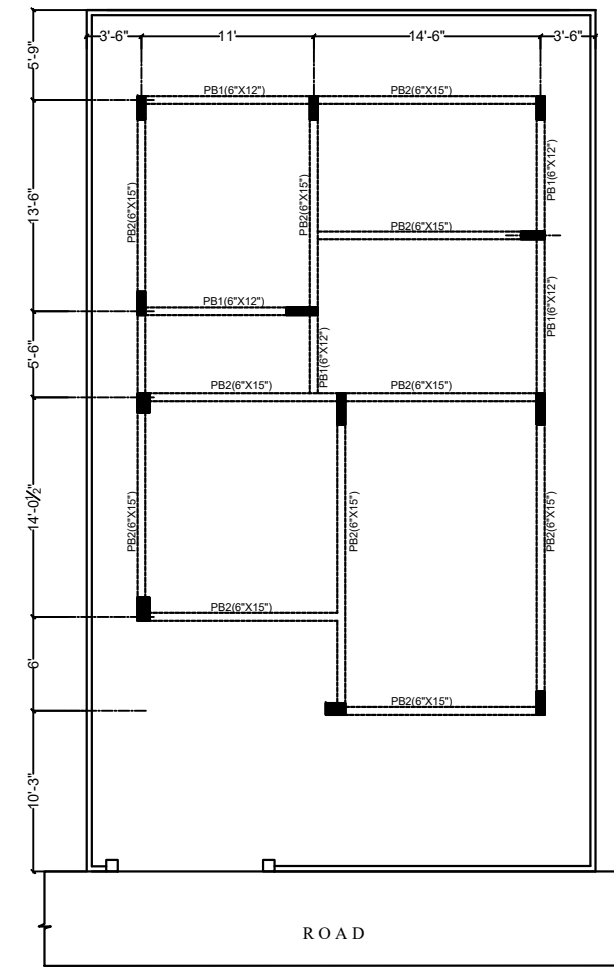
TYPE (D)



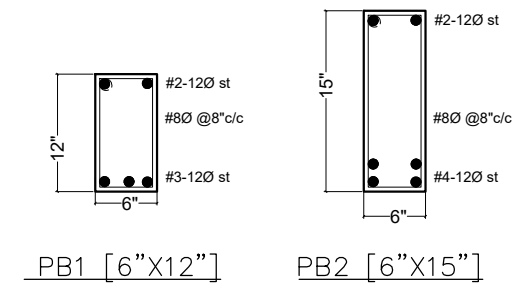
FOOTING DETAILS

COLUMN SECTION DETAILS					
TYPE/ NOS	CONC. GRADE	SIZE	STEEL	SECTION	LATERAL TIES
C1	M25	6"x18"	4 nos 16Ø 2 nos 12Ø		8Ø@8" c/c
C2	M25	6"x24"	6 nos 16Ø		4-leg 8Ø@8" c/c
C3	M25	9"x15"	8 nos 16Ø		4-leg 8Ø@8" c/c
C4	M25	9"x18"	4 nos 20Ø+ 4 nos 16Ø		4-leg 8Ø@8" c/c

FOOTINGS SECTION DETAILS					
TYPE/ NOS	CONC. GRADE	PIT SIZE	FOOTING SIZE (A X B)	DEPTHS	REINFORCEMENT ALONG A&B
				d1	
F1	M20	5'6"x5'6"	5'0"x5'0"	15"	10Ø@ 5" c/c BOTH WAYS



PLINTH BEAM LAY-OUT



PLINTH BEAM DETAILS

General Notes : --

1. Use M25 (1:1:2) grade for columns & M20 (1:1.5:3) for footings, slab & Beams
2. Use FE500 grade for steel.
3. Provide clear cover of 2" for footings & 1.5" for columns.
4. S.B.C of the Soil is taken as 350kn/m².
5. Footings are designed for Ground +1 Floors
6. Provide clear cover of 1" for beams

Note :- Refer architect center line drawing for center line dimensions.

DESCRIPTION		DATE
Client	MODI PROPERTIES & INVESTMENTS PVT.LTD	
Project	SHAMEERPET ,BLOOMDALE - (TYPE-D)	
STRUCTURAL CONSULTANT	KULKARNI CONSULTANT'S STRUCTURAL ENGINEERS, ARCHITECTS & PROJECT CONSULTANT'S #216, KUBERA TOWERS, NARAYAN GUJA, HYDERABAD. CONTACT NO'S:- 04022223891, 09246343724, 09246343720.	
DATE	20-6-2017	BLOOMDALE TYPE (B) SINGLE FLOOR
DEALT BY	PAWAN	TITLE: COLUMN , FOOTINGS & PLINTH BEAM DETAILS
DESIGN BY	SANTOSH	DWG. NO. KC/SD/BLOOM/B1
CHECKED & APPROVED	KULKARNI	REV. No. 0