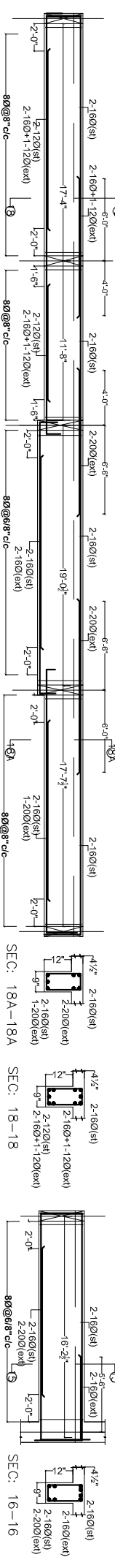
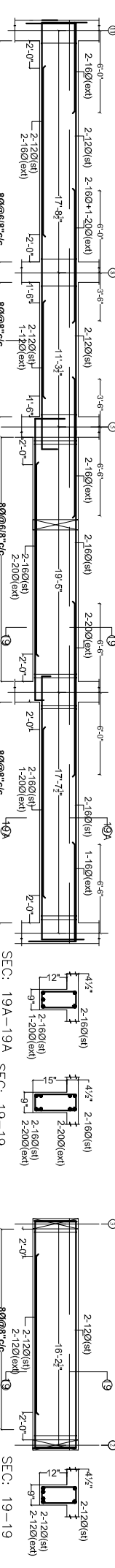


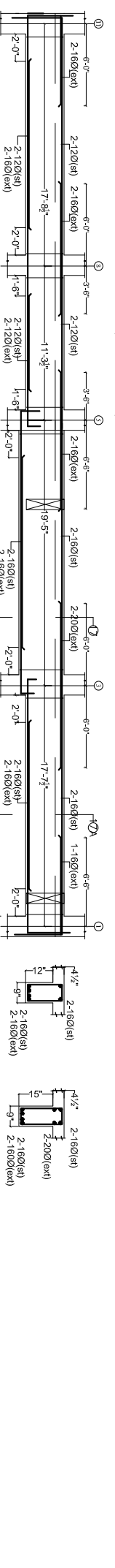
B10(9' X 16 1/2'')



B11(9' X 16 1/2'')



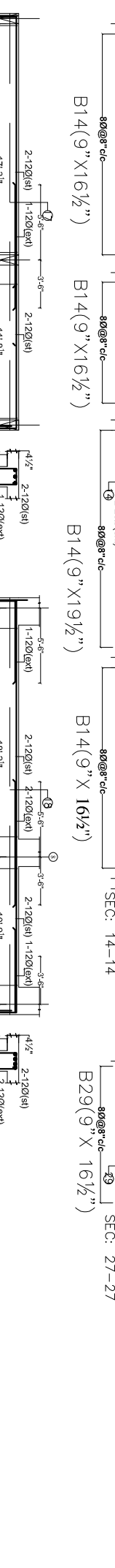
B12(9' X 16 1/2'')



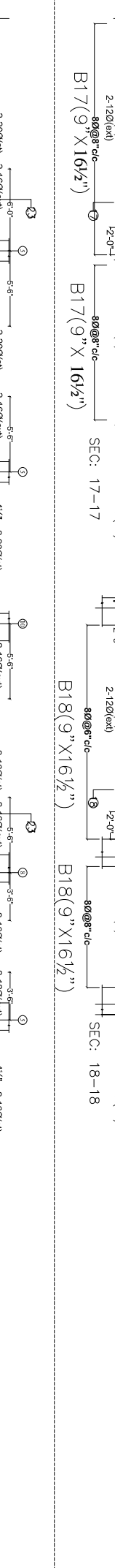
B13(9' X 16 1/2'')



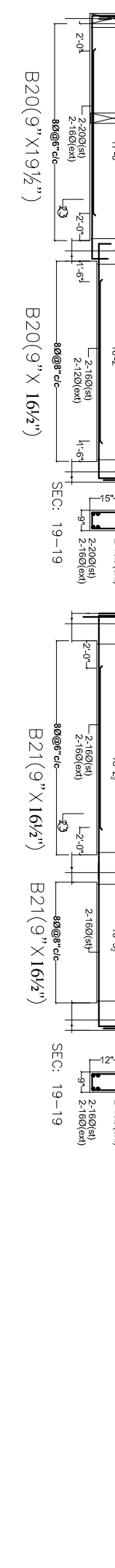
B14(9' X 16 1/2'')



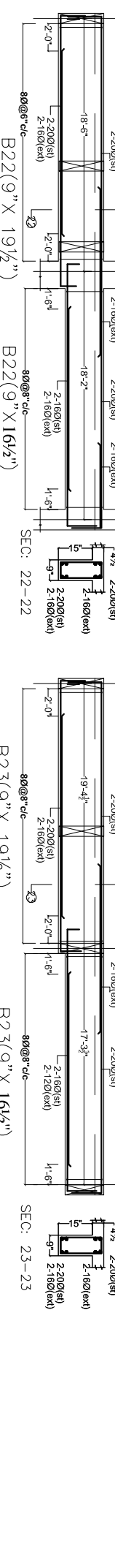
B17(9' X 16 1/2'')



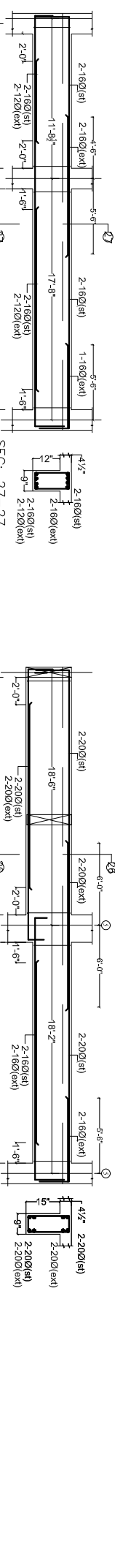
B18(9' X 16 1/2'')



B20(9' X 19 1/2'')



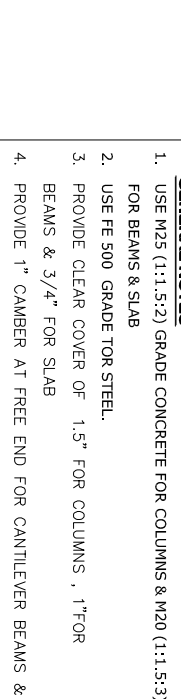
B21(9' X 16 1/2'')



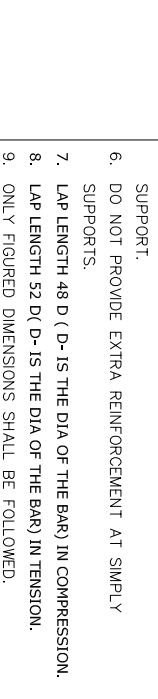
B22(9' X 19 1/2'')



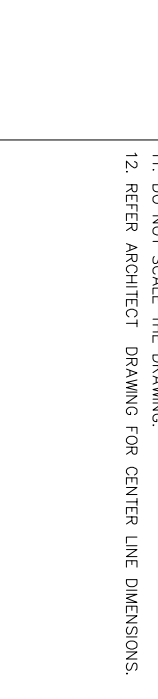
B23(9' X 16 1/2'')



B26(9' X 19 1/2'')



B27(9' X 16 1/2'')

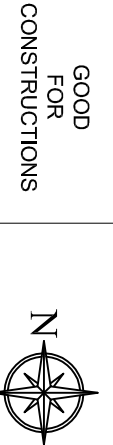


B29(9' X 16 1/2'')



B26(9' X 16 1/2'')

- GENERAL NOTES**
1. USE M25 (1:1.5:2) GRADE CONCRETE FOR COLUMNS & M20 (1:1.5:3) FOR BEAMS & SLAB
  2. USE FE 500 GRADE TOR STEEL.
  3. PROVIDE CLEAR COVER OF 1.5" FOR COLUMNS , 1" FOR BEAMS & 3/4" FOR SLAB
  4. PROVIDE 1" CAMBER AT FREE END FOR CANTILEVER BEAMS & SLABS.
  5. IN SLAB EXTEND -VE STEEL UPTO 0.30L FROM FACE OF SUPPORT.
  6. DO NOT PROVIDE EXTRA REINFORCEMENT AT SIMPLY SUPPORTS.
  7. LAP LENGTH 48 D ( D-IS THE DIA OF THE BAR) IN COMPRESSION.
  8. LAP LENGTH 52 D ( D-IS THE DIA OF THE BAR) IN TENSION.
  9. ONLY FIGURED DIMENSIONS SHALL BE FOLLOWED.
  10. ALL THE DIMENSIONS ARE IN INCHES & FEET.
  11. DO NOT SCALE THE DRAWING.
  12. REFER ARCHITECT DRAWING FOR CENTER LINE DIMENSIONS.



**GOOD FOR CONSTRUCTIONS**

**OWNERS & DEVELOPERS:**  
5-4-187 /3&4, Soham mansarovar, IT Floor, K.G. Road, Sector-3, Gurgaon-122002, Haryana, India. Phone: 91-98100-27544/058. E-mail: info@modiprojects.com

**ARCHITECTS & ENGINEERS:**  
**KULKARNI CONSULTANTS**  
STRUCTURAL ENGINEERS, ARCHITECTS & PROJECT CONSULTANTS  
#216, KUBERA TOWERS, MARANI COLONY, HYDERABAD, INDIA. CONTACT NO: 984932591, 924932592, 924932593

SCALE: N.T.S.  
DATE: 7-11-17  
DRAWN: PAVAN  
CHECKED: KULKARNI  
APPROVED: KULKARNI

TITLE: VISTA HOMES BLOCK - (D)  
CELLAR BEAM DETAILS

DWG. NO: KC/HH/SD/D/10  
REV. NO: 0