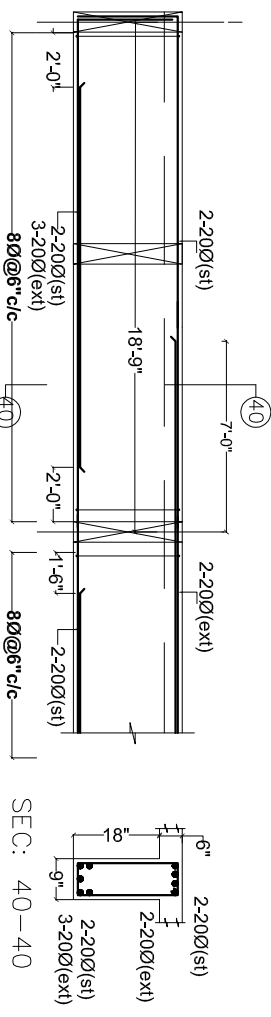
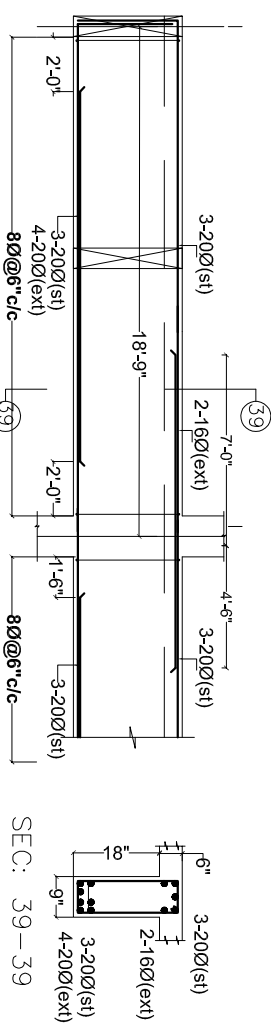


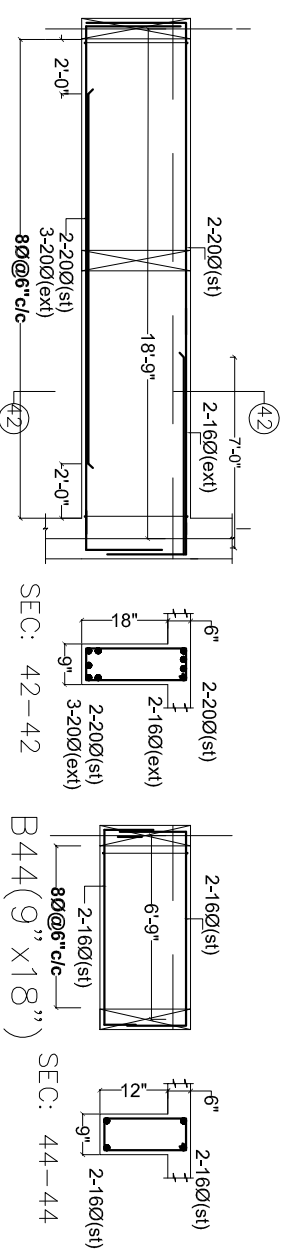
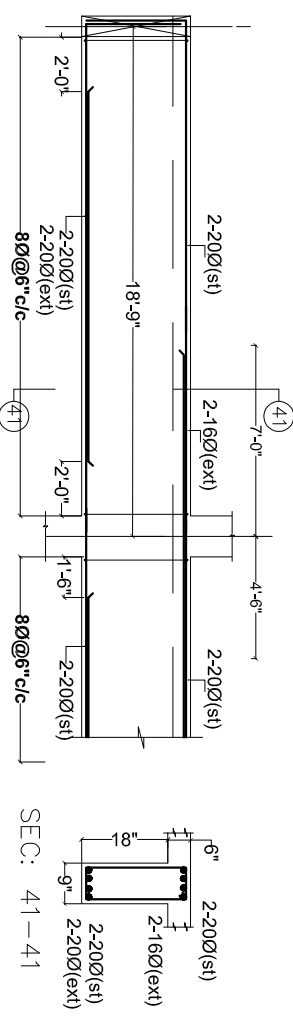
B36a(9" x 24")

B38(9" x 27")



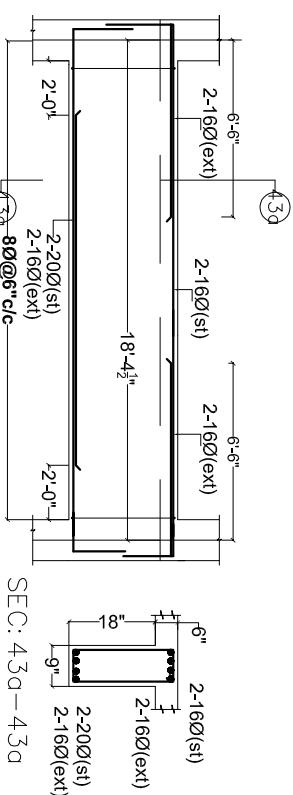
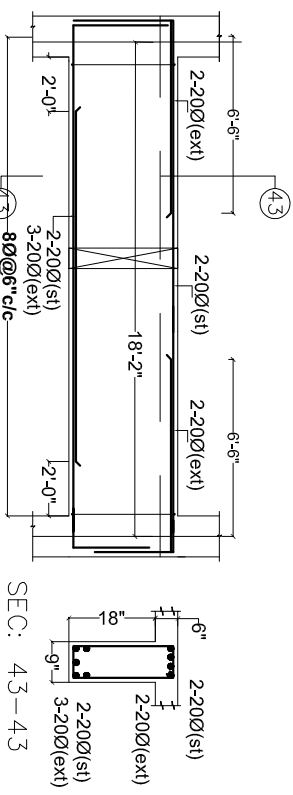
B39(9" x 24")

B40(9" x 24")



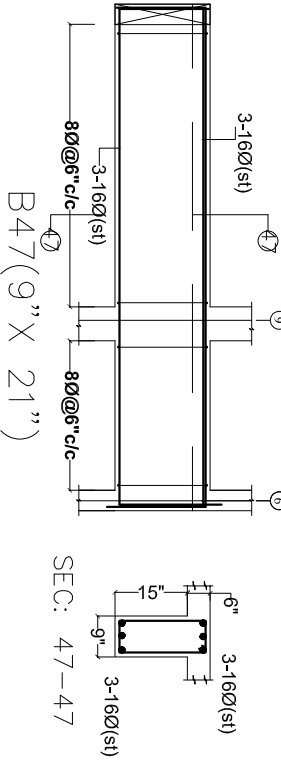
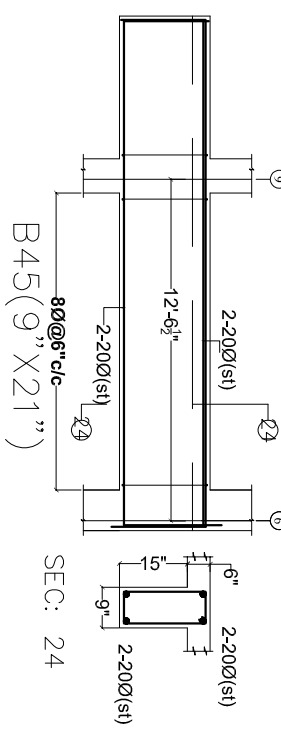
B41(9" x 24")

B42(9" x 24")



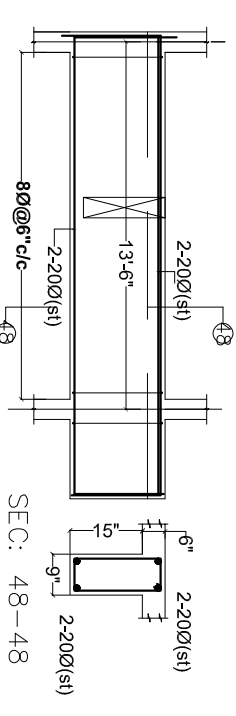
B43(9" x 24")

B43a(9" x 24")

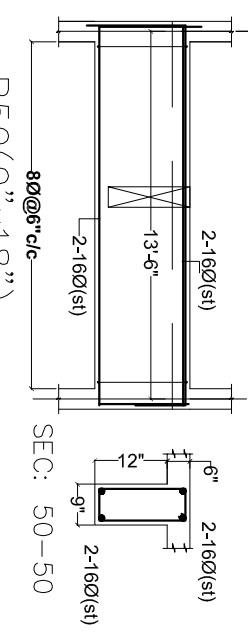
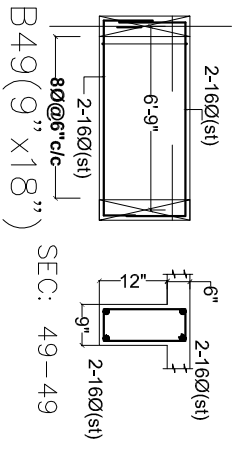


B45(9" x 21")

B47(9" x 21")

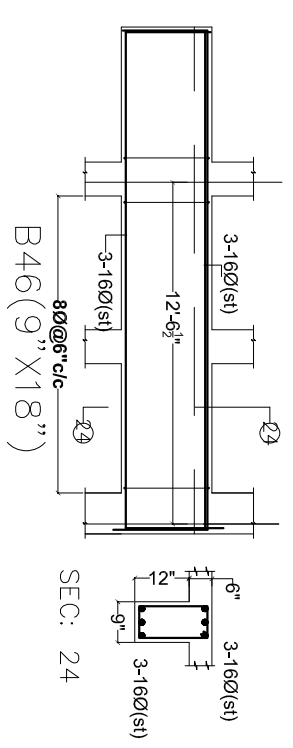


B48(9" x 21")



B49(9" x 18")

B50(9" x 18")



B46(9" x 18")

B46(9" x 18")

- GENERAL NOTES**
- USE M25 (1:1.5:2) GRADE CONCRETE FOR COLUMNS & M20 (1:1.5:3) FOR BEAMS & SLAB
 - USE FE 500 GRADE TOR STEEL.
 - PROVIDE CLEAR COVER OF 1.5" FOR COLUMNS , 1"FOR BEAMS & 3/4" FOR SLAB
 - PROVIDE 1" CAMBER AT FREE END FOR CANTILEVER BEAMS & SLABS.
 - IN SLAB EXTEND -VE STEEL UPTO 0.30L FROM FACE OF SUPPORT.
 - DO NOT PROVIDE EXTRA REINFORCEMENT AT SIMPLY SUPPORTS.
 - LAP LENGTH 48 D (D-IS THE DIA OF THE BAR) IN COMPRESSION.
 - LAP LENGTH 52 DC D-15 THE DIA OF THE BAR) IN TENSION.
 - ONLY FIGURED DIMENSIONS SHALL BE FOLLOWED.
 - ALL THE DIMENSIONS ARE IN INCHES & FEET.
 - DO NOT SCALE THE DRAWING.
 - REFER ARCHITECT DRAWING FOR CENTER LINE DIMENSIONS.

GOOD FOR CONSTRUCTIONS

Ownters & Developers:		5-4-187 / 3&4, Soham mansion, II Floor, K.G. Road, Sector-30/03, PWD, Gurgaon, Haryana	
Architects & Engineers:		KULKARNI CONSULTANTS STRUCTURAL ENGINEERS, ARCHITECTS & PROJECT CONSULTANTS #216, KUBERA TOWERS, HARJAIN GOLA, MUMBAI. CONTACT NO. 9822328921, 9226032725, 9226032726	
SCALE:	N.T.S	VISTA HOMES	BLOCK - (D)
DATE:	7-11-17	TITLE:	CELLAR BEAM DETAILS
DRAWN:	PAWAN	DWG. NO.:	KC/HH/SD/D/12
CHECKED:	KULKARNI	SH. NO.:	
APPROVED:		REV. NO.:	0