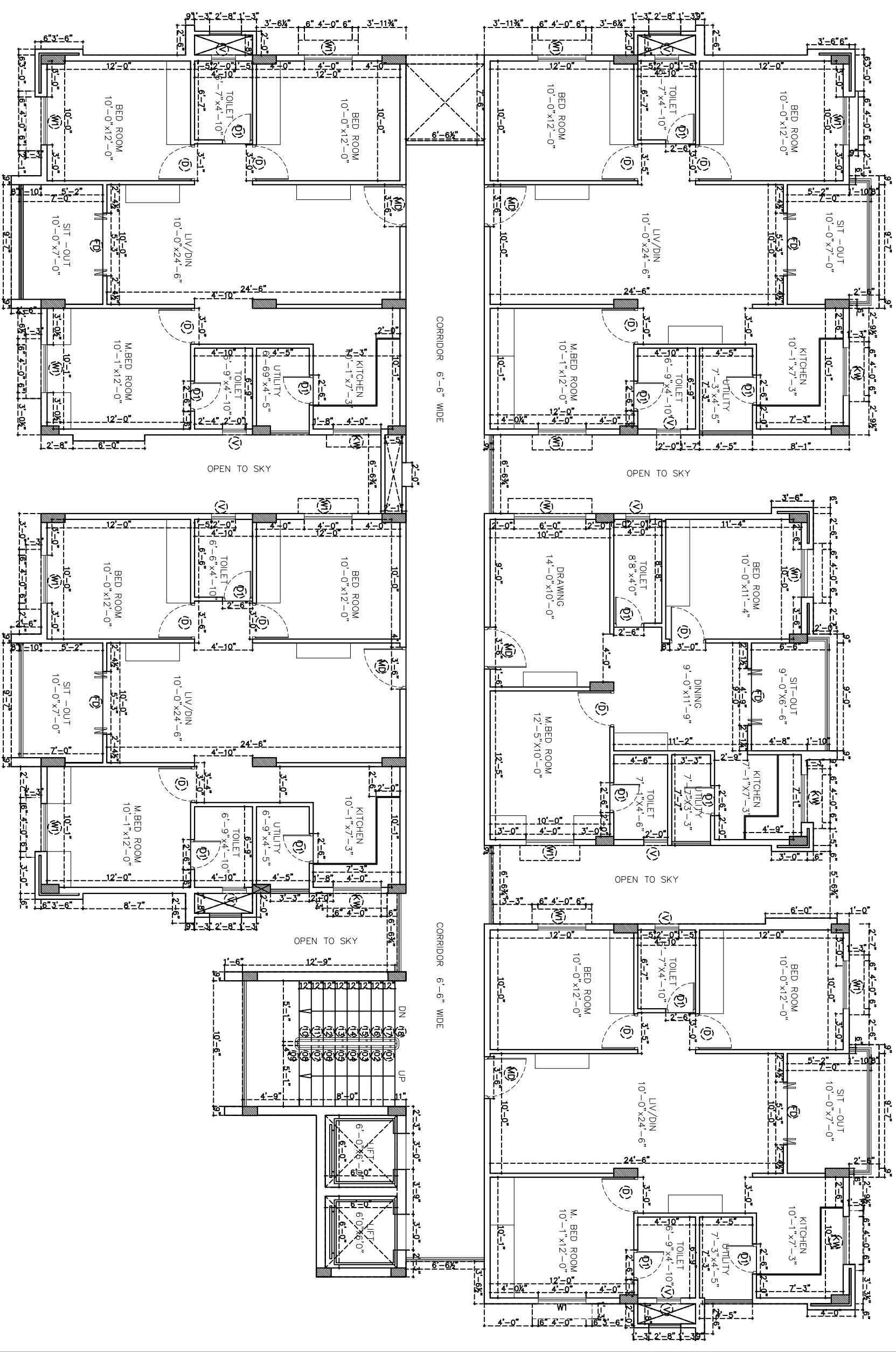
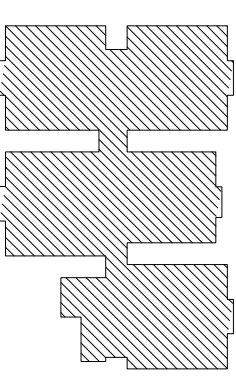


- NOTES**
1. ALL THE DIMENSIONS ARE IN FPS SYSTEM.
 2. ONLY FIGURED DIMENSIONS SHALL BE FOLLOWED, DO NOT SCALE THE DRAWING.
 3. THIS SHEET SUPERSEDES ALL PREVIOUSLY REVISED ARCHITECTURAL DRAWING OF SAME NUMBERS
 4. ALL LARGE SCALE DRAWINGS SHALL SUPERSEDE THE SMALL SCALE ONES.
 5. ANY DISCREPANCY IN THE DRAWINGS SHALL BE BROUGHT TO THE NOTICE OF THE CONSULTANTS, BEFORE EXECUTION OF WORK.

KEY PLAN



GOOD FOR CONSTRUCTION

Owners & Developers:
MODI PROPERTIES & INVESTMENTS
 54-187 / 2&4, Sahani International Floor,
 Phone: 963355511 (deline) Fax: 090-027544058
 E-mail: info@modiproperties.com

Architects & Engineers:
KULKARNI CONSULTANTS
 STRUCTURAL ENGINEERS, ARCHITECTS & PROJECT CONSULTANTS
 #216, RUBRA TOWNS, NARAYANI GUDA, PUNE
 CONTACT NOS.: 9402223891, 09546343274, 09546343276

Architects & Engineers:
KULKARNI CONSULTANTS
 STRUCTURAL ENGINEERS, ARCHITECTS & PROJECT CONSULTANTS
 #216, RUBRA TOWNS, NARAYANI GUDA, PUNE
 CONTACT NOS.: 9402223891, 09546343274, 09546343276

SCALE:	N.T.S.	VISTA HOMES
DATE:	14-12-2017	FIRST FLOOR
DRAWN:		WORKING PLAN
CHECKED:		
APPROVED:	KULKARNI	
DWG. NO./C./H./D./B./B./B.		REV. NO.
		00