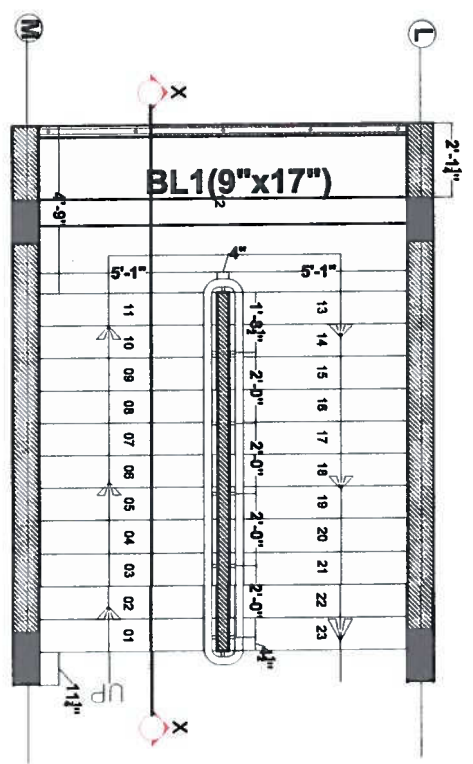
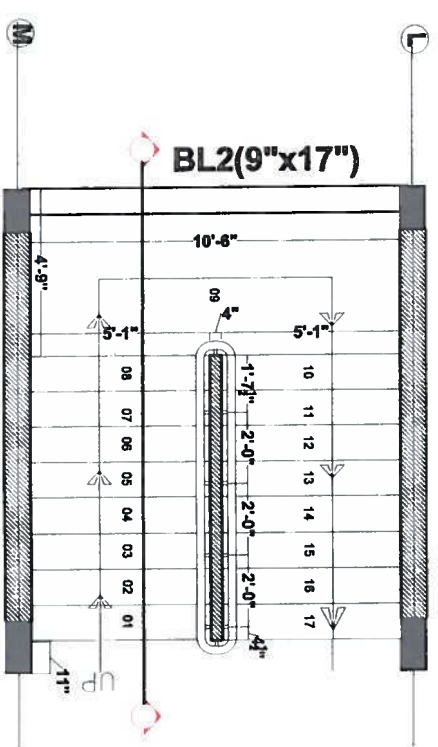


R.C.C SECTION DETAILS



STAIRCASE PLAN CELLAR FLOOR



STAIRCASE PLAN-1 TYPICAL FLOOR  
(GROUND, 1ST, 2ND, 3RD & 4TH FLOORS)



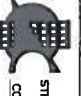
- GENERAL NOTES**
1. USE M25 (1:1.5:2) GRADE CONCRETE FOR COLUMNS & M20 (1:1.5:3) FOR BEAMS & SLAB
  2. USE FE415 GRADE TOR STEEL.
  3. PROVIDE CLEAR COVER OF 1.5" FOR COLUMNS, 1" FOR BEAMS & 3/4" FOR SLAB
  4. PROVIDE 1" CAMBER AT FREE END FOR CANTILEVER BEAMS & SLABS.
  5. IN SLAB EXTEND -VE STEEL UPTO 0.30L FROM FACE OF SUPPORT.
  6. DO NOT PROVIDE EXTRA REINFORCEMENT AT SIMPLY SUPPORTS.
  7. LAP LENGTH 48 D (D- IS THE DIA OF THE BAR) IN COMPRESSION.
  8. LAP LENGTH 52 D (D- IS THE DIA OF THE BAR) IN TENSION.
  9. ONLY FIGURED DIMENSIONS SHALL BE FOLLOWED.
  10. ALL THE DIMENSIONS ARE IN INCHES & FEET.
  11. DO NOT SCALE THE DRAWING.
  12. REFER ARCHITECT DRAWING FOR CENTER LINE DIMENSIONS.

APPROVED FOR CONSTRUCTION  
 20 MAR 2019  
 SOHAM MODI  
 MANAGING DIRECTOR



REVISION	DESCRIPTION	DATE

**GOOD FOR CONSTRUCTION**

<b>Owners &amp; Developers:</b> 5-4-187 / 384, Soham mansion II Floor, M.G. Road, Secunderabad-500003, Phone: 66335551(4lines) Fax: 040-27544058 E-mail: info@modiproperties.com	<b>Architects &amp; Engineers:</b>  <b>KULKARNI CONSULTANTS</b> STRUCTURAL ENGINEERS, ARCHITECTS & PROJECT CONSULTANTS #216, KUBERA TOWERS, NARAYAN GUDA, HYDRABAD. CONTACT NOS.: 0402223891, 09246343724, 09246343720
SCALE: NTS DATE: 20-03-2019 DRAWN: PAVANI CHECKED: KULKARNI APPROVED: KULKARNI	VISTA HOMES BLOCK - E <b>TITLE:</b> TYPICAL STAIRCASE TYPICAL BLOCKS DWG NO: RC/WH/50/ REV/NO: 0