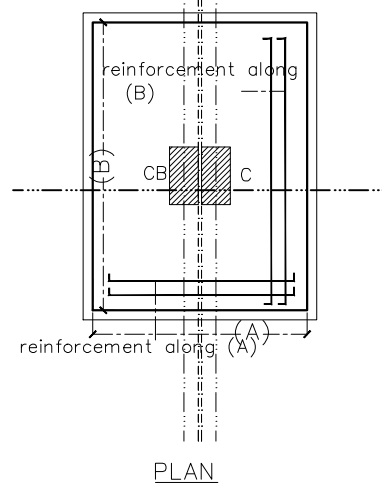
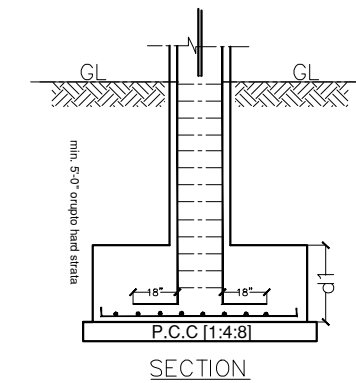
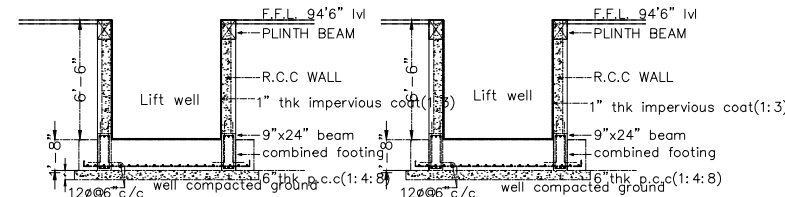


COLUMN CURTAILMENT & REDUCTION DETAILS

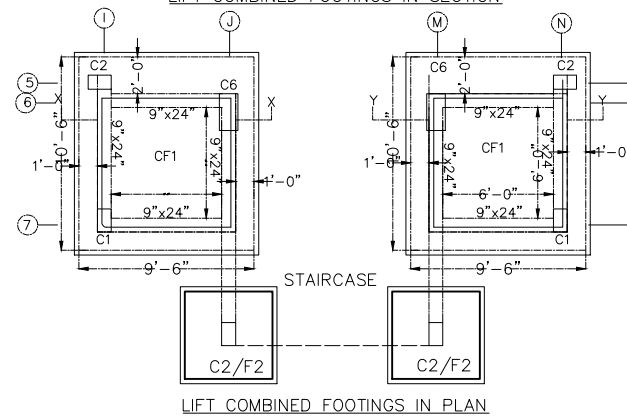
CELLAR FLOOR					GROUND FLOOR & FIRST FLOOR			SECOND FLOOR & THIRD FLOOR			FOURTH FLOOR		
TYPE/ NOS	SIZE	STEEL	SECTION	LATERAL TIES	SIZE	STEEL	SECTION	SIZE	STEEL	SECTION	SIZE	STEEL	SECTION
C1	9"x18"	4-16φ 4-12φ			9"x18"	4-16φ 4-12φ		9"x18"	4-16φ 4-12φ		9"x18"	4-16φ 4-12φ	
C2	9"x18"	8-16φ			9"x18"	8-16φ		9"x18"	6-16φ		9"x18"	6-16φ	
C3	9"x18"	6-20φ 4-16φ			9"x18"	6-20φ 4-16φ		9"x18"	4-20φ 4-16φ		9"x18"	8-16φ	
C4	9"x21"	6-20φ 4-16φ			9"x21"	6-20φ 4-16φ		9"x21"	4-20φ 4-16φ		9"x21"	4-20φ 2-16φ	
C5	9"x24"	6-20φ 8-16φ			9"x24"	4-20φ 6-16φ		9"x24"	4-20φ 4-16φ		9"x21"	4-20φ 2-16φ	
C6	12"x24"	8-20φ 6-16φ			9"x24"	8-20φ 6-16φ		9"x24"	4-20φ 6-16φ		9"x21"	4-20φ 2-16φ	
C7	12"x30"	10-20φ 6-16φ			9"x30"	10-20φ 6-16φ		9"x24"	6-20φ 6-16φ		9"x21"	4-20φ 4-16φ	
C8	12"x30"	6-25φ 8-20φ			9"x30"	6-25φ 8-20φ		9"x30"	4-25φ 6-20φ		9"x24"	4-20φ 6-16φ	
CB	9"x 18"	4-16φ 4-12φ											



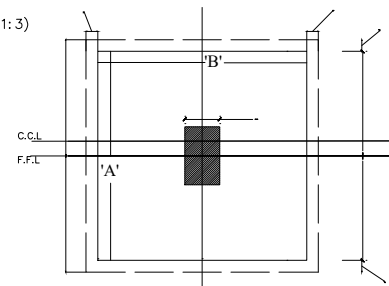
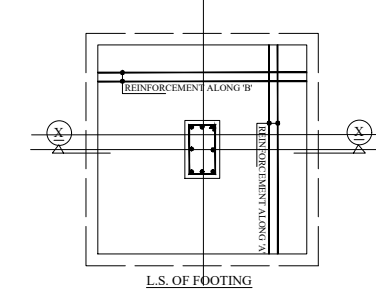
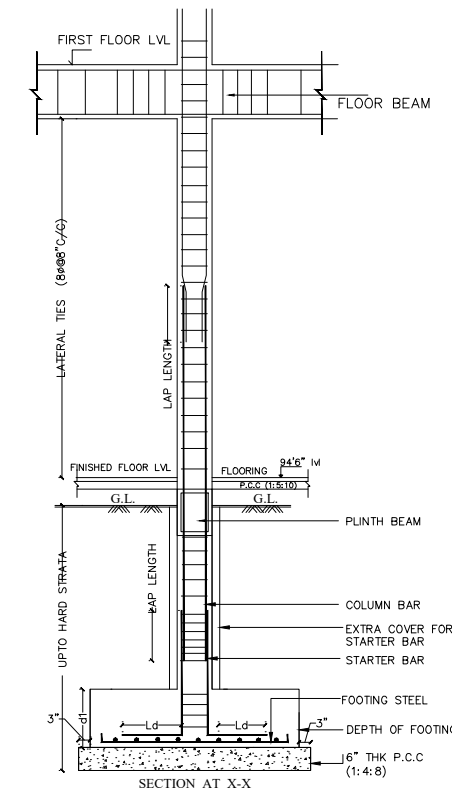
COMBINED FOOTING



LIFT COMBINED FOOTINGS IN SECTION



LIFT COMBINED FOOTINGS IN PLAN



TYPICAL DETAIL OF FOOTING

- NOTE:
- Do not scale this drawing follow figured dimensions
 - All dimensions are in feet n inches only
 - Use vibrated reinforced concrete of mix & M25 for columns and pedestal conforming to IS 456-2000
 - Use hysd bars of fe -500 as per IS 1786-85
 - Lap lengths recommended for reinforcement
 - This building is designed for Cellar, Ground + Four floors only.
 - S.B.C. of soil is 300 Kn/sqm
 - Any loose or protruding builders shall be removed before laying foundation concrete and shall be filled with p.c.c.
 - Wherever necessary drilling shall be resorted to in hard sheet rock only
 - Concrete shall be vibrated for obtaining optimum density.
 - The difference in levels of depth of adjacent footing shall not be greater than half the clear distance between them.
 - Provide clear cover for footings 2", columns 1 1/2". The cover shall be provided to all reinforcements including ties and stirrups wired cover blocks of same grade of concrete and duly cured.
 - Stirrups should have standard hook as per sp-34.
 - Correlate with the relevant drawings for necessary details.
 - Any drawing should be read in conjunction with relevant architectural drawing.
 - All dimensions shall be verified by the engineer in charge before laying concrete with respect to Architectural dwg.
 - The provisions made in IS: 456-2000 and sp-34 and other relevant codes should be strictly adhered during execution.
 - If any variation in soil strata found during the execution of the foundation soils, when compared with the considered strata it should be brought to the notice of engineer in charge and consultants for revising foundations.

FOOTINGSSECTION DETAILS				
TYPE/ NOS	PIT SIZE	FOOTING SIZE (A X B)	DEPTH d	REINFORCEMENT ALONG A&B
F1	5'6"x5'6"	5'0"x5'0"	18"	12φ@ 6"c/c BOTH WAYS
F2	6'6"x6'6"	6'0"x6'0"	21"	12φ@ 5"c/c BOTH WAYS
F3	7'6"x7'6"	7'0"x7'0"	24"	12φ@ 5"c/c BOTH WAYS
F4	8'0"x8'0"	7'6"x7'6"	27"	12φ@ 5"c/c BOTH WAYS
F5	9'0"x9'0"	8'6"x8'6"	30"	16φ@ 6"c/c BOTH WAYS
F6	9'9"x9'9"	9'3"x9'3"	33"	16φ@ 6"c/c BOTH WAYS
F7	11'3"x11'3"	10'9"x10'9"	36"	16φ@ 6"c/c BOTH WAYS

FOOTINGSSECTION DETAILS				
TYPE/ NOS	PIT SIZE	FOOTING SIZE (A X B)	DEPTH d	REINFORCEMENT ALONG A&B
CF1	6'6"x6'6"	6'0"x6'0"	21"	12φ@ 5"c/c BOTH WAYS
CF2	7'6"x7'6"	7'0"x7'0"	24"	12φ@ 5"c/c BOTH WAYS
CF3	9'9"x9'9"	9'3"x9'3"	33"	16φ@ 6"c/c BOTH WAYS

1.	REVISED	9-10-15
DESCRIPTION		DATE
GOOD FOR CONSTRUCTION		
Client	MODI PROPERTIES & INVESTMENTS PVT.LTD	
Project	VISTA HOMES (E - BLOCK)	
STRUCTURAL CONSULTANT	KULKARNI CONSULTANTS STRUCTURAL ENGINEERS, ARCHITECTS & PROJECT CONSULTANTS #216, KUBERA TOWER'S, NARAYAN GUDA, HYDERABAD. CONTACT NO:- 9462323891, 9946434724, 9926643720.	
DATE	5-9-2018	
DEALT BY	SANISH	
DESIGN BY	SANTOSH	TITLE: COLUMN FOOTING DETAILS
CHECKED BY		DWG. NO. KC/MBC/SD/
APPROVED	KULKARNI	REV No. 0