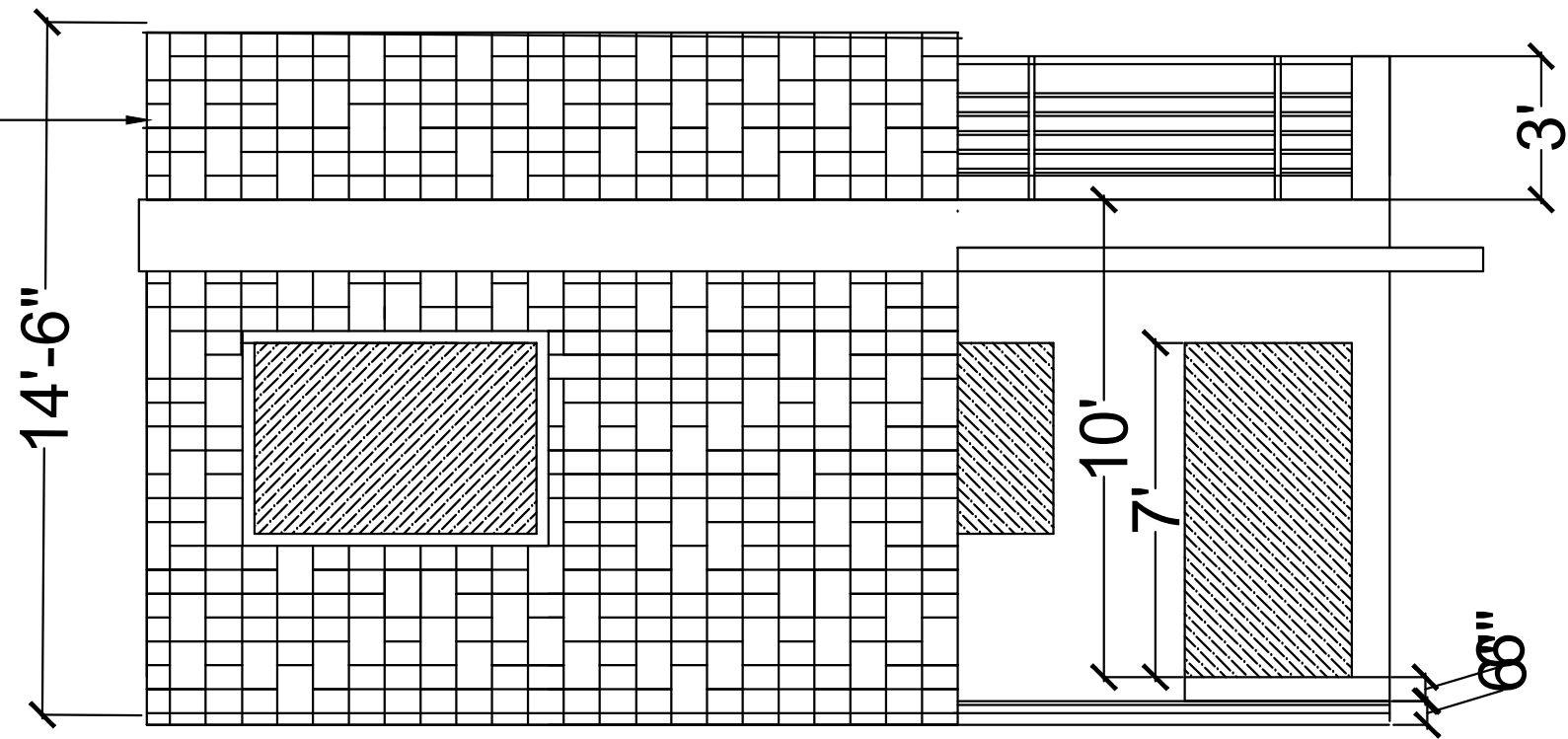




9"X6" & 9"x12" TILES  
(slate/ himachal stone)



TYPE - C, D (single floor)  
ELEVATION

Description	Direction	Owners & Developers :	Date : 1-2-18	Promoted by
TYPE - C, D (single floor) ELEVATION DETAIL		Modi Properties & Investment Pvt Ltd.	Architects  Architectural Associates 8-1-383, R. P. Road, Secunderabad-3 subashanandsagar@hotmail.com	Modi Properties & Investments Pvt. Ltd. Phone:+91-40-66335551
		Project Name & Phase :		
		Bloomdale - Shamirpet, Hyderabad		