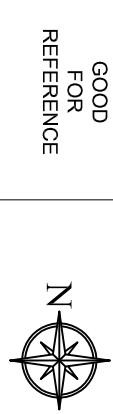
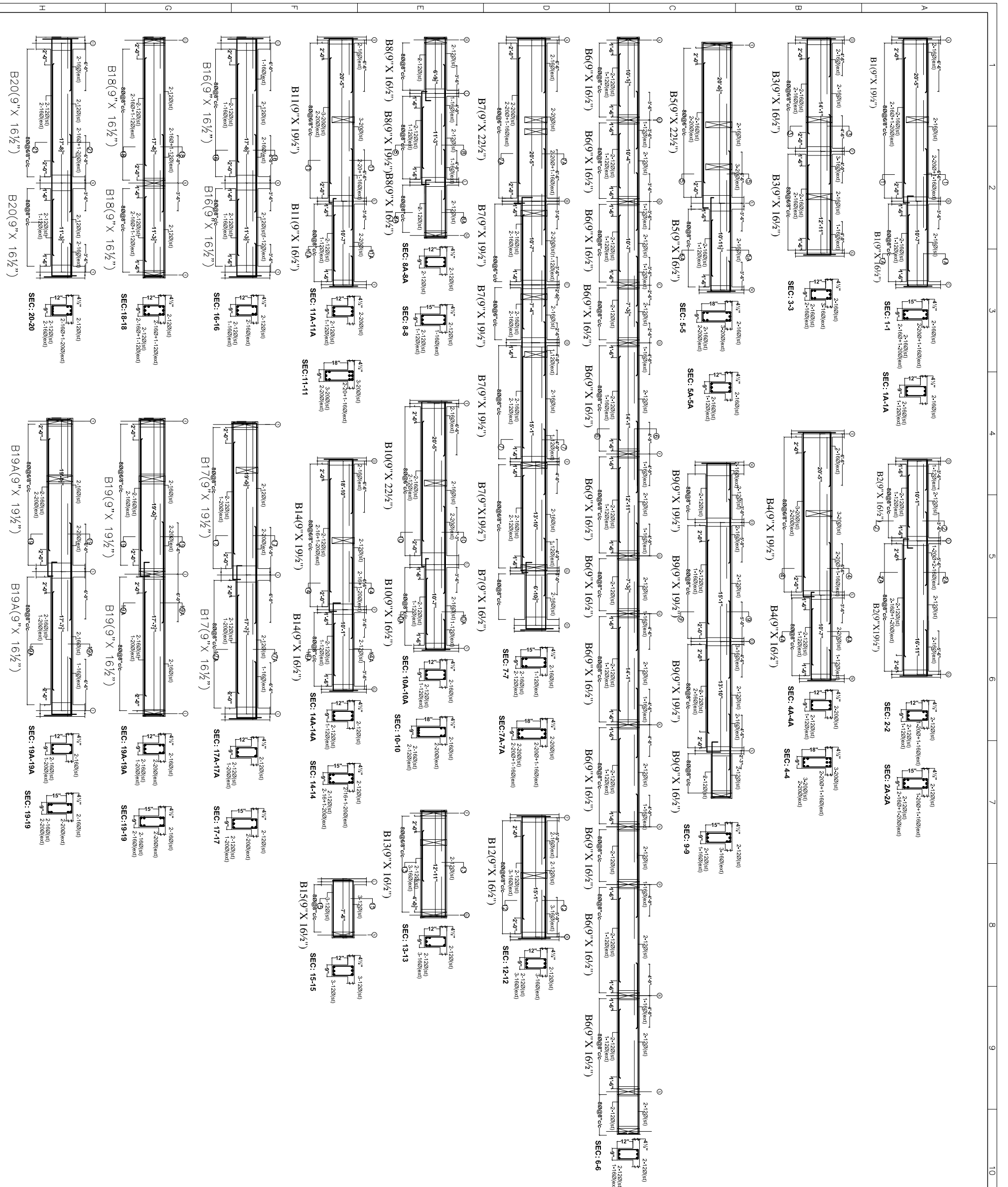


- GENERAL NOTES**
1. USE M25 (1:1.5:2) GRADE CONCRETE FOR COLUMNS & M20 (1:1.5:3) FOR BEAMS & SLAB
 2. USE FE415 GRADE TOR STEEL.
 3. PROVIDE CLEAR COVER OF 1.5" FOR COLUMNS , 1" FOR BEAMS & 3/4" FOR SLAB
 4. PROVIDE 1" CAMBER AT FREE END FOR CANTILEVER BEAMS & SLABS.
 5. IN SLAB EXTEND -VE STEEL UP TO 0.30L FROM FACE OF SUPPORT.
 6. DO NOT PROVIDE EXTRA REINFORCEMENT AT SIMPLY SUPPORTS.
 7. LAP LENGTH 48 D (D-15 THE DIA OF THE BAR) IN COMPRESSION.
 8. LAP LENGTH 52 D (D-15 THE DIA OF THE BAR) IN TENSION.
 9. ONLY FIGURED DIMENSIONS SHALL BE FOLLOWED.
 10. ALL THE DIMENSIONS ARE IN INCHES & FEET.
 11. DO NOT SCALE THE DRAWING.
 12. REFER ARCHITECT DRAWING FOR CENTER LINE DIMENSIONS.



GOOD FOR REFERENCE

Owners & Developers:
 5-4-187 /384,Soham mansion,11 Floor,
 M.G. Road, Secunderabad-500003.
 Phone:65335551(4lines) Fax:040-27544058
 E-mail: info @moddproperties.com

KULKARNI CONSULTANTS
 STRUCTURAL ENGINEERS, ARCHITECTS & PROJECT CONSULTANTS
 #216, KUBERA TOWERS, NARAYANI GUARDIANERABAD,
 CONTRACT NO:SE: 0902322891, 0924634372A, 0924634372B.

SCALE:	N.T.S	VISTA HOMES BLOCK - (F)
DATE:	11-11-13	Z-18
DRAWN:	PAWAN	TITLE: CELLAR SLAB DETAILS (107-6) LVL
CHECKED:	KULKARNI	DWG. NO. KC/HH/SD/F/
APPROVED:		REV. NO. 0