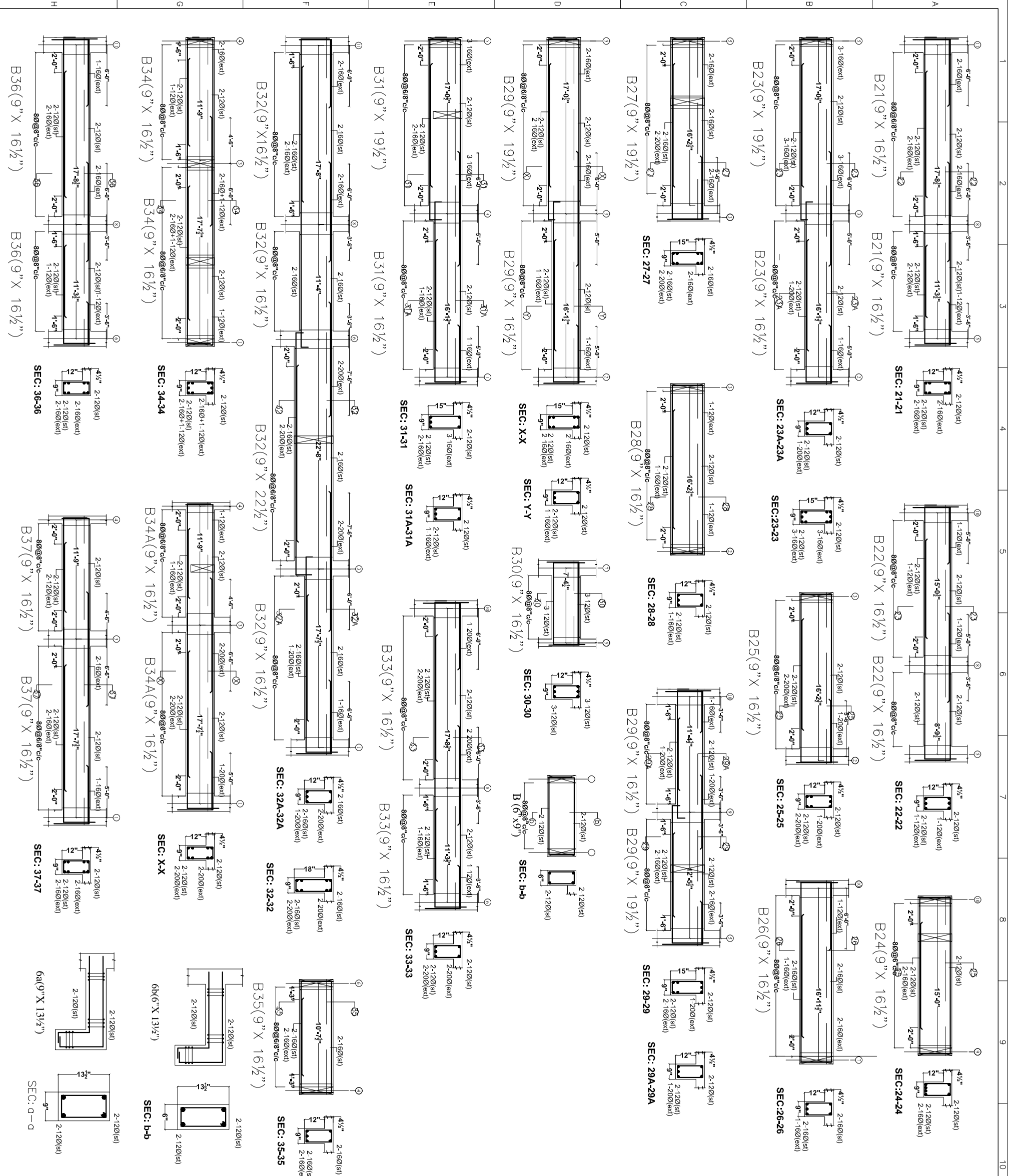


- GENERAL NOTES**
- USE M25 (1:1.5:2) GRADE CONCRETE FOR COLUMNS & M20 (1:1.5:3) FOR BEAMS & SLAB
  - USE FE415 GRADE TOR STEEL
  - PROVIDE CLEAR COVER OF 1.5" FOR COLUMNS, 1" FOR BEAMS & 3/4" FOR SLAB
  - PROVIDE 1" CAMBER AT FREE END FOR CANTILEVER BEAMS & SLABS.
  - IN SLAB EXTEND -VE STEEL UP TO 0.30L FROM FACE OF SUPPORT.
  - DO NOT PROVIDE EXTRA REINFORCEMENT AT SIMPLY SUPPORTS.
  - LAP LENGTH 48 D (D - IS THE DIA OF THE BAR) IN COMPRESSION.
  - LAP LENGTH 52 D (D - IS THE DIA OF THE BAR) IN TENSION.
  - ONLY FIGURED DIMENSIONS SHALL BE FOLLOWED.
  - ALL THE DIMENSIONS ARE IN INCHES & FEET.
  - DO NOT SCALE THE DRAWING.
  - REFER ARCHITECT DRAWING FOR CENTER LINE DIMENSIONS.



REV. No.	DESCRIPTION	DATE
1		



GOOD FOR REFERENCE

Owners & Developers:  
 Architects & Engineers:  
**KULKARNI CONSULTANTS**  
 STRUCTURAL ENGINEERS, ARCHITECTS & PROJECT CONSULTANTS  
 Phone: 633551 (4lines) Fax: 40-27544058  
 E-mail: info@kondiproperties.com

SCALE: NTS  
 DATE: 11-11-13 12:48  
 DRAWN: PAVANI  
 CHECKED: KULKARNI  
 APPROVED: KULKARNI  
 TITLE: CELLAR SLAB DETAILS  
 DMC. NO. KC/4H/50/F/  
 REV. No. 0