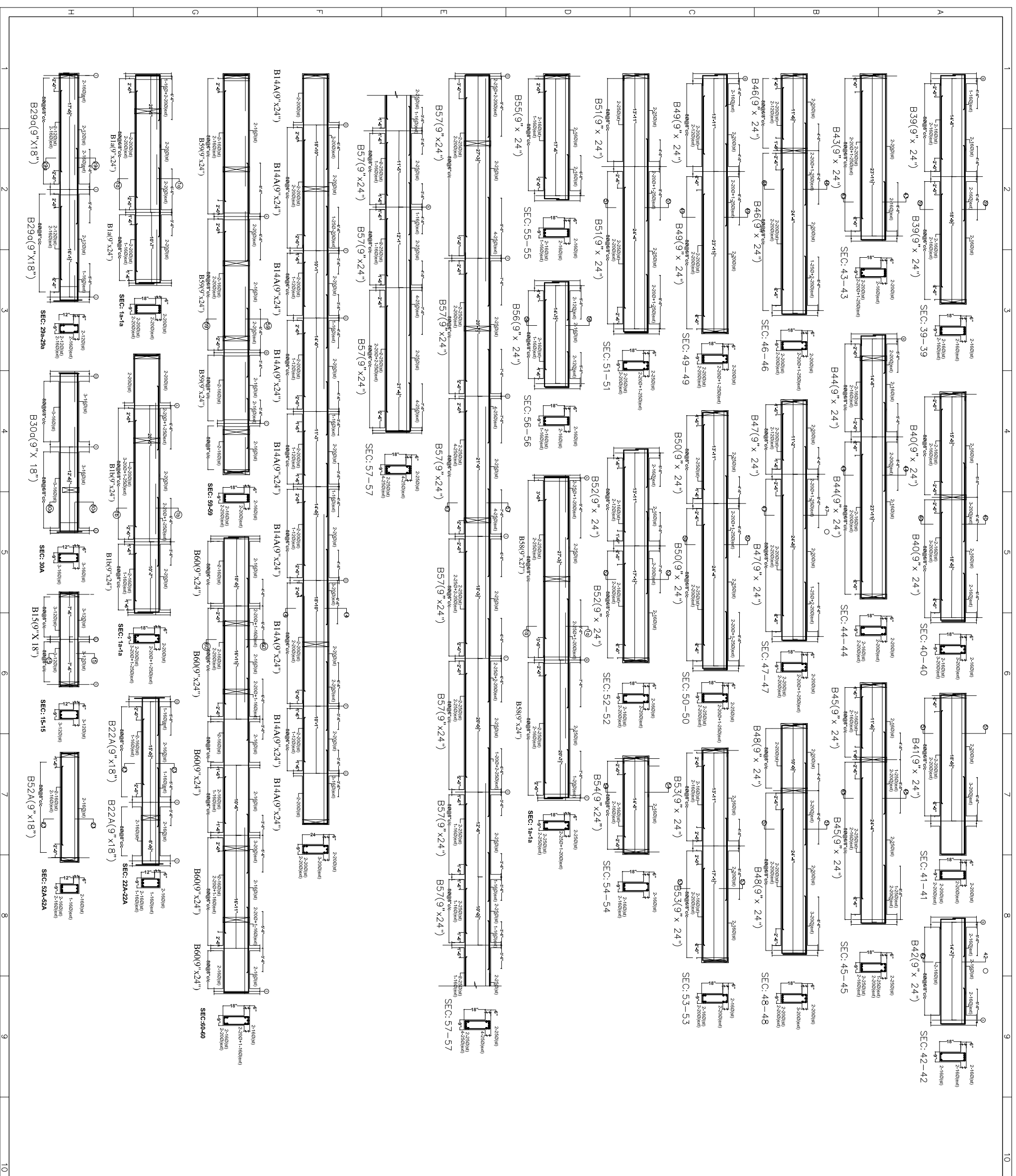


- GENERAL NOTES**
- USE M25 (1:1.5:2) GRADE CONCRETE FOR COLUMNS & M20 (1:1.5:3) FOR BEAMS & SLAB
 - USE FE415 GRADE TOR STEEL
 - PROVIDE CLEAR COVER OF 1.5" FOR COLUMNS, 1" FOR BEAMS & 3/4" FOR SLAB
 - PROVIDE 1" CAMBER AT FREE END FOR CANTILEVER BEAMS & SLABS.
 - IN SLAB EXTEND -VE STEEL UPTO 0.30L FROM FACE OF SUPPORT.
 - DO NOT PROVIDE EXTRA REINFORCEMENT AT SIMPLY SUPPORTS.
 - LAP LENGTH 48 D (D - IS THE DIA OF THE BAR) IN COMPRESSION.
 - LAP LENGTH 52 D (D - IS THE DIA OF THE BAR) IN TENSION.
 - ONLY FIGURED DIMENSIONS SHALL BE FOLLOWED.
 - ALL THE DIMENSIONS ARE IN INCHES & FEET.
 - DO NOT SCALE THE DRAWING.
 - REFER ARCHITECT DRAWING FOR CENTER LINE DIMENSIONS.



GOOD FOR REFERENCE

Owners & Developers

VISTA HOMES BLOCK - (F)
 #216, KUBERA TOWERS, ARCHITECTS & PROJECT CONSULTANTS
 Phone: 633551 (4lines) Fax: 40-27544058
 E-mail: info@modiprojects.com

Architects & Engineers:

KULKARNI CONSULTANTS
 STRUCTURAL ENGINEERS, ARCHITECTS & PROJECT CONSULTANTS
 CONTACT NOS:- 502233991, 6926635724, 09248363726

SCALE:	N.T.S
DATE:	15-11-2024
DRAWN:	PAVAN
CHECKED:	
APPROVED:	KULKARNI
TITLE:	CELLAR SLAB DETAILS (107-6") LVL
DWG. NO.	KC/WH/SO/F/
REV. NO.	0