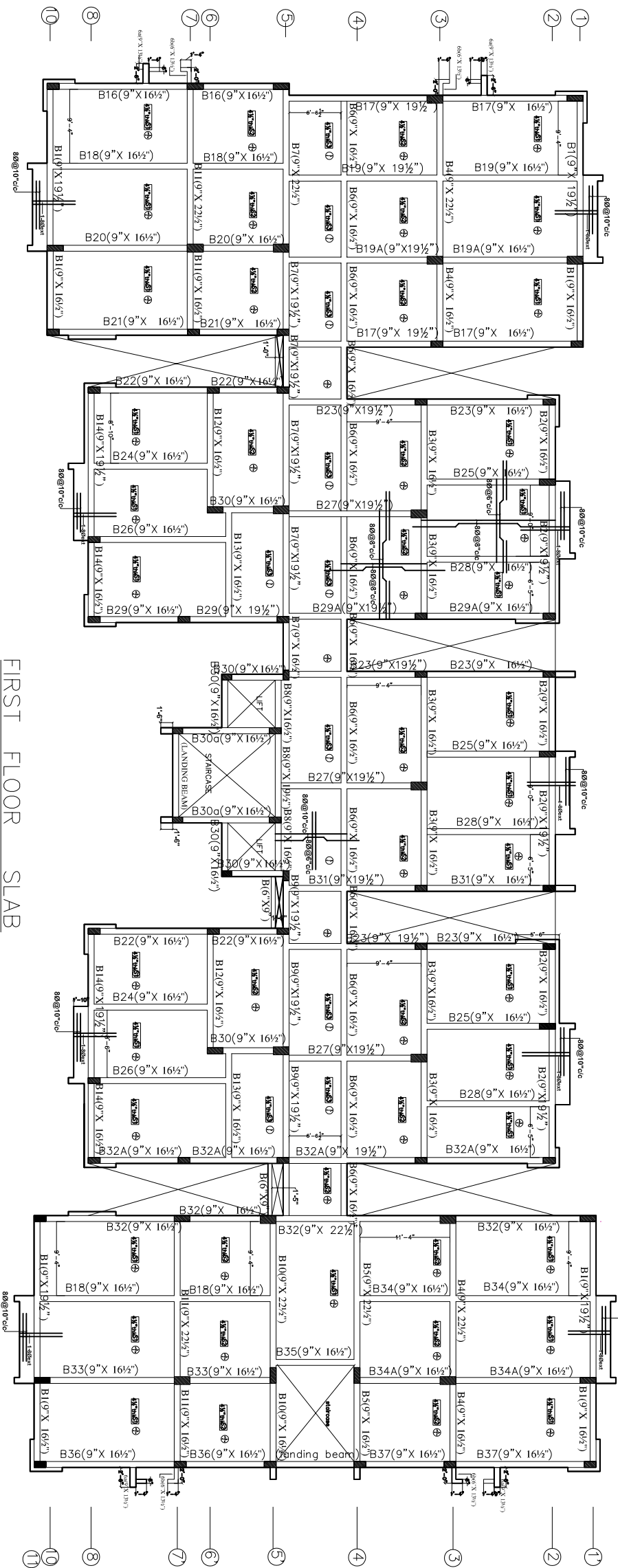
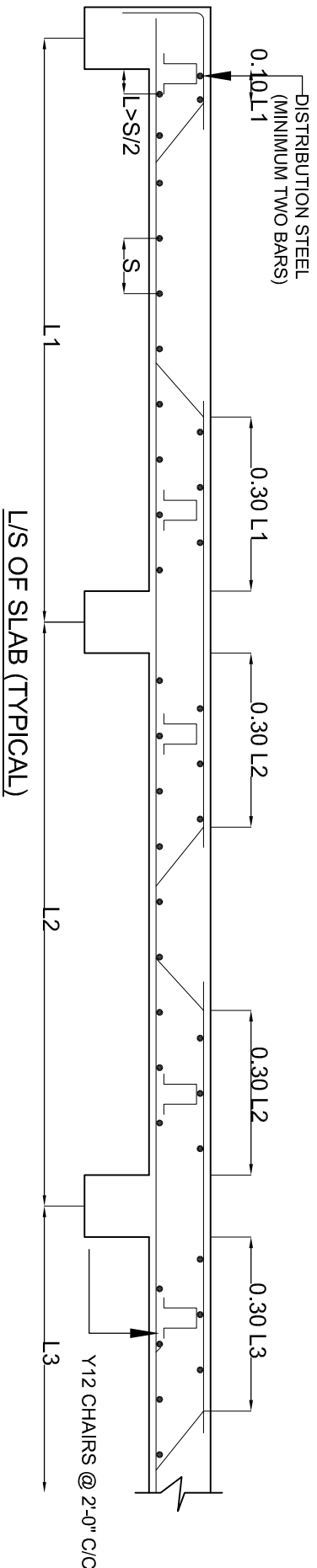


NOTE:  
 \* ALL SLABS ARE 4½" THK UNLESS AND UNTILL SPECIFIED  
 \* BEAM DEPTHS ARE INCLUDING SLAB THICKNESS  
 \* REFER ARCH. DRAWING FOR SLAB PROJECTION DIMENSIONS



FIRST FLOOR SLAB



**GENERAL NOTES**

- USE M25 (1:1.5:2) GRADE CONCRETE FOR COLUMNS & M20 (1:1.5:3) FOR BEAMS & SLAB
- USE FE415 GRADE TOR STEEL
- PROVIDE CLEAR COVER OF 1.5" FOR COLUMNS, 1" FOR BEAMS & 3/4" FOR SLAB
- PROVIDE 1" CAMBER AT FREE END FOR CANTILEVER BEAMS & SLABS.
- IN SLAB EXTEND -VE STEEL UPTO 0.30L FROM FACE OF SUPPORT.
- DO NOT PROVIDE EXTRA REINFORCEMENT AT SIMPLY SUPPORTS.
- LAP LENGTH 48 D (D - IS THE DIA OF THE BAR) IN COMPRESSION.
- LAP LENGTH 52 D (D - IS THE DIA OF THE BAR) IN TENSION.
- ONLY FIGURED DIMENSIONS SHALL BE FOLLOWED.
- ALL THE DIMENSIONS ARE IN INCHES & FEET.
- DO NOT SCALE THE DRAWING.
- REFER ARCHITECT DRAWING FOR CENTER LINE DIMENSIONS.

GOOD FOR REFERENCE



REV. NO.	DESCRIPTION	DATE
1		

Owners & Developers:  
 5-4-187 / 3&4, Soham mansion, II Floor, M.G. Road, Secunderabad-500003, Phone:6335551(4lines) Fax:040-27544058 E-mail: info@modiproperties.com

Architects & Engineers:  
**KULKARNI CONSULTANTS**  
 STRUCTURAL ENGINEERS, ARCHITECTS & PROJECT CONSULTANTS.  
 CONTACT: NO.52, 04023223893, 09246343724, 00246343723

SCALE:	N.T.S	VISTA HOMES BLOCK - (F)
DATE:	15-10-13	TITLE: FIRST FLOOR SLAB (3hd)
DRAWN:	PAWAN	CHK. NO. / SD. / F.
CHECKED:	KULKARNI	REV. NO.
APPROVED:		0