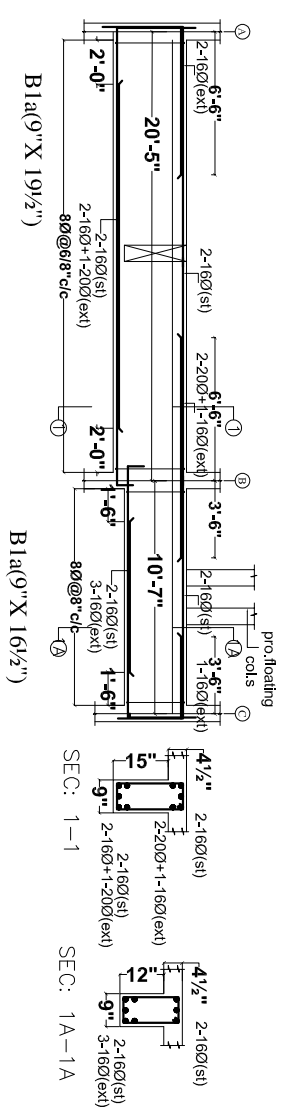
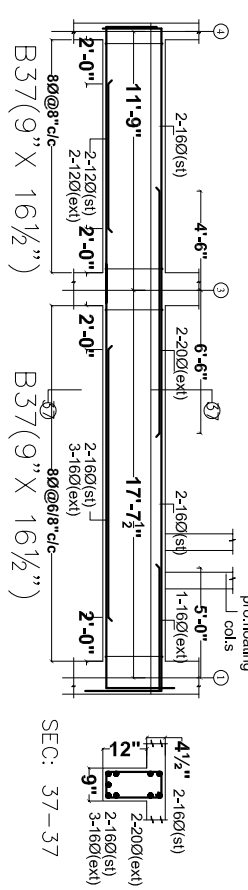
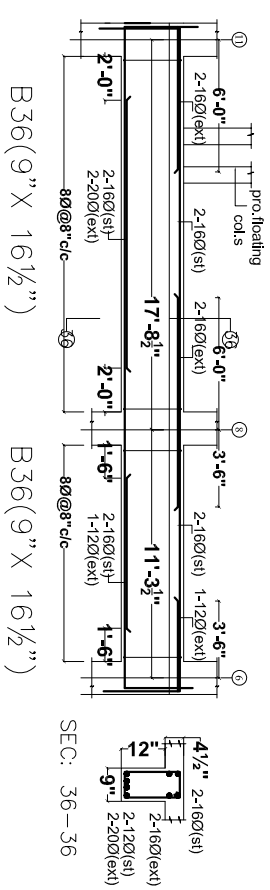
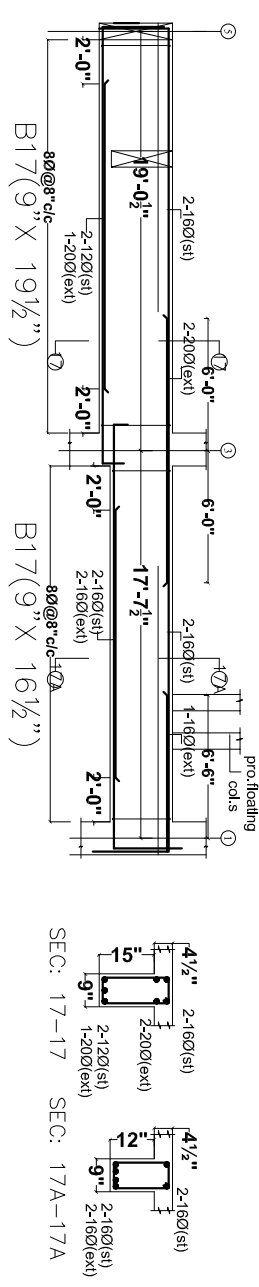
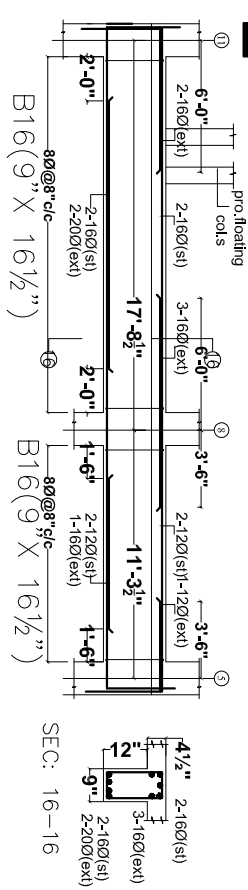
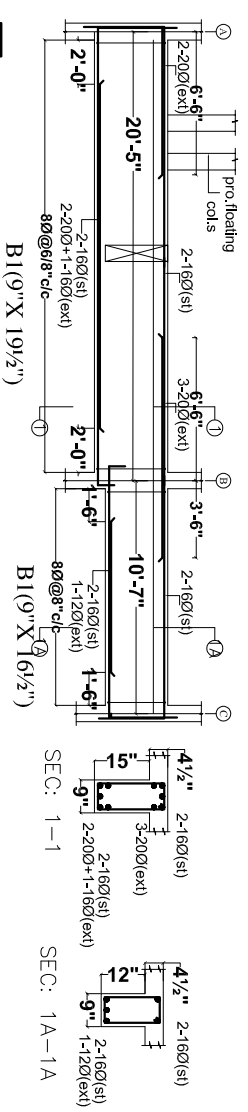
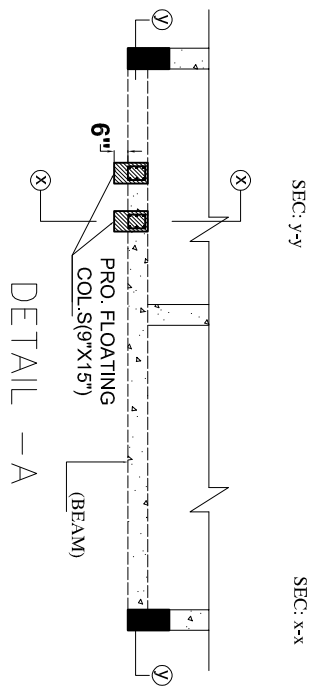
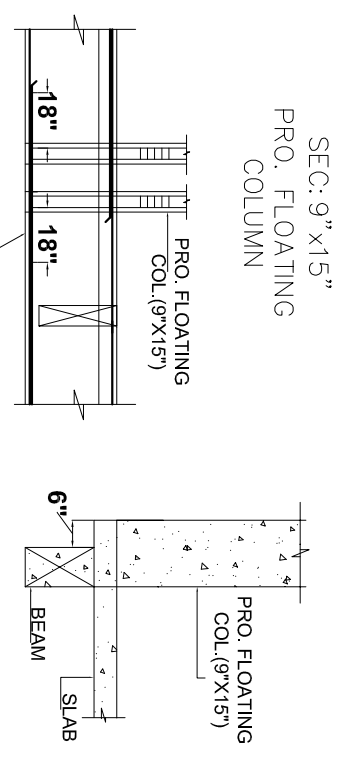
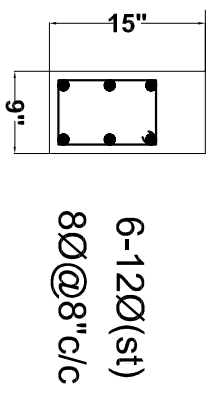


- GENERAL NOTES**
- USE M25 (1:1.5:2) GRADE CONCRETE FOR COLUMNS & M20 (1:1.5:3) FOR BEAMS & SLAB
 - USE FE415 GRADE TOR STEEL
 - PROVIDE CLEAR COVER OF 1.5" FOR COLUMNS, 1" FOR BEAMS & 3/4" FOR SLAB
 - PROVIDE 1" CAMBER AT FREE END FOR CANTILEVER BEAMS & SLABS.
 - IN SLAB EXTEND -VE STEEL UPTO 0.30L FROM FACE OF SUPPORT.
 - DO NOT PROVIDE EXTRA REINFORCEMENT AT SIMPLY SUPPORTS.
 - LAP LENGTH 48 D (D - IS THE DIA OF THE BAR) IN COMPRESSION.
 - LAP LENGTH 52 D (D - IS THE DIA OF THE BAR) IN TENSION.
 - ONLY FIGURED DIMENSIONS SHALL BE FOLLOWED.
 - ALL THE DIMENSIONS ARE IN INCHES & FEET.
 - DO NOT SCALE THE DRAWING.
 - REFER ARCHITECT DRAWING FOR CENTER LINE DIMENSIONS.



GOOD FOR REFERENCE

REV. NO.	DESCRIPTION	DATE
1		24-05-13

Owners & Developers:
 5-4-187 / 3&4 Soham mansion, II Floor,
 M.G. Road, Secunderabad-500003,
 Phone:6335551(4lines) Fax:040-27544058
 E-mail: info@modiproperties.com

Architects & Engineers:
KULKARNI CONSULTANTS
 STRUCTURAL ENGINEERS, ARCHITECTS & PROJECT CONSULTANTS
 CONTACT: MO:92 9823223893, 99284634724, 09246343225

SCALE: N.T.S.	VISTA HOMES BLOCK - (F)
DATE: 28-4-13	TITLE: FOURTH FLOOR BEAM
DRAWN: PAVANI	SECTION DETAILS
CHECKED: KULKARNI	DKC. NO. KC/44/SD/F/
APPROVED:	SH. NO.2
	REV. NO. 0