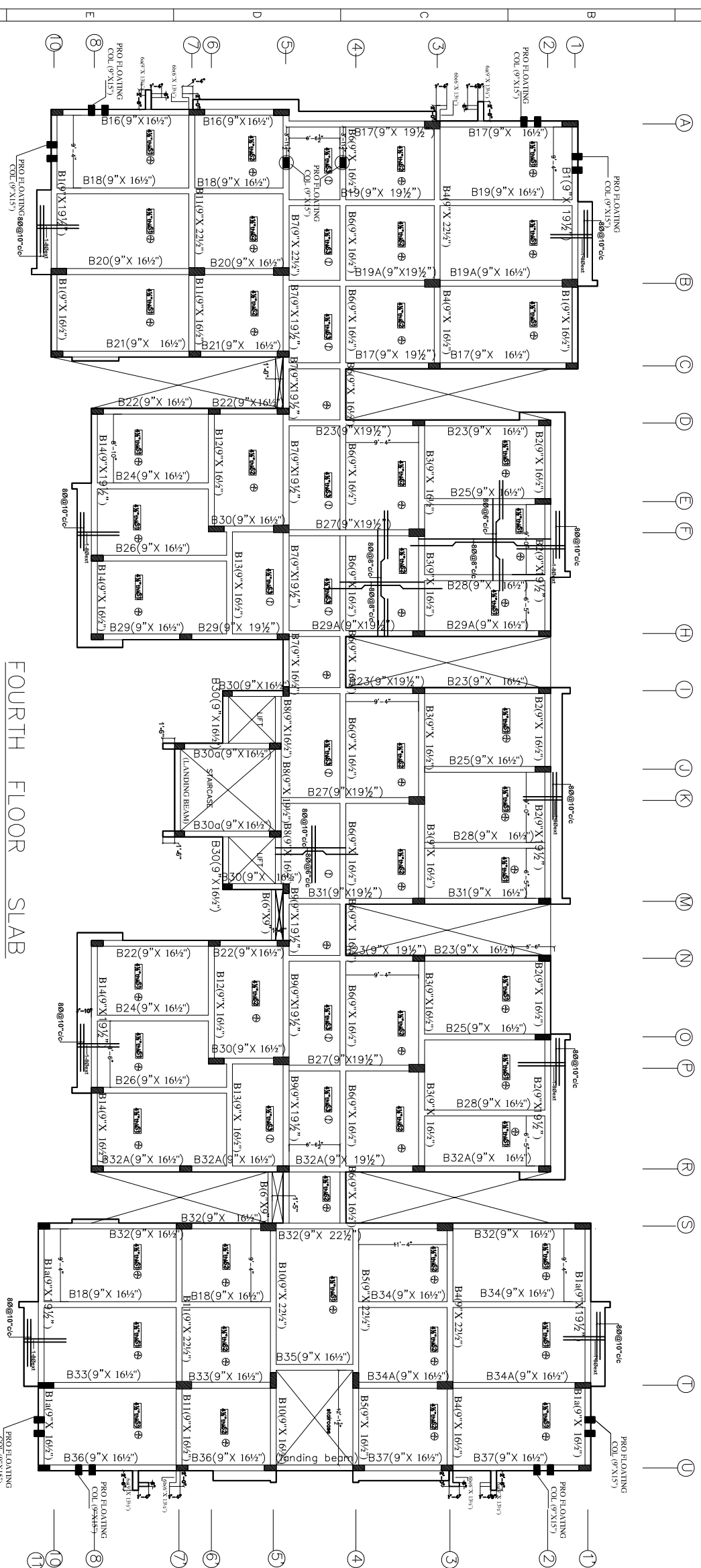
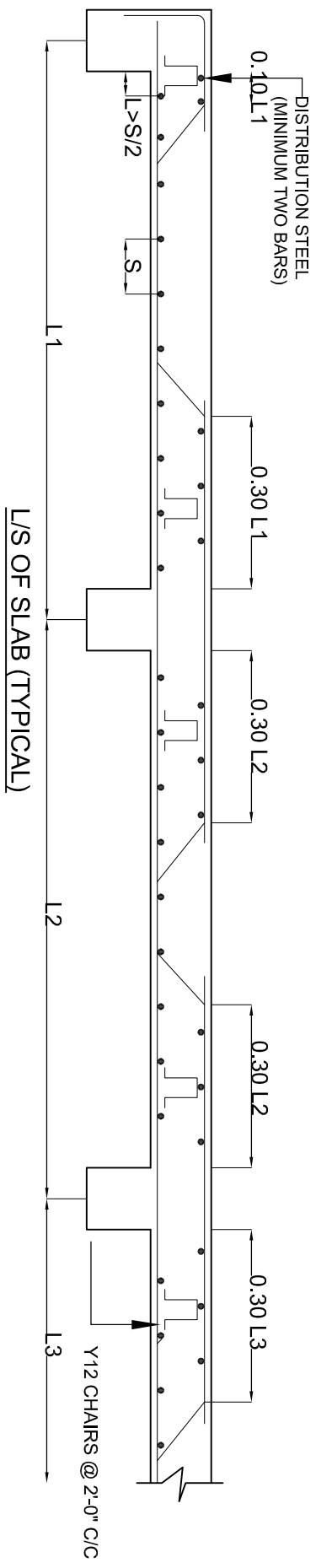


NOTE:
 * ALL SLABS ARE 4½" THK UNLESS AND UNTILL SPECIFIED
 * BEAM DEPTHS ARE INCLUDING SLAB THICKNESS
 * REFER ARCH DRAWING FOR SLAB PROJECTION DIMENSIONS



FOURTH FLOOR SLAB



- GENERAL NOTES**
1. USE M25 (1:1.5:2) GRADE CONCRETE FOR COLUMNS & M20 (1:1.5:3) FOR BEAMS & SLAB
 2. USE FE415 GRADE TOR STEEL.
 3. PROVIDE CLEAR COVER OF 1.5" FOR COLUMNS , 1"FOR BEAMS & 3/4" FOR SLAB
 4. PROVIDE 1" CAMBER AT FREE END FOR CANTILEVER BEAMS & SLABS.
 5. IN SLAB EXTEND -VE STEEL UP TO 0.30L FROM FACE OF SUPPORT.
 6. DO NOT PROVIDE EXTRA REINFORCEMENT AT SIMPLY SUPPORTS.
 7. LAP LENGTH 48 D (D - IS THE DIA OF THE BAR) IN COMPRESSION.
 8. LAP LENGTH 52 D (D - IS THE DIA OF THE BAR) IN TENSION.
 9. ONLY FIGURED DIMENSIONS SHALL BE FOLLOWED.
 10. ALL THE DIMENSIONS ARE IN INCHES & FEET.
 11. DO NOT SCALE THE DRAWING.
 12. REFER ARCHITECT DRAWING FOR CENTER LINE DIMENSIONS.



GOOD FOR REFERENCE

REV. NO.	DESCRIPTION	DATE
1		

Owners & Developers:
 5-4-187 / 3&4, Solaiah mansion, II Floor,
 M.G. Road, Secunderabad-500003,
 Phone: 65355511 (4lines) Fax: 040-27544058
 E-mail: info@mcd4properties.com

Architects & Engineers:
KULKARNI CONSULTANTS
 STRUCTURAL ENGINEERS, ARCHITECTS & PROJECT CONSULTANTS
 CONTACT NOS:- 0802322891, 09260343724, 09260343720.

SCALE: N.T.S.
 DATE: 15-10-13
 DRAWN: PAVANI
 CHECKED: KULKARNI
 APPROVED: KULKARNI

VISTA HOMES BLOCK - (F)
 TITLE: FOURTH FLOOR SLAB (6th)
 DWG. NO. KC/NA/SD/F/
 REV. No. 0