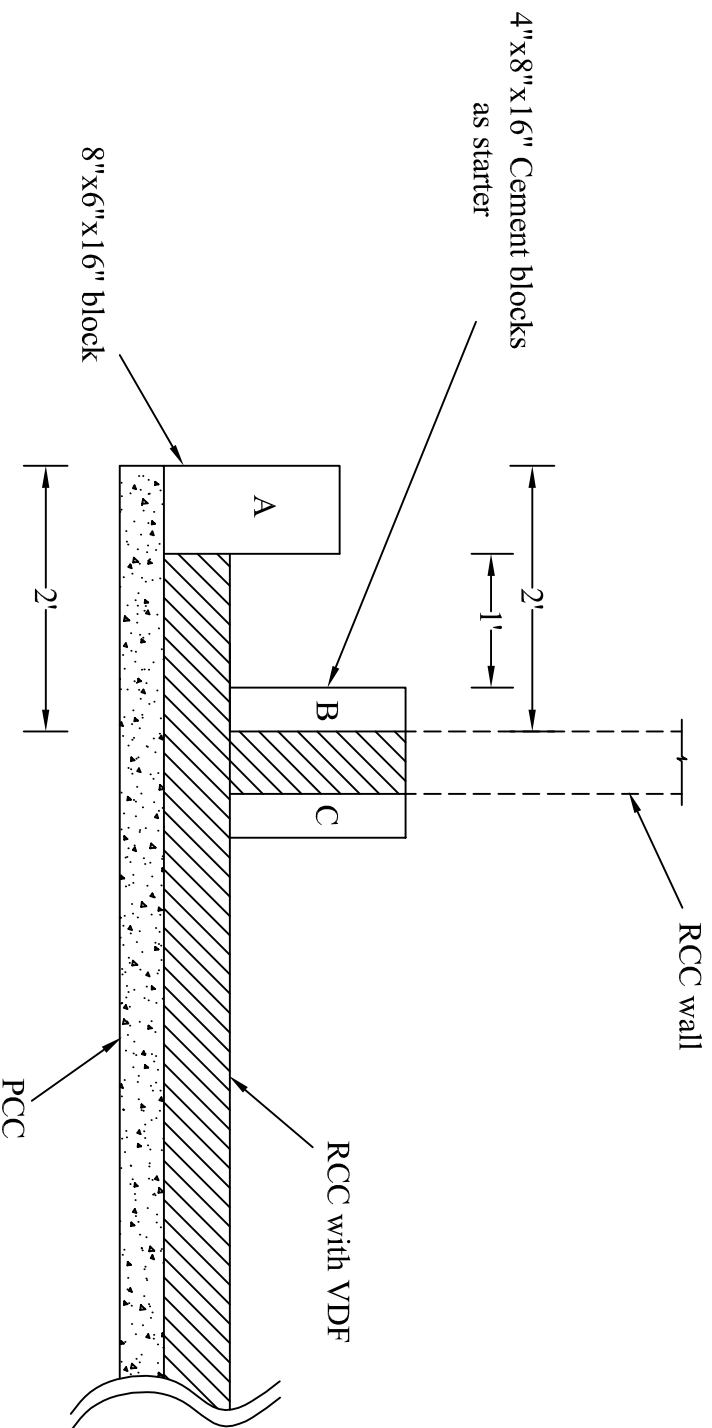


Note: Depth of pool from FFL to FFL cannot exceed 4'-3"  
(Keep between 3'-9" to 4'-3")




Step 1: Lay PCC 30" more than the pool dimensions.

Step 2: Lay block A.

Step 3: Lay CC on floor with VDF, leave rods for RCC wall.

Step 4: Cast a 8" starter with blocks B & C. Clean joint and apply bonding agent.

Step 5: Raise RCC wall with blocks or centering plates.

Description		Direction		Date :		Promoted by	
STANDARD SWIMMING POOL PLAN FOR RCC WORK				22.08.17		Modi Properties Pvt.Ltd.	
				Approved By : Prepared By :		Soham Modi M.Nagalaxmi	
				Scale :		N.T.S	
						Phone: +91-40-663335551	