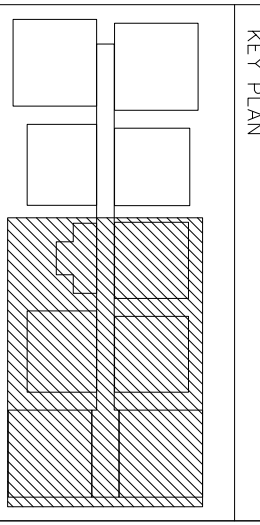


- NOTES**
1. ALL THE DIMENSIONS ARE IN FPS SYSTEM.
  2. ONLY FIGURED DIMENSIONS SHALL BE FOLLOWED, DO NOT SCALE THE DRAWING.
  3. THIS SHEET SUPERSEDES ALL PREVIOUSLY REVISED ARCHITECTURAL DRAWING OF SAME NUMBERS
  4. ALL LARGE SCALE DRAWINGS SHALL SUPERSEDE THE SMALL SCALE ONES.
  5. ANY DISCREPANCY IN THE DRAWINGS SHALL BE BROUGHT TO THE NOTICE OF THE CONSULTANTS, BEFORE EXECUTION OF WORK.



REV. NO.	DESCRIPTION	DATE

**GOOD FOR CONSTRUCTION**

**Owners & Developers:**  
**MODI PROPERTIES & INVESTMENTS**  
 5-4-187 / 3&4, Sohani mansion, 11 Floor,  
 Plot No. 866335551 (d/line) F-09060-2/744058  
 Phone: 966335551 (d/line) Fax: 09060-2/744058  
 E-mail: info@modiproperties.com

**Architects & Engineers:**  
  
**KULKARNI CONSULTANTS**  
 STRUCTURAL ENGINEERS, ARCHITECTS & PROJECT CONSULTANTS  
 #216, KUBERA TOWERS, NARAYAN GUDA, PUNE BARAD.  
 CONTACT NOS.: 8402223891, 09246343224, 09246343226

SCALE:	N.T.S	VISTA HOMES
DATE:	26-12-13	GROUND FLOOR
DRAWN:		SLAB PROJECTION
CHECKED:		
APPROVED:	KULKARNI	
DWG. NO.:	KC/WH/AD/B/F/84	REV. NO.: