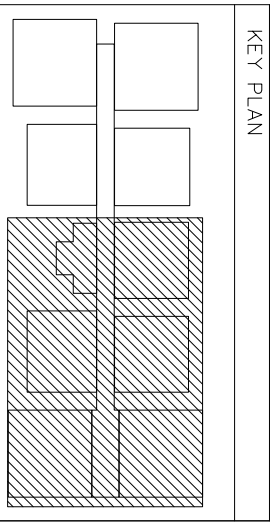


- NOTES**
1. ALL THE DIMENSIONS ARE IN FPS SYSTEM.
  2. ONLY FIGURED DIMENSIONS SHALL BE FOLLOWED, DO NOT SCALE THE DRAWING.
  3. THIS SHEET SUPERSEDES ALL PREVIOUSLY REVISED ARCHITECTURAL DRAWING OF SAME NUMBERS
  4. ALL LARGE SCALE DRAWINGS SHALL SUPERSEDE THE SMALL SCALE ONES.
  5. ANY DISCREPANCY IN THE DRAWINGS SHALL BE BROUGHT TO THE NOTICE OF THE CONSULTANTS, BEFORE EXECUTION OF WORK.



**SCHEDULE OF JOINERY:**

I. DOORS		S.N.O	SIZE
1.	MD	3.6'x7.0"	
2.	D	3.0'x7.0"	
3.	D1	2.6'x7.0"	
4.	FD	5.3'x7.0"	
5.	FD1	4.9'x7.0"	
6.	FD2	4.6'x7.0"	
II. WINDOWS			
5.	W	6.0'x4.0"	
6.	W1	4.0'x4.0"	
7.	KW	4.0'x3.0"	
8.	KW1	2.9'x3.0"	
III. VENTILATORS			
9.	V	2.0'x2.0"	

**GOOD FOR CONSTRUCTION**

**Owners & Developers:**  
**MODI PROPERTIES & INVESTMENTS**  
 5-4-187 / 3&4, Sohani mansion, 11 Floor,  
 Plot No. 66335551 (d/line) Fm0900-07544058  
 E-mail info@modiproperties.com

**Architects & Engineers:**  
**KULKARNI CONSULTANTS**  
 STRUCTURAL ENGINEERS, ARCHITECTS & PROJECT CONSULTANTS  
 #216, KUBERA TOWERS, NARAYAN GUDA, HOBBARAD.  
 CONTACT NOS.: 8402223891, 09546343224, 09246343226

**DATE:** 26-12-13  
**TITLE:** GROUND FLOOR WORKING PLAN

**SCALE:** N.T.S  
**DWG. NO.:** K/C/AH/AD/B/F/144/00  
**REV. NO.:** 00

**REV. NO.** 01  
**DESCRIPTION:** EAST FACING 2-BED ROOM FLAT BRICK WORK REVIEWED  
**DATE:** 24-07-13

**APPROVED:** KULKARNI