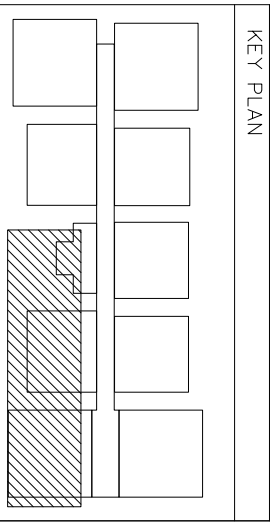




- NOTES**
1. ALL THE DIMENSIONS ARE IN FPS SYSTEM.
  2. ONLY FIGURED DIMENSIONS SHALL BE FOLLOWED, DO NOT SCALE THE DRAWING.
  3. THIS SHEET SUPERSEDES ALL PREVIOUSLY REVISED ARCHITECTURAL DRAWING OF SAME NUMBERS
  4. ALL LARGE SCALE DRAWINGS SHALL SUPERSEDE THE SMALL SCALE ONES.
  5. ANY DISCREPANCY IN THE DRAWINGS SHALL BE BROUGHT TO THE NOTICE OF THE CONSULTANTS, BEFORE EXECUTION OF WORK.



**OWNERS & DEVELOPERS:**  
**GOOD FOR CONSTRUCTION**

**Architects & Engineers:**  
**KULKARNI CONSULTANTS**  
 STRUCTURAL ENGINEERS, ARCHITECTS & PROJECT CONSULTANTS  
 #216, KUBERA TOWERS, NARAYAN GUDA, HOSUR ROAD,  
 COIMBATORE. (INDIA) 09343332891, 09343332724, 09343332726

**MOY PROPRIETORS & INVESTMENTS**  
 #147/7&A, 5th Floor, 1st Stage,  
 M.G. Road, Secunderabad-500003.  
 Phone:6335511(direct) Fax:630-27544058  
 Email: info@moypartners.com

REV. NO.	DESCRIPTION	DATE
01	FLOOR HEIGHTS ARE CHANGED	24-07-13

**Architects & Engineers:**  
**KULKARNI CONSULTANTS**  
 STRUCTURAL ENGINEERS, ARCHITECTS & PROJECT CONSULTANTS  
 #216, KUBERA TOWERS, NARAYAN GUDA, HOSUR ROAD,  
 COIMBATORE. (INDIA) 09343332891, 09343332724, 09343332726

**OWNERS & DEVELOPERS:**  
**GOOD FOR CONSTRUCTION**

**MOY PROPRIETORS & INVESTMENTS**  
 #147/7&A, 5th Floor, 1st Stage,  
 M.G. Road, Secunderabad-500003.  
 Phone:6335511(direct) Fax:630-27544058  
 Email: info@moypartners.com

**SCALE:** N.T.S.

**DATE:** 26-12-13

**DRAWN BY:** [Blank]

**CHECKED BY:** KULKARNI

**APPROVED BY:** [Blank]

**TITLE:** SOUTH SIDE ELEVATION

**DWG. NO.:** C/NH/AD/B/F/22

**REV. NO.:** 00