

- NOTE:**
1. Do not scale this drawing follow figured dimensions
 2. All dimensions are in feet n inches only
 3. Use vibrated reinforced concrete of mix M20 for Beams
 4. Use hysd bars of fe -500
 5. Lap lengths recommended for reinforcement
 6. This building is designed for Cellor,Ground+four floors or
 7. Concrete shall be vibrated for obtaining optimum densit
 8. Provide clear cover for Beams =25mm,
The cover shall be provided to all reinforcement's inclu stirrups wired cover blocks of same grade of concrete cured.
 9. Stirrups should have standard hook as per sp-34.
 10. Correlate with the relevant drawings for necessary details
 11. Any drawing should be read in conjunction with relevant architectural drawing.
 12. All dimensions shall be verified by the engineer in charge laying concrete with respect to Architectural dwg.
 13. The provisions made in is: 456-2000 and sp-34 and otl codes should be strictly adhered during execution .

BLOCK - E

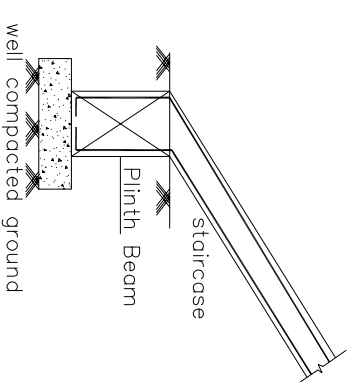
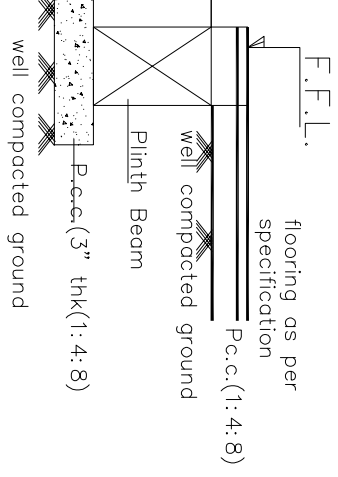
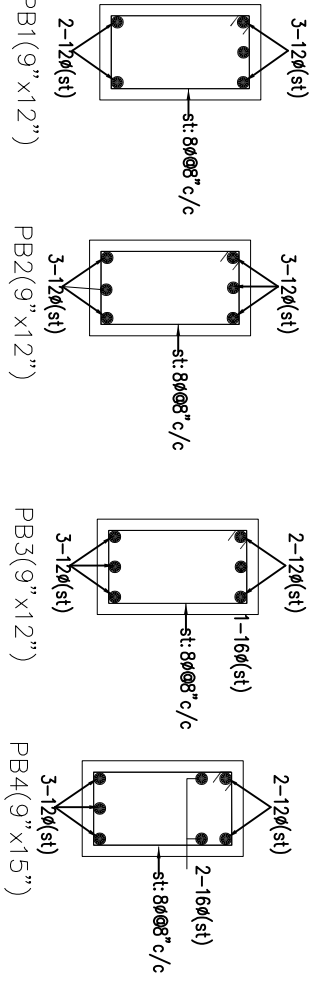
BLOCK - D

BLOCK - G

BLOCK - F

SECTION AT Y-Y

SECTION AT X-X



GOOD FOR CONSTRUCTION



Architects & Engineers:
KULKARNI CONSULTANTS
 STRUCTURAL ENGINEERS, ARCHITECTS & PROJECT CONSULTANTS
 CONTACT NO'S:- 04023223891, 09246343274, 09246343270.

Owners & Developers:
 5-4-187 /384, Soham mansion, II Floor,
 M.G. Road, Secunderabad-500003.
 Phone:6335511(4lines), Fax:040-27544058
 E-mail: info @modiproperties.com

SCALE:	M:25	VISTA HOMES BLOCK (G)
DATE:	30-07-18	TITLE:
DRAWN:	Basha	CHECKED:
CHECKED:	Samson	APPROVED:
APPROVED:	KULKARNI	DWG. NO.
		KC/NH/SD/G/4
		REV. No.
		0