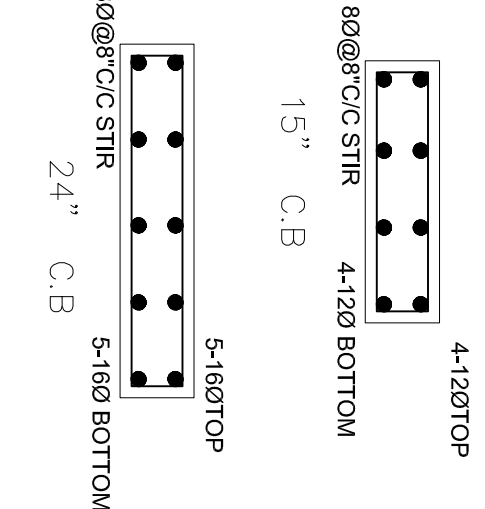
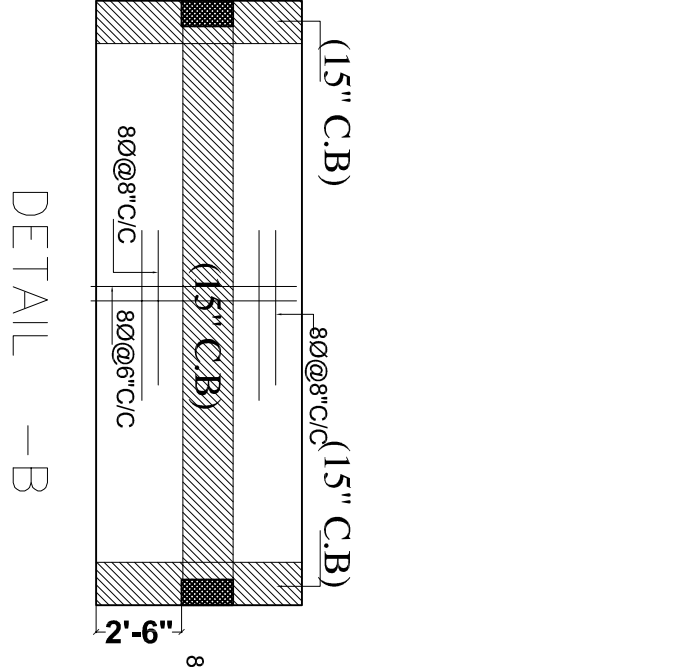
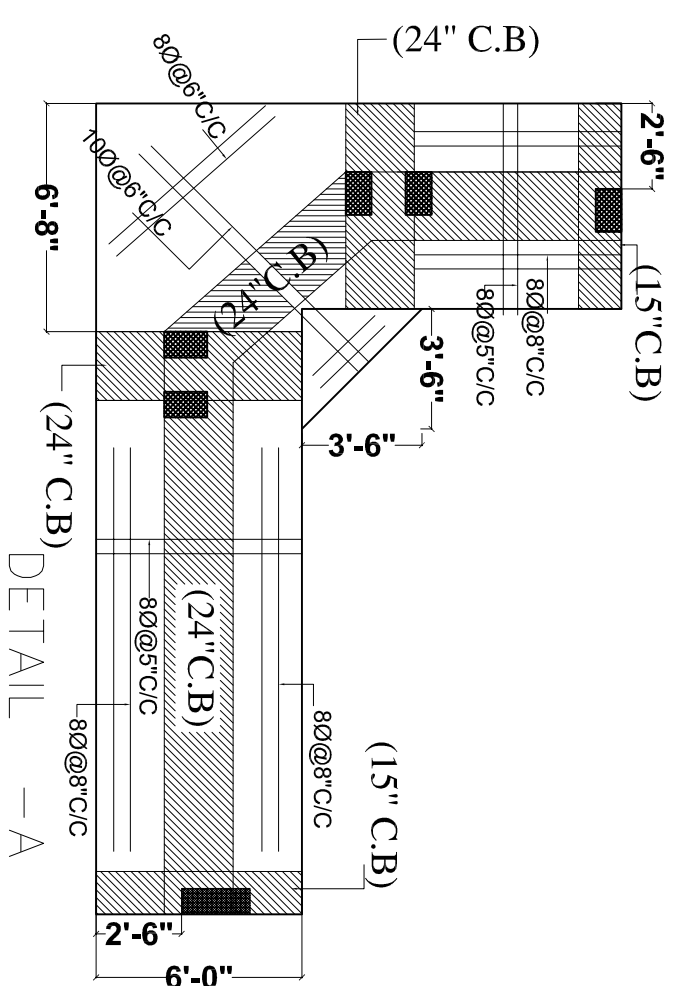


ELEVATED SLAB



- GENERAL NOTES**
- USE M25 (1:1.5:2) GRADE CONCRETE FOR COLUMNS & M20 (1:1.5:3) FOR BEAMS & SLAB
  - USE FE415 GRADE TOR STEEL
  - PROVIDE CLEAR COVER OF 1.5" FOR COLUMNS, 1" FOR BEAMS & 3/4" FOR SLAB
  - PROVIDE 1" CAMBER AT FREE END FOR CANTILEVER BEAMS & SLABS.
  - IN SLAB EXTEND -VE STEEL UPTO 0.30L FROM FACE OF SUPPORT.
  - DO NOT PROVIDE EXTRA REINFORCEMENT AT SIMPLY SUPPORTS.
  - LAP LENGTH 48 D (D - IS THE DIA OF THE BAR) IN COMPRESSION.
  - LAP LENGTH 52 D (D - IS THE DIA OF THE BAR) IN TENSION.
  - ONLY FIGURED DIMENSIONS SHALL BE FOLLOWED.
  - ALL THE DIMENSIONS ARE IN INCHES & FEET.
  - DO NOT SCALE THE DRAWING.
  - REFER ARCHITECT DRAWING FOR CENTER LINE DIMENSIONS.

GOOD FOR REFERENCE



REV. NO.	DESCRIPTION	DATE
1		

**Owners & Developers:**  
5-4-187 / 3&4 Soham mansion, II Floor, M.G. Road, Secunderabad-500003, Phone:633551(4lines) Fax:040-27544058 E-mail:info@modiprojects.com

**Architects & Engineers:**  
**KULKARNI CONSULTANTS**  
STRUCTURAL ENGINEERS, ARCHITECTS & PROJECT CONSULTANTS  
CONTACT NO:52- 04023223893, 09246343224, 09246343225

**SCALE:** N.T.S  
**DATE:** 15-04-13  
**DRAWN BY:** PAVANI  
**CHECKED BY:** KULKARNI  
**APPROVED BY:** KULKARNI

**VISTA HOMES BLOCK - (H)**  
**TERRACE ELEVATION SLAB**

**DWG. NO.:** KC/44/SD/F/  
**REV. NO.:** 0