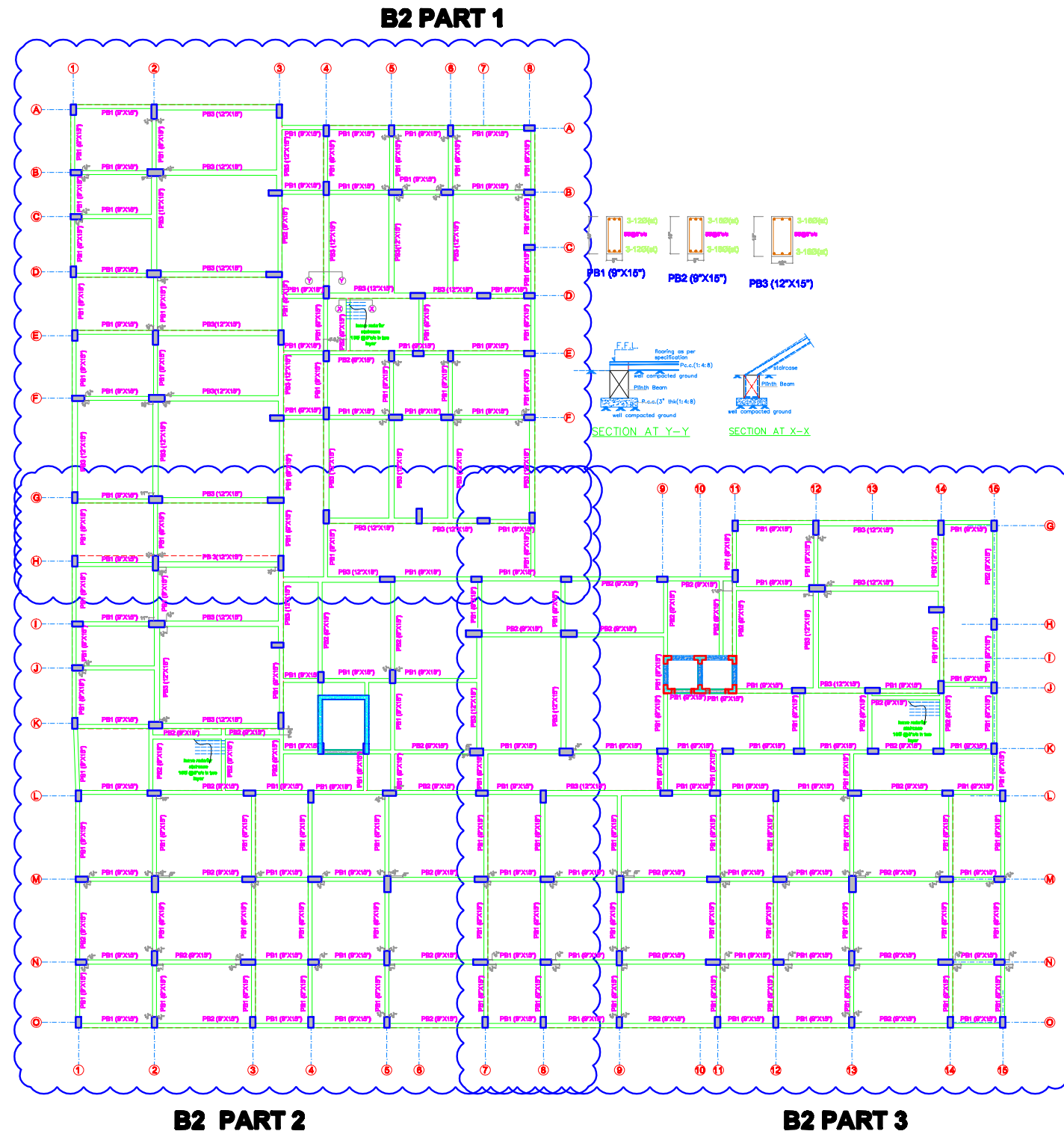


GENERAL NOTES

1. USE M25 (1:1.5:2) GRADE CONCRETE FOR BEAMS & SLAB
2. USE FE500 GRADE TOR STEEL.
3. PROVIDE CLEAR COVER OF 1.5" FOR COLUMNS , 1"FOR BEAMS & 3/4" FOR SLAB
4. PROVIDE 1" CAMBER AT FREE END FOR CANTILEVER BEAMS & SLABS.
5. IN SLAB EXTEND -VE STEEL UPTO 0.30L FROM FACE OF SUPPORT.
6. DO NOT PROVIDE EXTRA REINFORCEMENT AT SIMPLY SUPPORTS.
7. LAP LENGTH 48 D (D- IS THE DIA OF THE BAR) IN COMPRESSION.
8. LAP LENGTH 52 D (D- IS THE DIA OF THE BAR) IN TENSION.
9. ONLY FIGURED DIMENSIONS SHALL BE FOLLOWED.
10. ALL THE DIMENSIONS ARE IN INCHES & FEET.
11. DO NOT SCALE THE DRAWING.
12. REFER ARCHITECT DRAWING FOR CENTER LINE DIMENSIONS.



PLINTH BEAM LAYOUT

Owners & Developers:	5-4-187 /3&4, Soham mansion, II Floor, M.G. Road, Secunderabad-500003. Phone: 8335551 (4lines) Fax: 040-27544058 E-mail: info@modiproperties.com
Architects & Engineers:	KULKARNI CONSULTANT'S STRUCTURAL ENGINEERS, ARCHITECTS & PROJECT CONSULTANTS #216, KUBERA TOWER'S, NARAYAN GUDA, HYDERABAD. CONTACT NO'S:- 8402223891, 89246343724, 89246343728.
SCALE:	N.T.S
DATE:	04-05-2019
DRAWN:	SAURABH
DESIGNED:	SANTOSH
CHECKED:	
APPROVED:	KULKARNI
MAYFLOWER PLATINUM (A)	
TITLE:	PLINTH BEAM LAYOUT -1
DWG. NO.	SYS/MP/SD/B/4
REV. No.	0