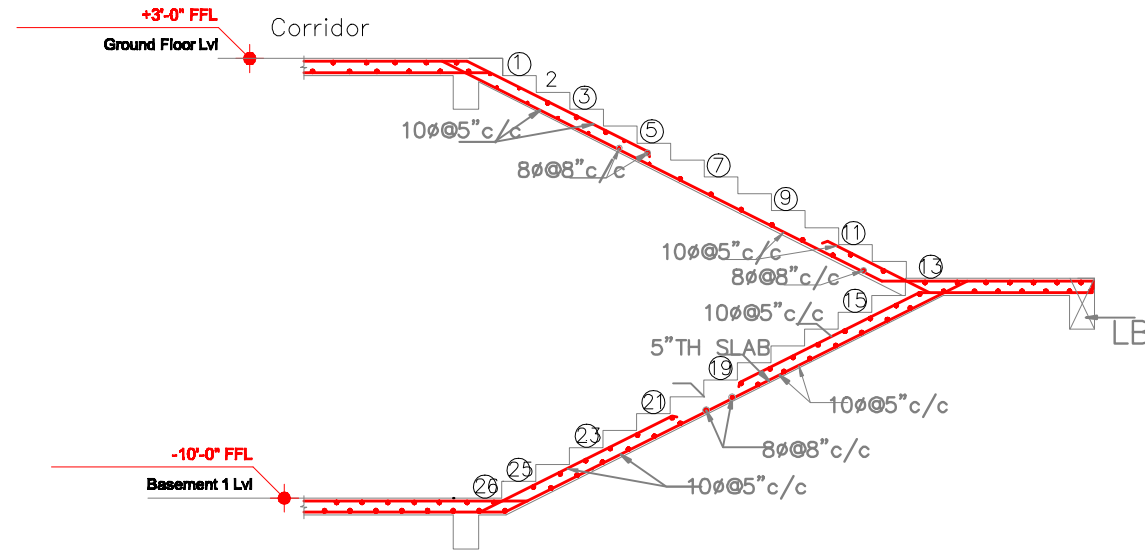
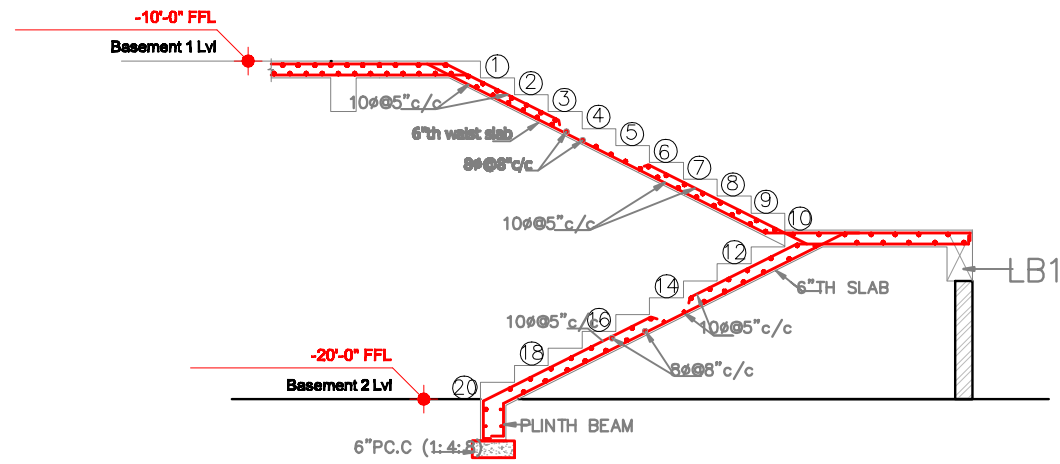


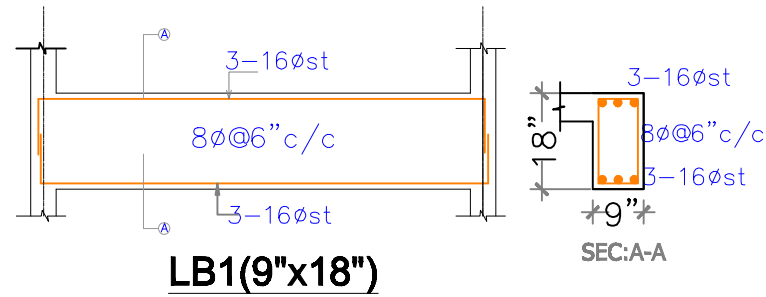
NOTE:

1. USE M25 (1:1.5:2) GRADE CONCRETE FOR BEAMS & SLAB
2. USE FE500 GRADE TOR STEEL.
3. PROVIDE CLEAR COVER OF 1.5" FOR COLUMNS, 1" FOR BEAMS & 3/4" FOR SLAB
4. PROVIDE 1" CAMBER AT FREE END FOR CANTILEVER BEAMS & SLABS.
5. IN SLAB EXTEND -VE STEEL UPTO 0.30L FROM FACE OF SUPPORT.
6. DO NOT PROVIDE EXTRA REINFORCEMENT AT SIMPLY SUPPORTS.
7. LAP LENGTH 48 D (D- IS THE DIA OF THE BAR) IN COMPRESSION.
8. LAP LENGTH 52 D (D- IS THE DIA OF THE BAR) IN TENSION.
9. ONLY FIGURED DIMENSIONS SHALL BE FOLLOWED.
10. ALL THE DIMENSIONS ARE IN INCHES & FEET.
11. DO NOT SCALE THE DRAWING.
12. REFER ARCHITECT DRAWING FOR CENTER LINE DIMENSIONS.

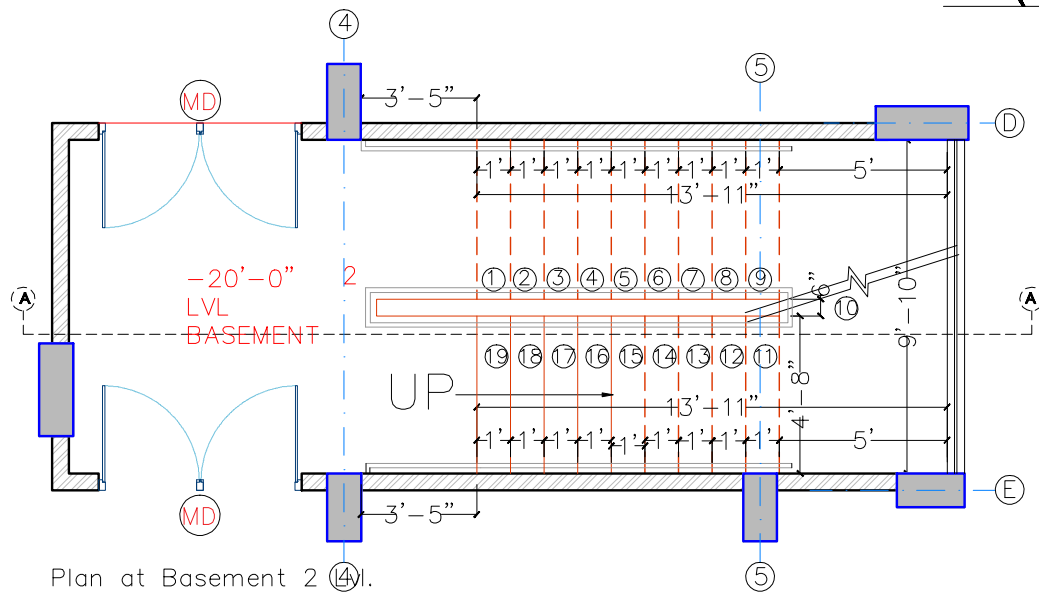


SECTION A-A

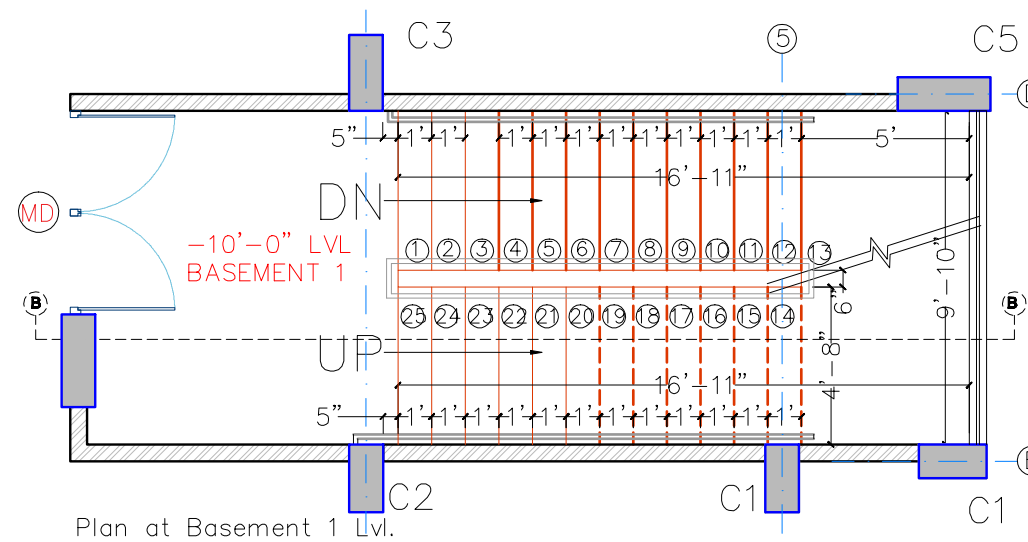
SECTION B-B



LB1(9"x18")



Plan at Basement 2 Lvl.



Plan at Basement 1 Lvl.

BS1

Client	MODI PROPERTIES & INVESTMENTS PVT.LTD
Project	MAYFLOWER PLATINUM(A)
STRUCTURAL CONSULTANT	KULKARNI CONSULTANTS STRUCTURAL ENGINEERS, ARCHITECTS & PROJECT CONSULTANTS G-24, KUNDELA TOWER, MIDC PHASE II, PUNE-411 004, INDIA
DATE	06-07-2019
DRAWN BY	SAHANI
DESIGN	SAHANI
APPROVED	SAHANI
MAYFLOWER PLATINUM(A)	
TITLE	STAIRCASE (BS1) R.C.C DETAIL
DWG. NO.	SAN/MP/SD/5
REV. No.	0