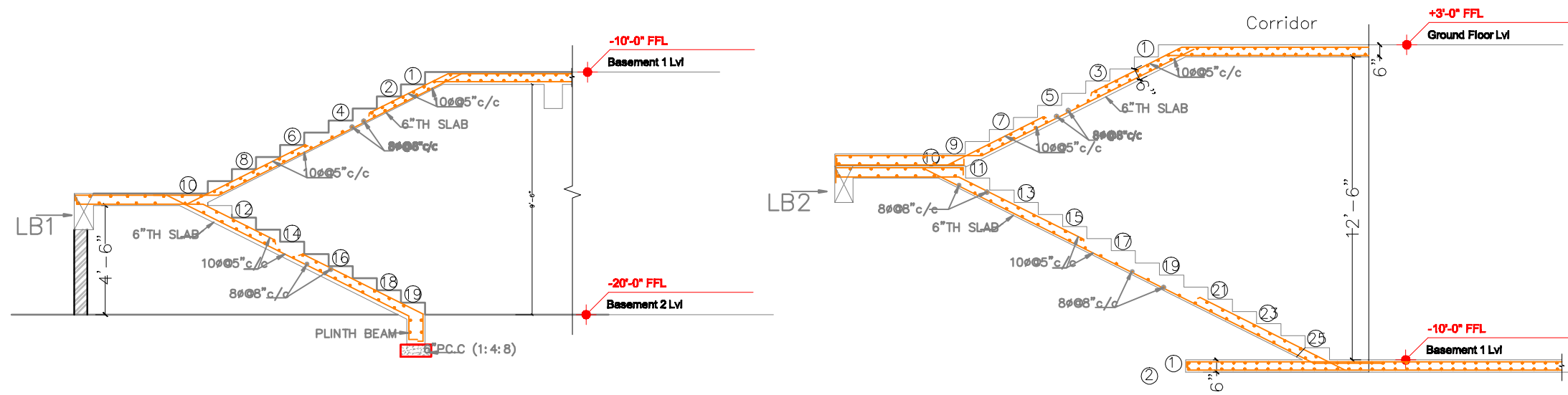
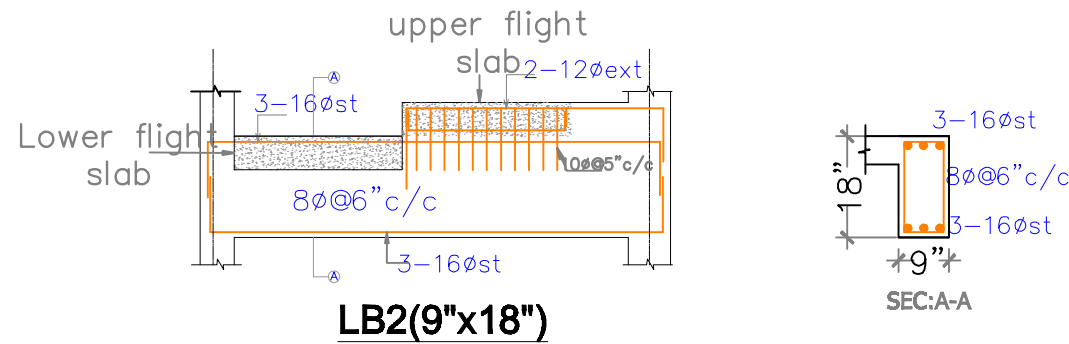
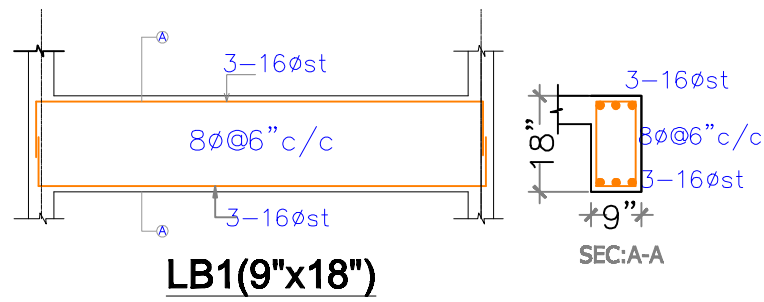


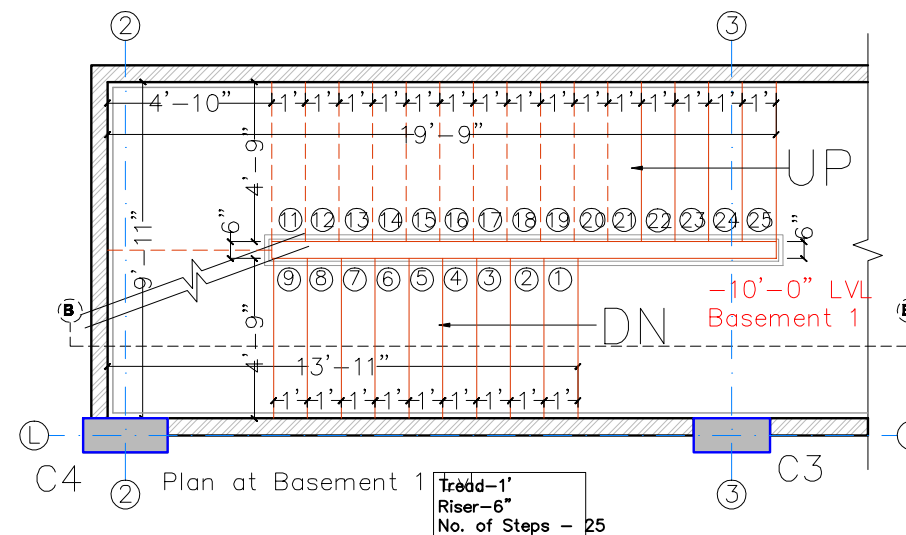
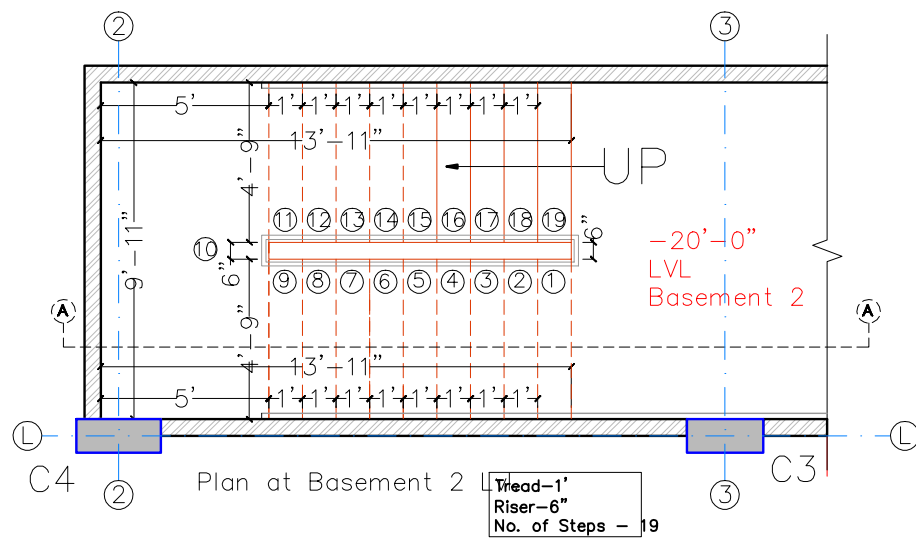
NOTE:



SECTION A-A



1. USE M25 (1:1.5:2) GRADE CONCRETE FOR BEAMS & SLAB
2. USE FE500 GRADE TOR STEEL
3. PROVIDE CLEAR COVER OF 1.5" FOR COLUMNS, 1" FOR BEAMS & 3/4" FOR SLAB
4. PROVIDE 1" CAMBER AT FREE END FOR CANTILEVER BEAMS & SLABS.
5. IN SLAB EXTEND -VE STEEL UPTO 0.30L FROM FACE OF SUPPORT.
6. DO NOT PROVIDE EXTRA REINFORCEMENT AT SIMPLY SUPPORTS.
7. LAP LENGTH 48 D ( D- IS THE DIA OF THE BAR) IN COMPRESSION.
8. LAP LENGTH 52 D ( D- IS THE DIA OF THE BAR) IN TENSION.
9. ONLY FIGURED DIMENSIONS SHALL BE FOLLOWED.
10. ALL THE DIMENSIONS ARE IN INCHES & FEET.
11. DO NOT SCALE THE DRAWING.
12. REFER ARCHITECT DRAWING FOR CENTER LINE DIMENSIONS.



Client	MODI PROPERTIES & INVESTMENTS PVT.LTD		
Project	MAYFLOWER PLATINUM(A)		
STRUCTURAL CONSULTANT	<b>KULKARNI CONSULTANTS</b> STRUCTURAL ENGINEERS, ARCHITECTS & PROJECT CONSULTANTS #216, KUMERA TOWER'S, MAJRAHA GUDA, HYDERABAD. CONTACT NOS:- 9440332881, 9846434724, 9846434725		
DATE	02-07-2019	MAYFLOWER PLATINUM(A)	
DRAWN BY	SANUSH	TITLE:	STAIRCASE (BS2) R.C.C DETAIL
DESIGN	SANTOSH		
CHECKED	KULKARNI	DWG. NO.	SAN/MP/SD/5
APPROVED		REV. No.	0

**BS2**