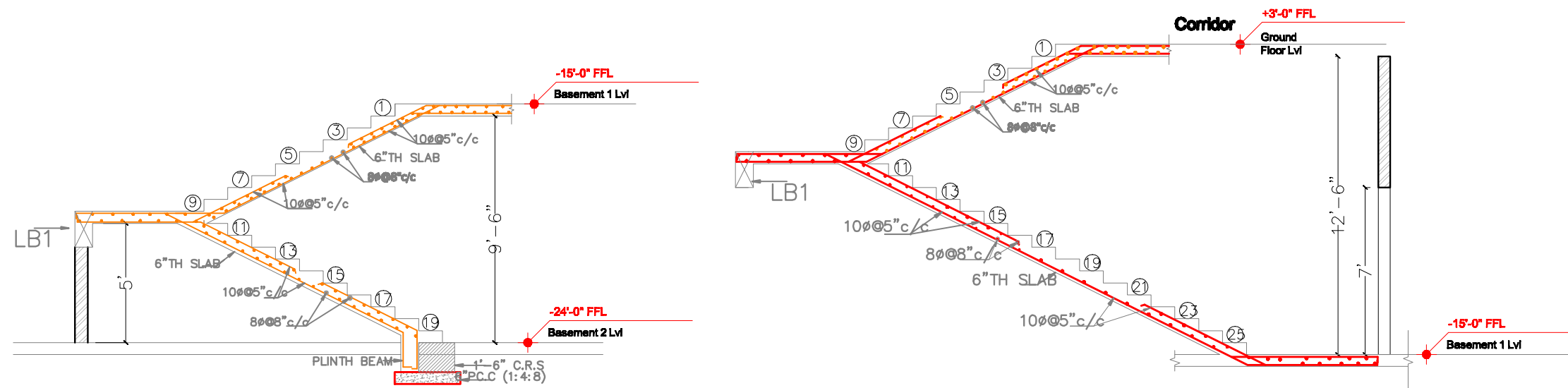


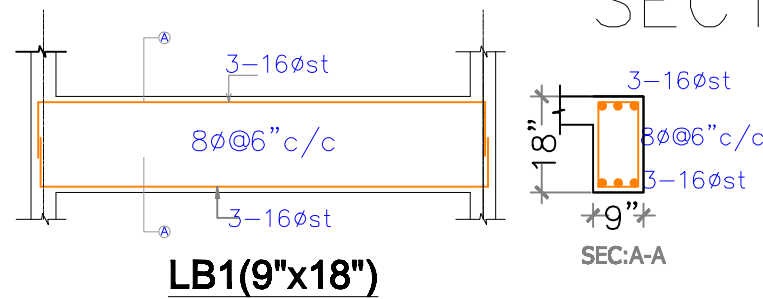
NOTE:

1. USE M25 (1:1.5:2) GRADE CONCRETE FOR BEAMS & SLAB
2. USE FE500 GRADE TOR STEEL.
3. PROVIDE CLEAR COVER OF 1.5" FOR COLUMNS, 1" FOR BEAMS & 3/4" FOR SLAB
4. PROVIDE 1" CAMBER AT FREE END FOR CANTILEVER BEAMS & SLABS.
5. IN SLAB EXTEND -VE STEEL UPTO 0.30L FROM FACE OF SUPPORT.
6. DO NOT PROVIDE EXTRA REINFORCEMENT AT SIMPLY SUPPORTS.
7. LAP LENGTH 48 D (D- IS THE DIA OF THE BAR) IN COMPRESSION.
8. LAP LENGTH 52 D (D- IS THE DIA OF THE BAR) IN TENSION.
9. ONLY FIGURED DIMENSIONS SHALL BE FOLLOWED.
10. ALL THE DIMENSIONS ARE IN INCHES & FEET.
11. DO NOT SCALE THE DRAWING.
12. REFER ARCHITECT DRAWING FOR CENTER LINE DIMENSIONS.



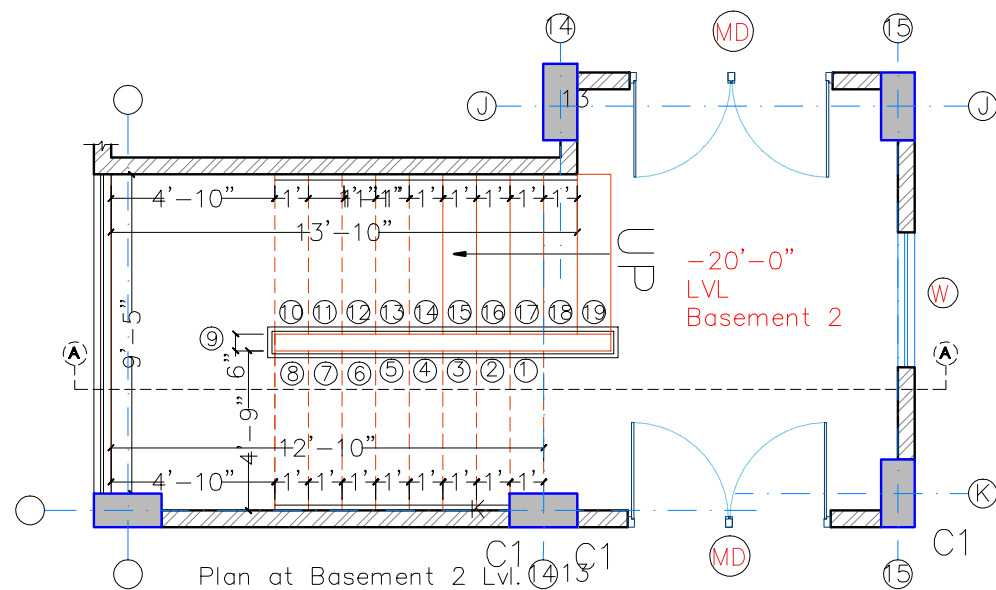
SECTION AA

SECTION AA



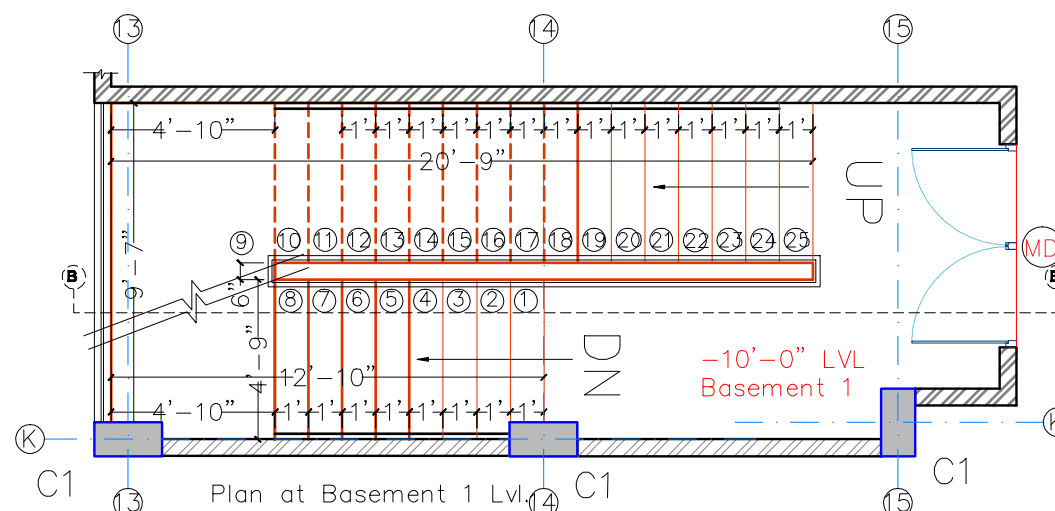
LB1(9"x18")

SEC:A-A



Plan at Basement 2 Lvl.

Tread-1'
Riser-6"
No. of Steps - 19



Plan at Basement 1 Lvl.

Tread-1'
Riser-6"
No. of Steps - 25

BS4

MODI PROPERTIES & INVESTMENTS PVT.LTD	
Client MAYFLOWER PLATINUM(A)	
STRUCTURAL CONSULTANT	KULKARNI CONSULTANTS STRUCTURAL ENGINEERS, ARCHITECTS & PROJECT CONSULTANTS #216, KUMBERA TOWER'S, MAJANAH GUDA HYDERABAD. CONTACT NOS:- 9440332881, 9846437224, 9846434720.
Project	MAYFLOWER PLATINUM(A)
DATE: 02-07-2019	
DRAWN BY: SANISH	
DESIGN: SANTOSH	
CHECKED: KULKARNI	
APPROVED:	
TITLE: STAIRCASE (BS4) R.C.C DETAIL	
DWG. NO. SAN/MP/SD/5	REV. No. 0