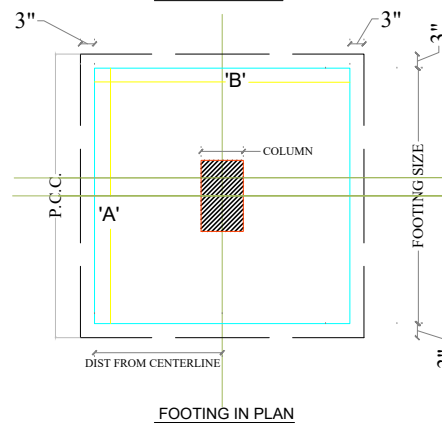
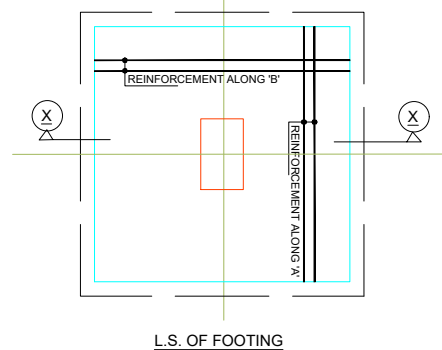
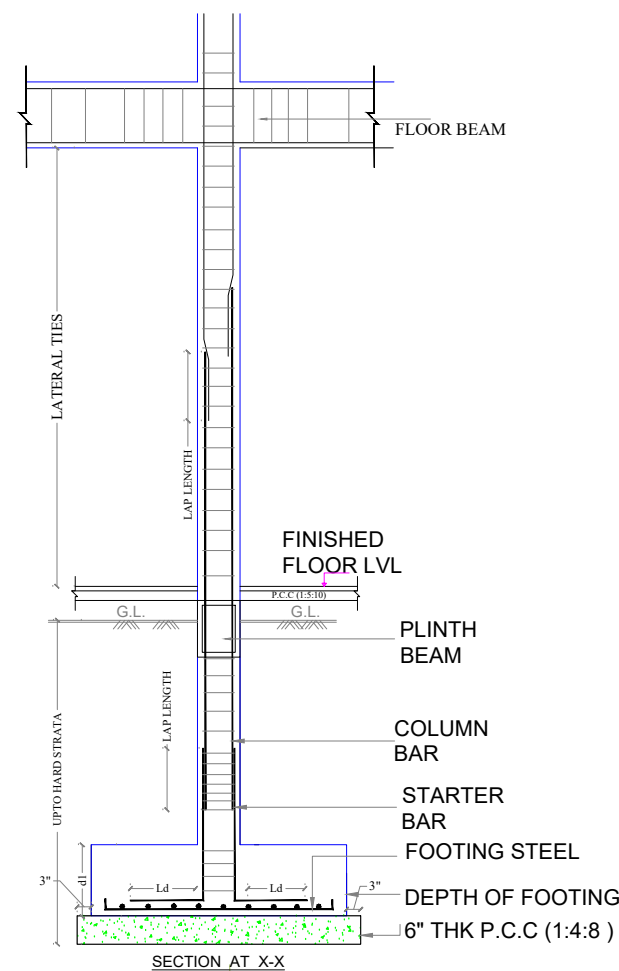


COLUMN SECTION DETAILS					
TYPE/ NOS	CONC. GRADE	SIZE	STEEL	SECTION	LATERAL TIES
C1	M30	9"x15"	8 nos 16Ø		8Ø@8" c/c
C2	M30	9"x18"	6nos20Ø+ 2nos 16Ø		8Ø@8" c/c
C3	M30	9"x24"	6nos20Ø+ 4nos 16Ø		8Ø@8" c/c
C4	M30	18"x18"	6nos25Ø+ 6nos 20Ø		8Ø@8" c/c
C5	M30	12"x24"	6nos25Ø+ 8nos 20Ø		8Ø@8" c/c
C6	M30	12"dia	8nos 12Ø		8Ø@8" c/c

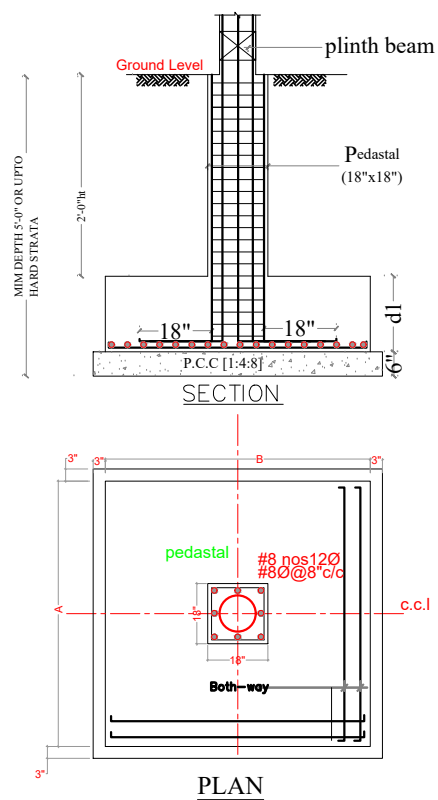
FOOTINGS SECTION DETAILS					
TYPE/ NOS	CONC. GRADE	PIT SIZE	FOOTING SIZE (A X B)	DEPTHS	REINFORCEMENT ALONG A&B
				d1	
F1	M20	5'9"x5'9"	5'3"x5'3"	18"	10Ø@6" c/c BOTH WAYS
F2	M20	7'6"x7'6"	7'0"x7'0"	21"	12Ø@6" c/c BOTH WAYS
F3	M20	9'0"x9'0"	8'6"x8'6"	27"	12Ø@5" c/c BOTH WAYS



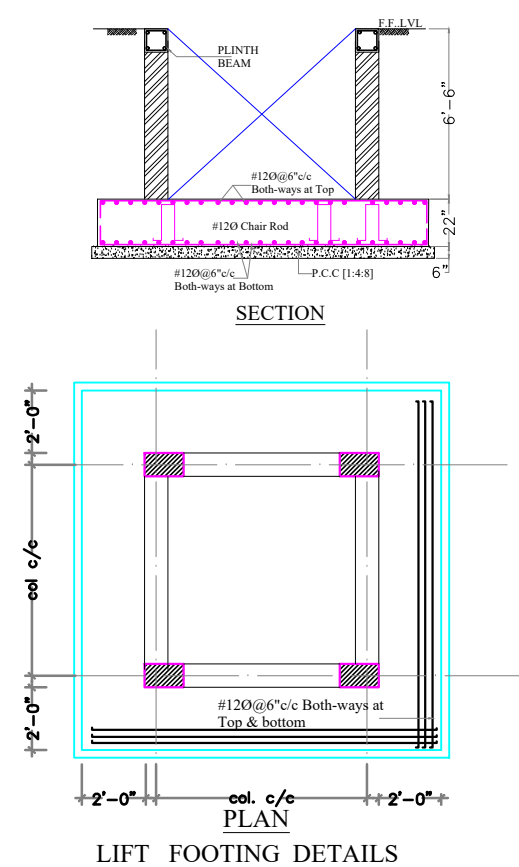
TYPICAL DETAIL OF FOOTING

General Notes : --

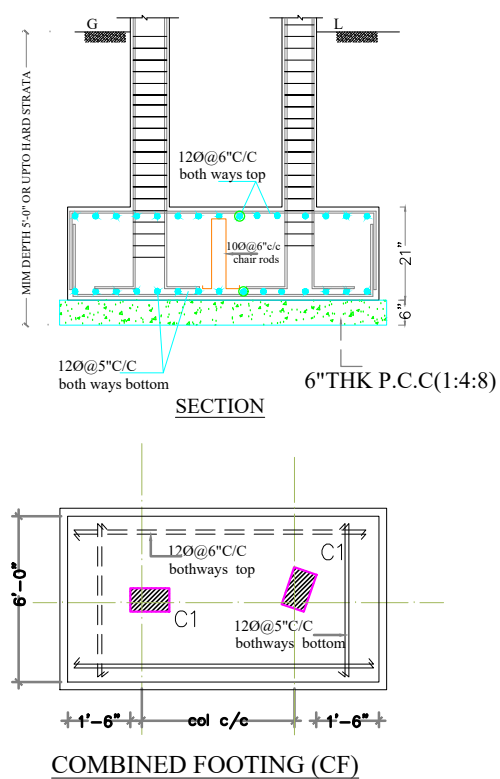
1. Use M25 (1:1:2) grade for columns & M20 (1:1.5:3) for footings, slab & Beams
2. Use FE500 grade tor steel.
3. Provide clear cover of 2" for footings & 1.5" for columns.
4. S.B.C of the Soil is taken as 350kn/m2.
5. Footings are designen for Ground +Upper 4floors.
6. Provide clear cover of 1"for beams
7. Read horizontal beams from left to right & vertical from bottom to left.
8. crank +ve bars at L/4 th of span & extend -ve bars L/5 th of span.
9. Do not over lap bottom rods at center and top rods at support.



CIRCULAR COLUMN FOOTING



LIFT FOOTING DETAILS



COMBINED FOOTING (CF)

Revised proposed columns	23-1-16
DESCRIPTION	DATE

GOOD FOR CONSTRUCTIONS

Client MODI  
PROPERTIES & INVESTMENTS PVT.LTD

Project NILAGIRI ESTATE  
AT RAMPALLY, PHASE - II

STRUCTURAL CONSULTANT  
**KULKARNI CONSULTANT'S**  
STRUCTURAL ENGINEERS, ARCHITECTS & PROJECT CONSULTANT'S  
#216, KUBERA TOWER'S, NARAYAN GUDA, HYDERABAD.  
CONTACT NO'S:- 04023223891, 09246343724, 09246343720.

DATE	23-1-2016	<p>CLUB HOUSE</p> <p>TITLE: COLUMN &amp; FOOTING SECTION DETAILS</p>	<p>DWG. NO. KC/MBC/SD/CH/2</p>	<p>REV. No. 1</p>
DEALT BY	PAWAN			
DESIGN BY	SRIKANTH			
CHECKED & APPROVED	KULKARNI			