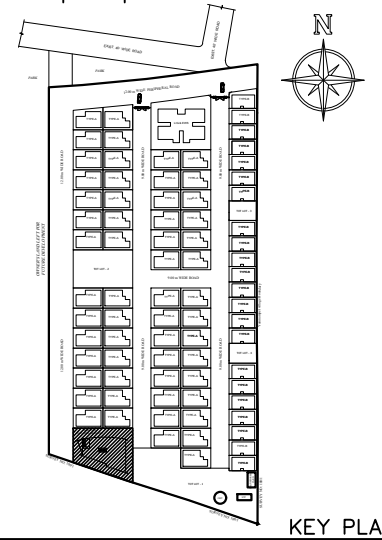
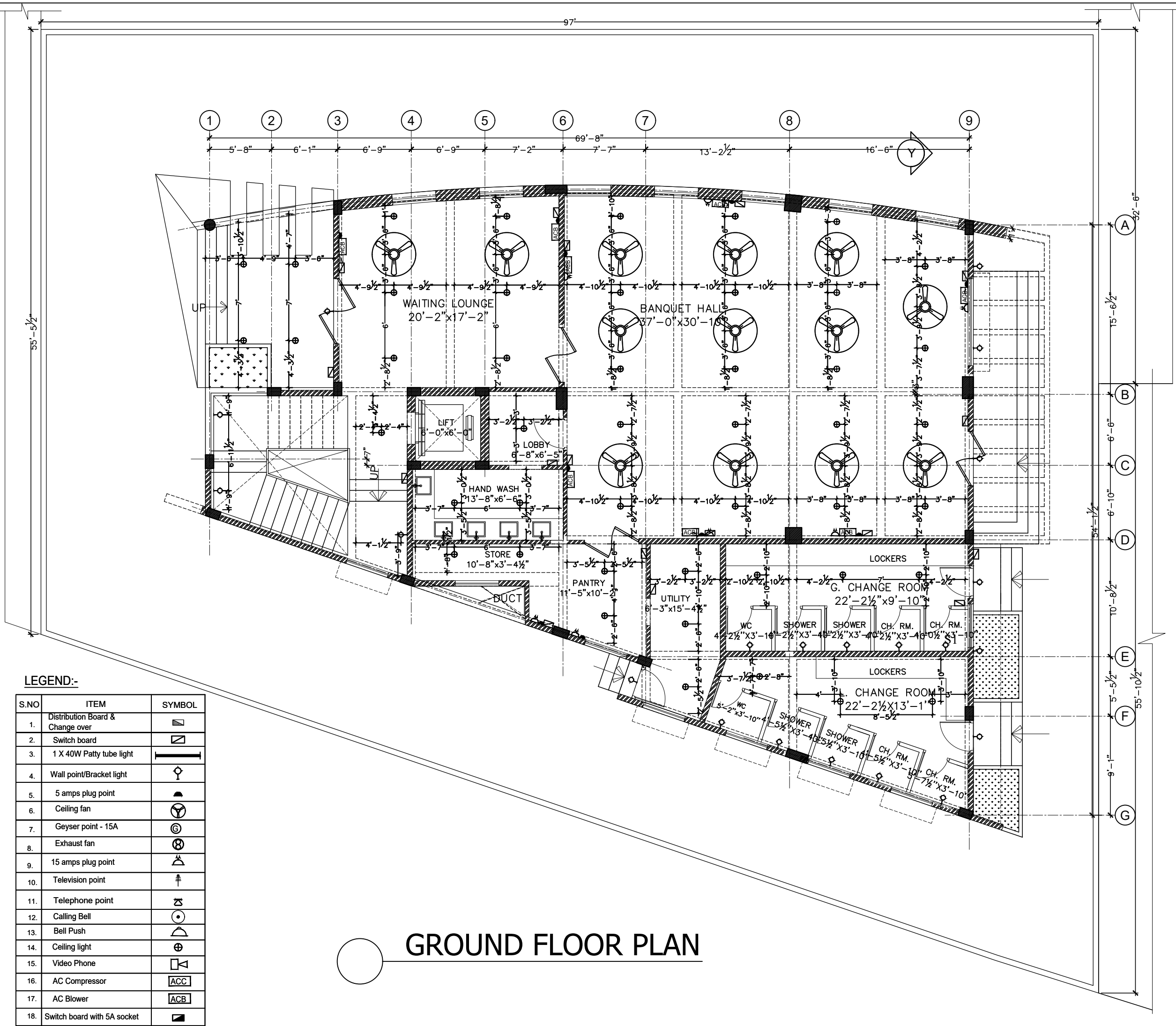


© Copy right of This drawing belongs to Prasad Associates and should not be used for any purpose other than specified without prior permission.



**General Notes:-**

- DO NOT SCALE THE DRAWING, FOLLOW WRITTEN DIMENSIONS ONLY.
- ALL DIMENSIONS ARE IN FEET UNLESS OTHERWISE SPECIFIED.
- ALL THE EXTERNAL WALLS ARE OF 6" thk. AND IN WALLS ARE 4" thk. UNLESS OTHERWISE SPECIFIED.
- COLUMNS SHOWN IN THIS DRAWING ARE TENTATIVE.
- IF THERE IS ANY DISCREPANCY IN THE DRAWINGS, PLEASE NOTIFY THE ARCHITECT IMMEDIATELY. CONCERNED ARCHITECT INCHARGE.



**LEGEND:-**

S.NO	ITEM	SYMBOL
1.	Distribution Board & Change over	
2.	Switch board	
3.	1 X 40W Paddy tube light	
4.	Wall point/Bracket light	
5.	5 amps plug point	
6.	Ceiling fan	
7.	Geyser point - 15A	
8.	Exhaust fan	
9.	15 amps plug point	
10.	Television point	
11.	Telephone point	
12.	Calling Bell	
13.	Bell Push	
14.	Ceiling light	
15.	Video Phone	
16.	AC Compressor	
17.	AC Blower	
18.	Switch board with 5A socket	

**GROUND FLOOR PLAN**

Rev.	Description	Drawn By	Date
FOR APPROVAL			
Client	MODI PROPERTIES & INVESTMENTS PVT.LTD		
Project	NILAGIRI ESTATE AT RAMPALLY, PHASE - II		
Title	CLUB HOUSE - GROUND FLOOR ELECTRICAL LAYOUT.		
Drawn	SHILPA	Scale	NTS
Checkd.	KIRAN	Date	12 MAY 16
Apprd.			
Consultant			
PRASAD ASSOCIATES ANCLARY OF CITY BUILDERS #104, 1ST FLOOR, GBS ENCLAVE, TRUMALAGIRI MAIN ROAD, SECUNDERABAD - 500 015.			C H
Dwg.No	PA/NE/CLUB/ELEC/01	Rev.	00