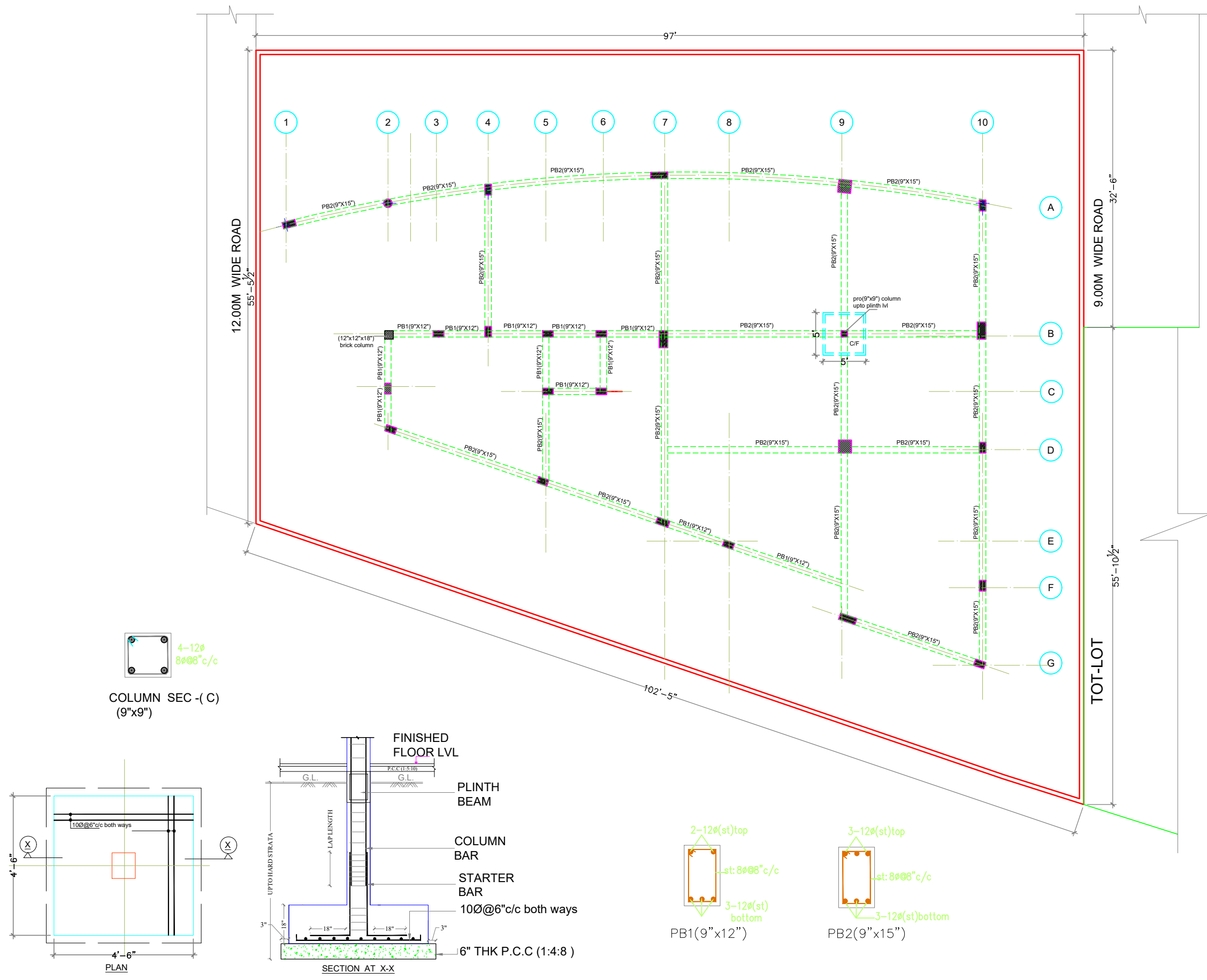


General Notes : --

1. Use M25 (1:1:2) grade for columns & M20 (1:1.5:3) for footings, slab & Beams
2. Use FE500 grade tor steel.
3. Provide clear cover of 2" for footings & 1.5" for columns.
4. S.B.C of the Soil is taken as 350kn/m2.
5. Footings are design for Ground +Upper 4floors.
6. Provide clear cover of 1"for beams
7. Read horizontal beams from left to right & vertical from bottom to left.
8. crank +ve bars at L/4 th of span & extend -ve bars L/5 th of span.
9. Do not over lap bottom rods at center and top rods at support.



Client	MODI PROPERTIES & INVESTMENTS PVT.LTD		
Project	NILAGIRI ESTATE AT RAMPALLY, PHASE - II		
STRUCTURAL CONSULTANT	KULKARNI CONSULTANTS STRUCTURAL ENGINEERS, ARCHITECTS & PROJECT CONSULTANT'S #216, KUBERA TOWER'S, NARAYAN GUDA, HYDERABAD. CONTACT NO'S:- 04023223891, 09246343724, 09246343720.		
DATE	24-2-2016	CLUB HOUSE	
DEALT BY	PAWAN	TITLE:	PLINTH BEAM DETAILS
DESIGN BY	SRIKANTH		
CHECKED & APPROVED:	KULKARNI	DWG. NO.	KC/MBC/SD/CH/3
		REV. No.	1