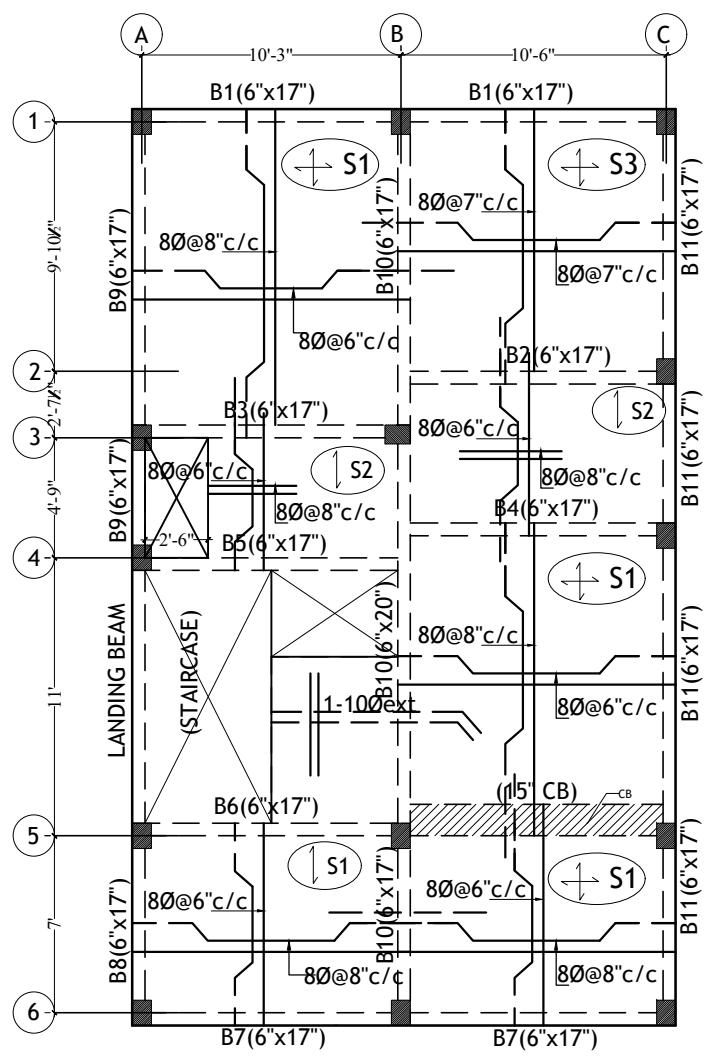
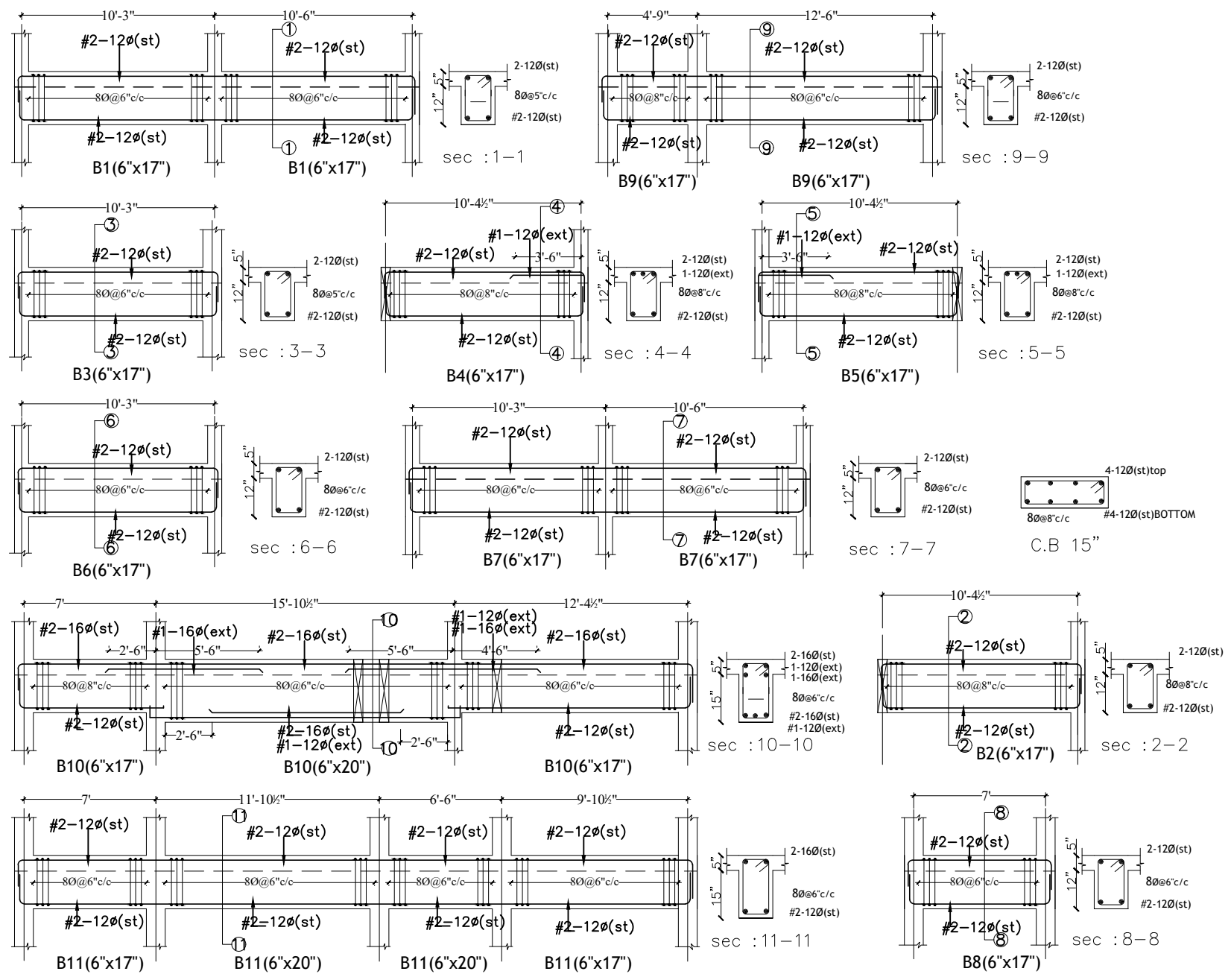


PRODUCED BY AN AUTODESK STUDENT VERSION

PRODUCED BY AN AUTODESK STUDENT VERSION



SCHEDULE OF SLABS				
SLAB MARK	THICKNESS	TYPE	REINFORCEMENT STEEL AT	
			SHORT SPAN	LONG SPAN
S1	5"	+	8Ø @ 6" C/C	8Ø @ 8" C/C
S2	5"	-	8Ø @ 6" C/C	8Ø @ 8" C/C
S3	5"	+	8Ø @ 7" C/C	8Ø @ 7" C/C



- General Notes : --
1. Use M25 (1:1:2) grade for columns & M20 (1:1.5:3) for footings, slab & Beams
  2. Use FE 500 grade tor steel.
  3. Provide clear cover of 2" for footings & 1.5" for columns.
  4. S.B.C of the Soil is taken as 250kn/m2.
  5. Footings are design for Ground & Upeer 2 floor.
  6. Provide clear cover of 1" for beams
  7. Read horizontal beams from left to right & vertical from bottom to left.
  8. crank +ve bars at L/4 th of span & extend -ve bars L/5 th of span.
  9. Do not over lap bottom rods at center and top rods at support.
  10. Slab thickness

DESCRIPTION	DATE
GOOD FOR CONSTRUCTIONS	



Client	MODI PROPERTIES & INVESTMENTS PVT.LTD
Project	NILAGIRI ESTATE PHASE - II
STRUCTURAL CONSULTANT	<b>KULKARNI CONSULTANT'S</b> STRUCTURAL ENGINEERS, ARCHITECTS & PROJECT CONSULTANTS' #216, KUBERA TOWER'S, NARAYAN GUDA, HYDERABAD. CONTACT NO'S:- 04023223891, 09246343724, 09246343720.

DATE	6-3-2017	TYPE	BB1 (SINGLE)
DEALT BY	PAWAN	TITLE	GROUND FLOOR SLAB DETAILS
DESIGN BY	SRIKANTH	DWG. NO.	KC/SD/NS2/13
CHECKED & APPROVED	KULKARNI	REV. No.	1