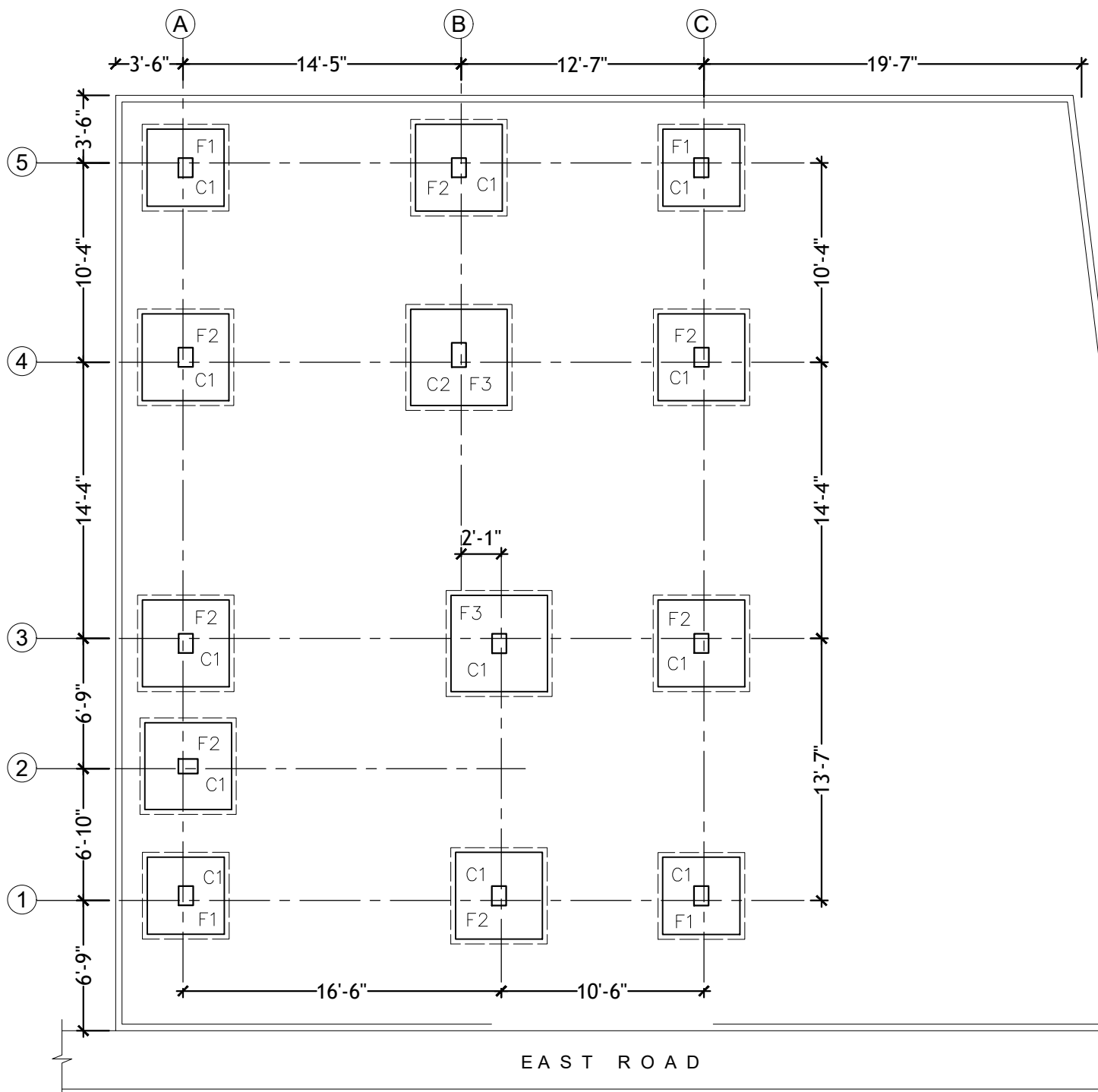


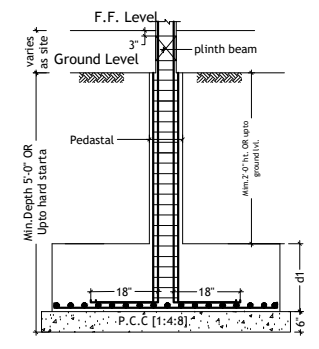
PRODUCED BY AN AUTODESK STUDENT VERSION

PRODUCED BY AN AUTODESK STUDENT VERSION

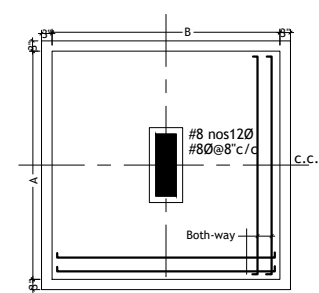


COLUMN DETAIL'S					FOOTING DETAIL'S				
Type	Mix	Size	Section	Reinforcement	Type	A	B	d1	Reinforcement
C1	M 25	9"X12"		#6No-12Ø #8Ø@8"c/c	F1	4'-0"	4'-0"	12"	#10Ø@6"c/c
					F2	4'-6"	4'-6"	12"	#10Ø@6"c/c
C2	M 25	9"X15"		#8No-12Ø #8Ø@8"c/c	F3	5'-0"	5'-0"	15"	#10Ø@5"c/c

- General Notes : --
- Use M25 (1:1:2) grade for columns & M20 (1:1.5:3) for footings, slab & Beams
 - Use FE415 grade tor steel.
 - Provide clear cover of 2" for footings & 1.5" for columns.
 - S.B.C of the Soil is taken as 350kn/m2.
 - Footings are designen for Ground & 1st floor.
 - Provide clear cover of 1"for beams
 - Read horizontal beams from left to right & vertical from bottom to left.
 - crank +ve bars at L/4 th of span & extend -ve bars L/5 th of span.
 - Do not over lap bottom rods at center and top rods at support.
 - Slab thickness



SECTION



PLAN
FOOTING DETAILS

DESCRIPTION	DATE



Client	MODI PROPERTIES & INVESTMENTS PVT.LTD		
Project	NILAGIRI ESTATE AT RAMPALLY, PHASE - II		
STRUCTURAL CONSULTANT	KULKARNI CONSULTANT'S STRUCTURAL ENGINEERS, ARCHITECTS & PROJECT CONSULTANT'S #216, KUBERA TOWER'S, NARAYAN GUDA, HYDERABAD. CONTACT NO'S:- 04023223891, 09246343724, 09246343720.		
DATE	22-5-2017	TYPE - (A1 - SINGLE), EAST FACING (80C)	
DEALT BY	PAWAN	TITLE:	COLUMN & FOOTING DETAILS
DESIGN BY	SRIKANTH		
CHECKED & APPROVED:	KULKARNI	DWG. NO.	KC/RP/SD/1
		REV. No.	1