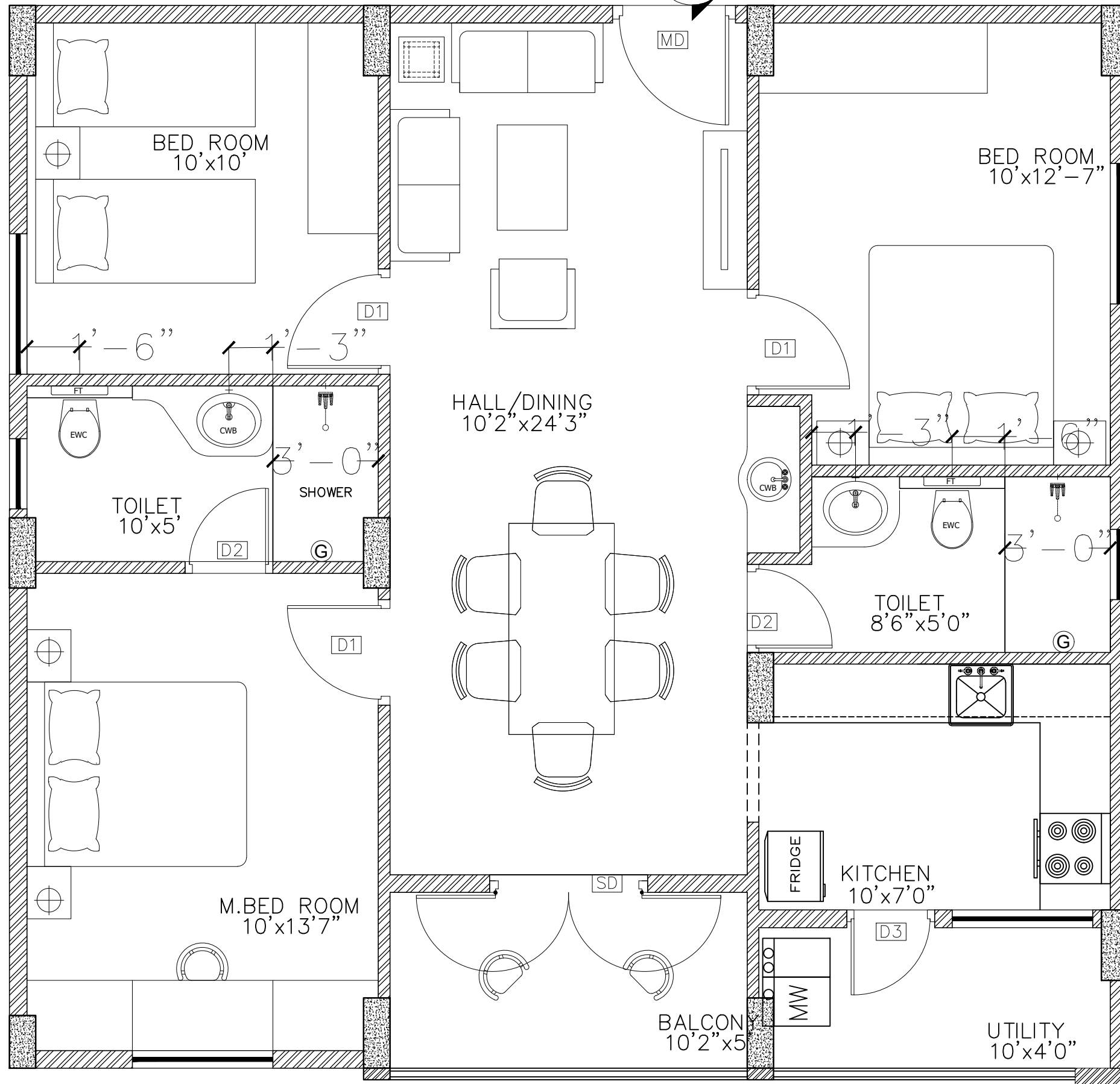
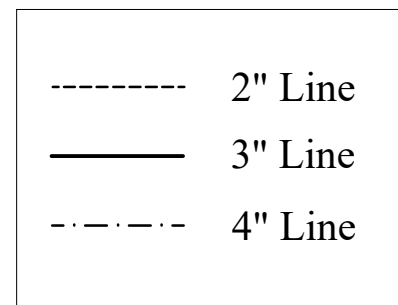


Flat No
13



NOTES:

1. Provide tile drop at shower of 3/4".
2. Raise W M/C platform by 2".
3. Provide tile drop of 3/4" at pot wash.
4. Use 2" pvc pipe for waste pipes of sinks / basins with bottle trap.
5. Use wall mounted wc's and half pedestal wash basins.
6. Follow circular.No.506(1) dated.19.08.11 for specs.
7. Do not use Nani trap for kitchen and dining.



Description PLUMBING PLAN OF TYPE - C	Direction N 	Owners & Developers :	Date :	08.04.17	Promoted by Modi Properties & Investments Pvt. Ltd. Phone:+91-40-66335551
		Modi Properties & Investment Pvt Ltd.	Prepared By :	M.Nagalaxmi	
		Project Name & Phase :	Approved By :	Soham Modi	
		Paramount Avenue	Scale :	N.T.S	