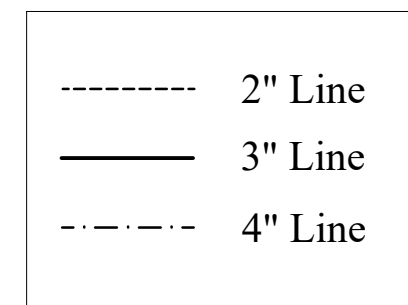
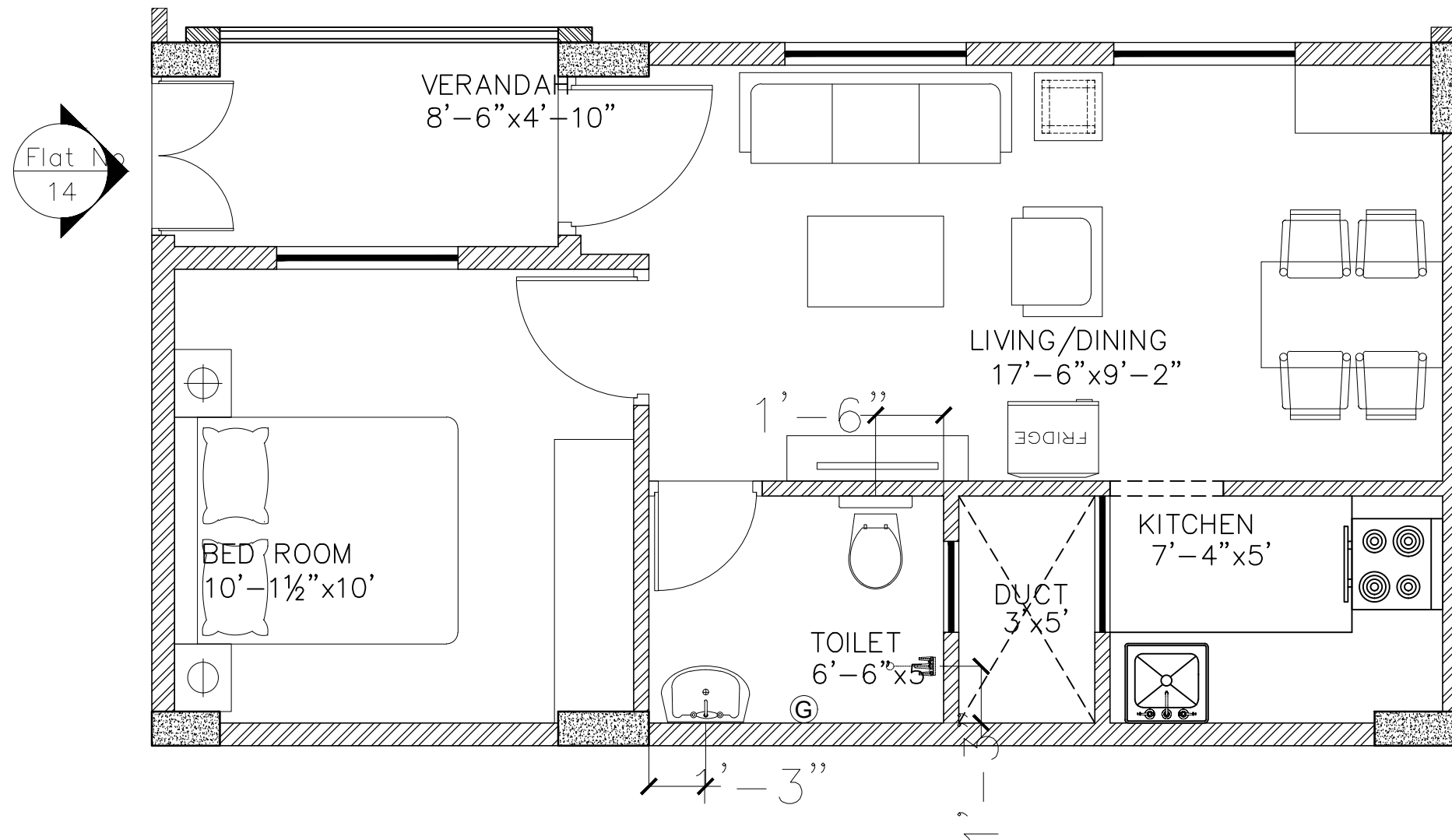



NOTES:

1. Provide tile drop at shower of 3/4".
2. Raise W M/C platform by 2".
3. Provide tile drop of 3/4" at pot wash.
4. Use 2" pvc pipe for waste pipes of sinks / basins with bottle trap.
5. Use wall mounted wc's and half pedestal wash basins.
6. Follow circular.No.506(l) dated.19.08.11 for specs.
7. Do not use Nani trap for kitchen and dining.



| | | | | | |
|---------------------------|---|---------------------------------------|---------------|-------------|---|
| Description | Direction | Owners & Developers : | Date : | 08.04.17 | Promoted by |
| PLUMBING PLAN OF TYPE - D |  | Modi Properties & Investment Pvt Ltd. | Prepared By : | M.Nagalaxmi | Modi Properties & Investments Pvt. Ltd. |
| | | Project Name & Phase : | Approved By : | Soham Modi | |
| | | Paramount Avenue | Scale : | N.T.S | Phone:+91-40-66335551 |