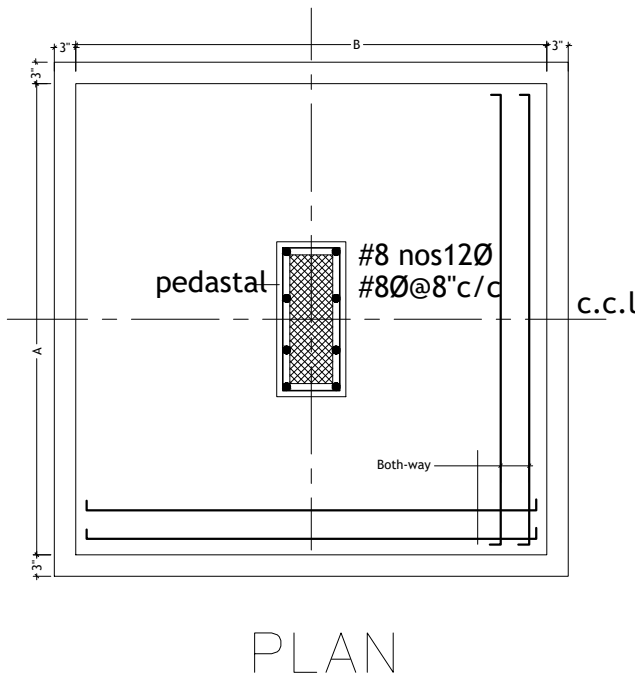
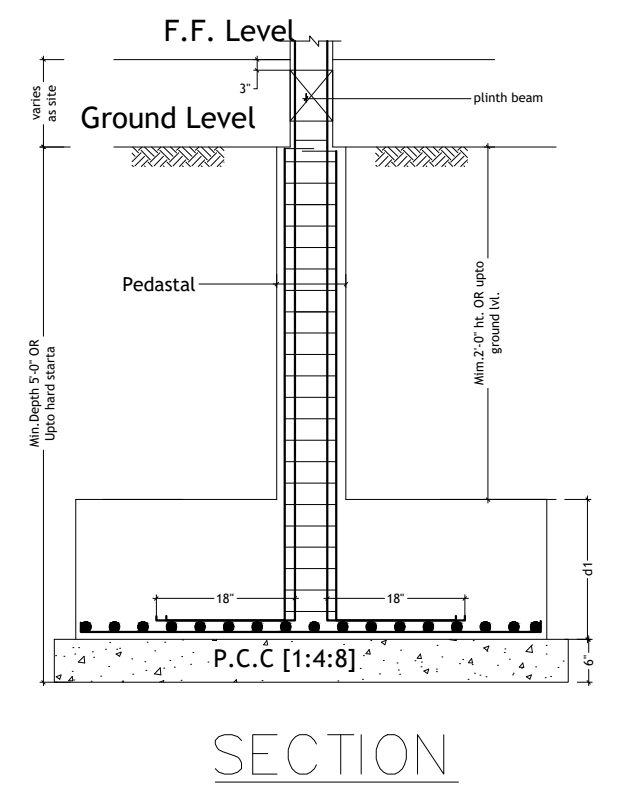
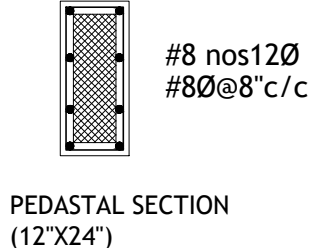


COLUMN DETAIL'S					FOOTING DETAIL'S				
Type	Mix	Size	Section	Reinforcement	Type	A	B	D	Reinforcement
C1	M 25	6"X18"		#6No-16Ø #8Ø@8"c/c	F1	4'-6"	4'-6"	15"	#10Ø@5"c/c
					F2	5'-0"	5'-0"	18"	#10Ø@5"c/c
C2	M 25	6"X18"		#8No-16Ø #8Ø@8"c/c	RF1	4'-0"	5'-0"	18"	#10Ø@5"c/c



- General Notes :--
1. Use M25 (1:1:2) grade for columns & M20 (1:1.5:3) for footings, slab & Beams
 2. Use FE500 grade tor steel.
 3. Provide clear cover of 2" for footings & 1.5" for columns.
 4. S.B.C of the Soil is taken as
 5. Footings are designed for Ground floor.
 6. Provide clear cover of 1" for beams
 7. Read horizontal beams from left to right & vertical from bottom to left.
 8. Crank +ve bars at L/4 th of span & extend -ve bars L/5 th of span.
 9. Do not over lap bottom rods at center and top rods at support.
 10. Slab thickness

DESCRIPTION		DATE
<p>N</p>		
Client	MODI PROPERTIES & INVESTMENTS PVT.LTD	
Project	PROPOSED FARM HOUSE AT YENKAPALLY (alternate plan of villa)	
STRUCTURAL CONSULTANT	<p>KULKARNI CONSULTANT'S STRUCTURAL ENGINEERS, ARCHITECTS & PROJECT CONSULTANT'S #216, KUBERA TOWER'S, NARAYAN GUDA, HYDERABAD. CONTACT NO'S:- 04023223891, 09246343724, 09246343720.</p>	
DATE	26-10-2017	VILLA
DEALT BY	PAWAN	TITLE: COLUMN & FOOTING CENTER LINE PLAN
DESIGN BY	santosh	
CHECKED & APPROVED	KULKARNI	DWG. NO. KC/FH/SD/2
		REV. No. 0