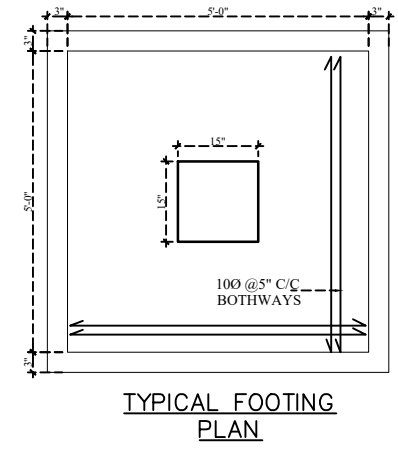
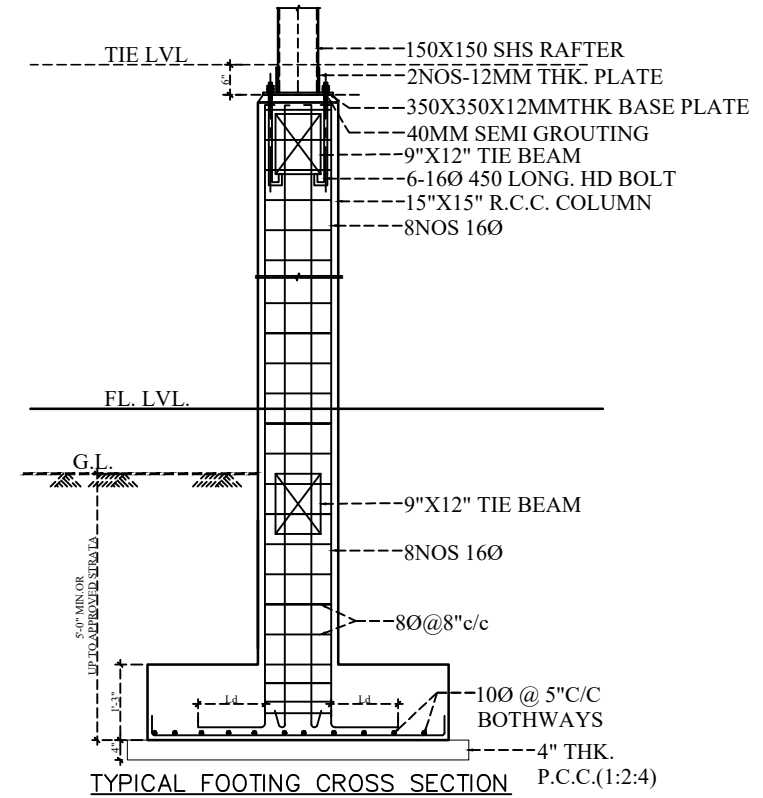
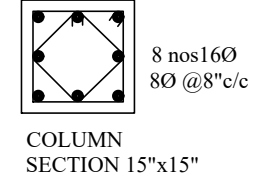
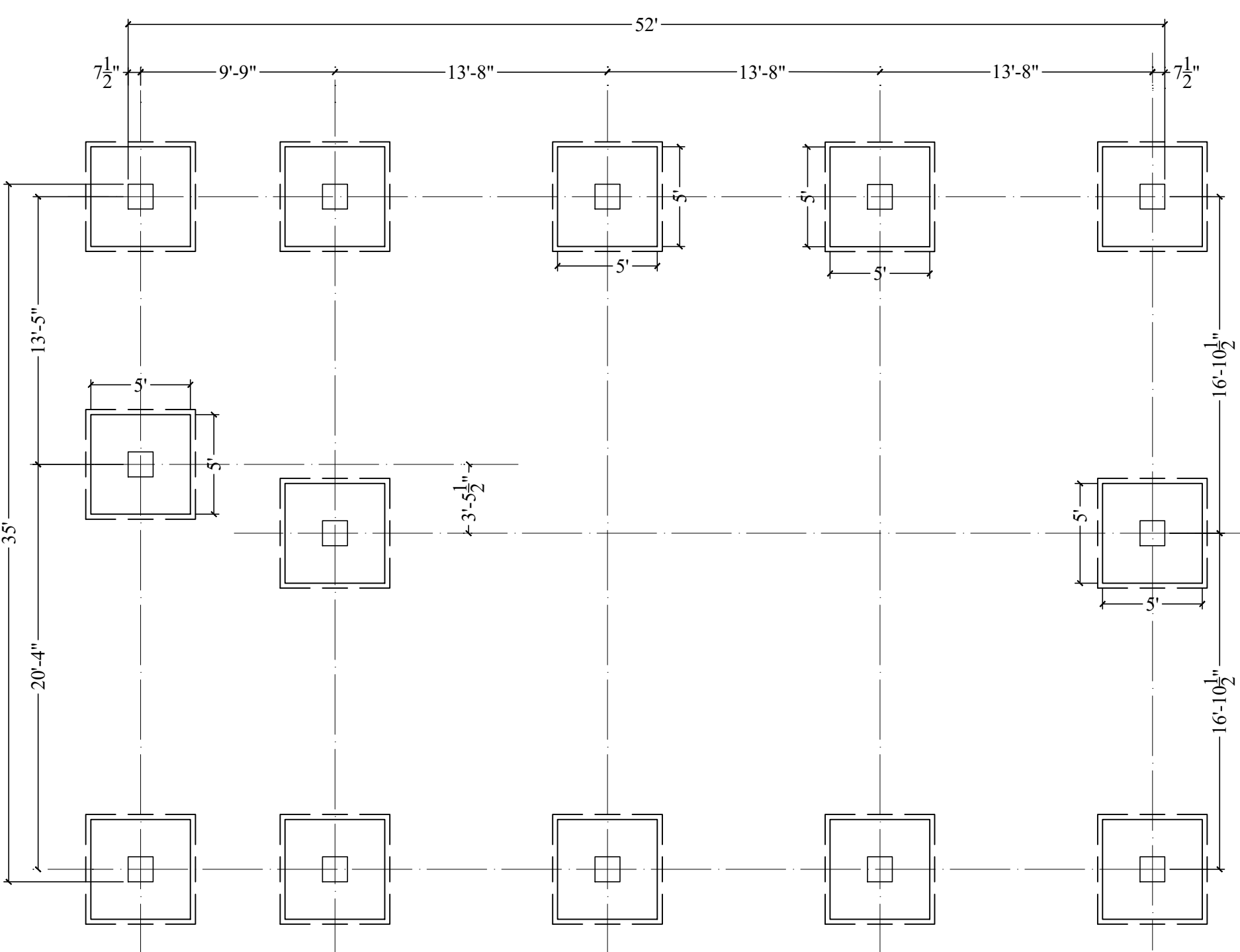


PRODUCED BY AN AUTODESK STUDENT VERSION

PRODUCED BY AN AUTODESK STUDENT VERSION



General Notes : --

1. Use M25 (1:1:2) grade for columns & M20 (1:1.5:3) for footings, slab & Beams
2. Use FE500 grade tor steel.
3. Provide clear cover of 2" for footings & 1.6" for columns.
4. S.B.C of the Soil is taken as 300kn/m2.
5. Footings are designed for Ground floor only.
6. Provide clear cover of 1" for beams
7. Read horizontal beams from left to right & vertical from bottom to left.
8. Crank +ve bars at L/4 th of span & extend -ve bars L/5 th of span.
9. Do not over lap bottom rods at center and top rods at support.

DESCRIPTION	DATE



Client	MODI PROPERTIES & INVESTMENTS PVT.LTD
Project	PROPOSED FARM HOUSE AT YENKAPALLY
STRUCTURAL CONSULTANT	KULKARNI CONSULTANTS STRUCTURAL ENGINEERS, ARCHITECTS & PROJECT CONSULTANTS #216, KUBERA TOWER'S, BHARANGLA, HYDERABAD CONTACT NO'S:- 04023223891, 09246343724, 09246343720.
DATE	28-02-2017
DEALT BY	PAWAN
DESIGN BY	
CHECKED BY	
APPROVED	KULKARNI
BANQUIT HALL (SERENE FARMS)	
TITLE: COLUMN & FOOTINGS DETAILS	
DWG. NO.	KC/FH/SD/1
REV. No.	0