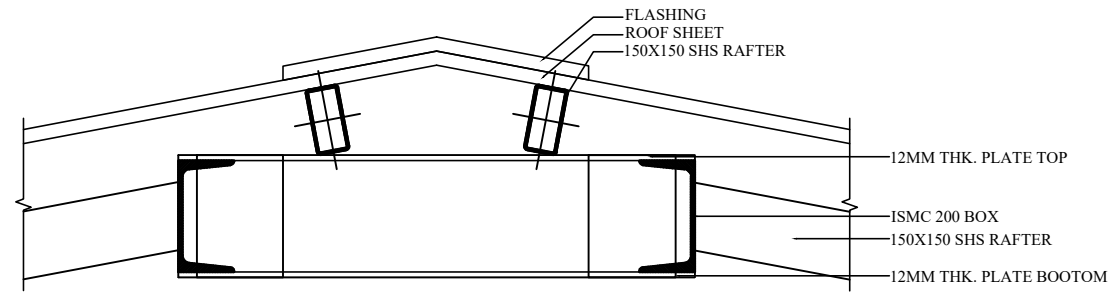
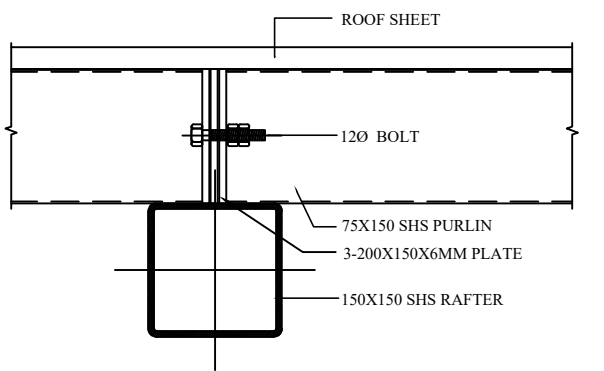


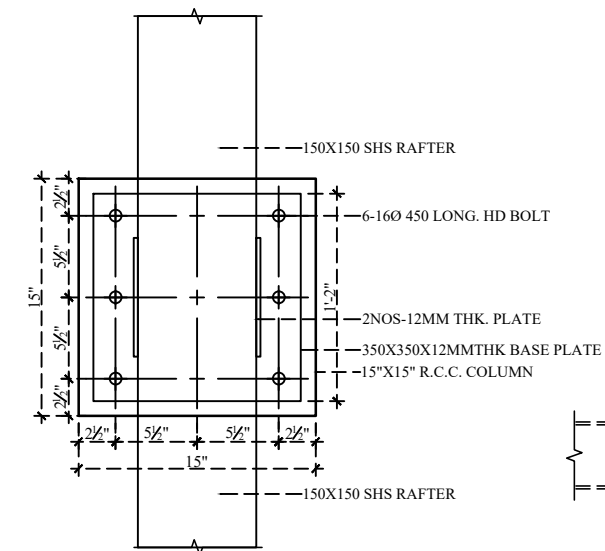
BANQUIT HALL LONG SECTION DETAILS



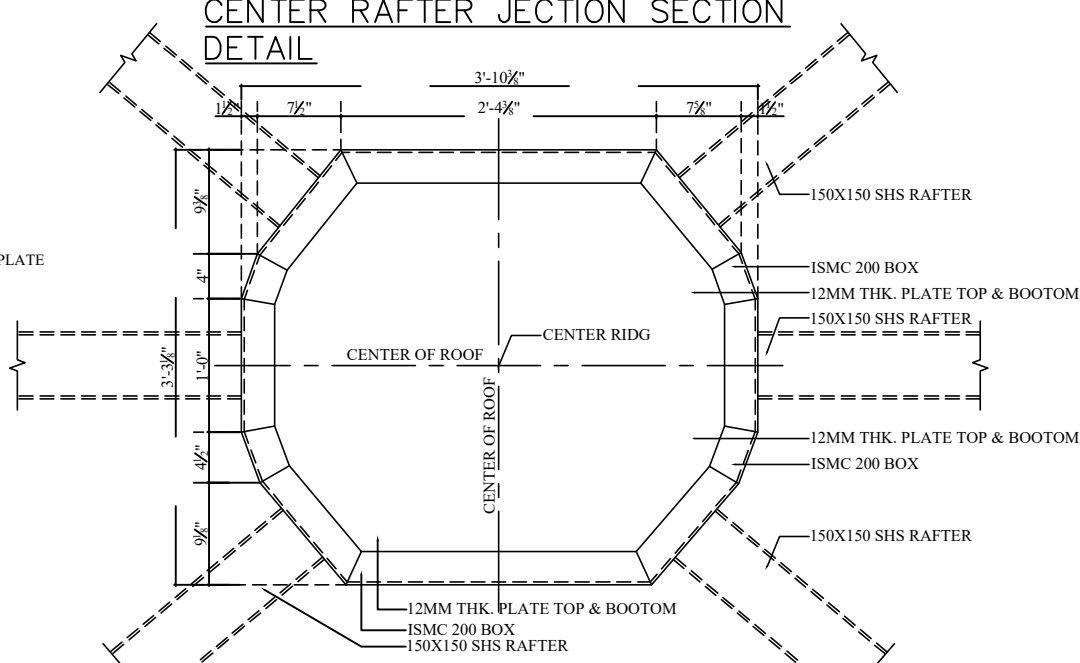
CENTER RAFTER JECTION SECTION DETAIL



PURLIN JECTION SECTION DETAIL



TYPICAL COLUMN TOP DETAILS PLAN



CENTER RAFTER JECTION DETAIL PLAN

General Notes : --	
1. Use M25 (1:1:2) grade for columns & M20 (1:1.5:3) for footings, slab & Beams	
2. Use FE500 grade tor steel.	
3. Provide clear cover of 2" for footings & 1.6" for columns.	
4. S.B.C of the Soil is taken as 300kn/m2.	
5. Footings are designed for Ground floor only.	
6. Provide clear cover of 1" for beams	
7. Read horizontal beams from left to right & vertical from bottom to left.	
8. crank +ve bars at L/4 th of span & extend -ve bars L/5 th of span.	
9. Do not over lap bottom rods at center and top rods at support.	
Note :- Refer architect center line drawing for center line dimensions.	
Client	MODI PROPERTIES & INVESTMENTS PVT.LTD
Project	PROPOSED FARM HOUSE AT YENKAPALLY
STRUCTURAL CONSULTANT	KULKARNI CONSULTANT'S STRUCTURAL ENGINEERS, ARCHITECTS & PROJECT CONSULTANT'S #216, KUBERA TOWER'S, NARAYAN GUDA, HYDERABAD. CONTACT NO'S:- 04023223891, 09246343724, 09246343720.
DATE	28-2-2017
DEALT BY	PAWAN
DESIGN BY	SRIKANTH
CHECKED & APPROVED	KULKARNI
BANQUIT HALL (SERENE FARMS)	
TITLE:	TRUSS SECTION & DETAILS
DWG. NO.	KC/FH/SD/5
REV. No.	0